

# Malham Tarn

## Wildlife & Weather



**2011**

Brian Shorrock

Robin Sutton

**FSC**  
BRINGING  
ENVIRONMENTAL  
UNDERSTANDING TO ALL

Malham Tarn Field Centre  
Settle, North Yorkshire BD24 9PU  
Tel: 01729 830331

  
**THE  
NATIONAL  
TRUST**

## **2011 Wildlife Report – A Summary**

The most notable event of the year was the huge decline in Coot numbers, as far back as sixty years or so the population has never been so low. The causes of the decline are not fully understood at the moment but it will probably be a lack of food in the form of aquatic weed.

The summer weather was not very good but probably marginally better than the last few years, more poor summers in the future will probably cause some extinctions of either butterfly or dragonfly species.

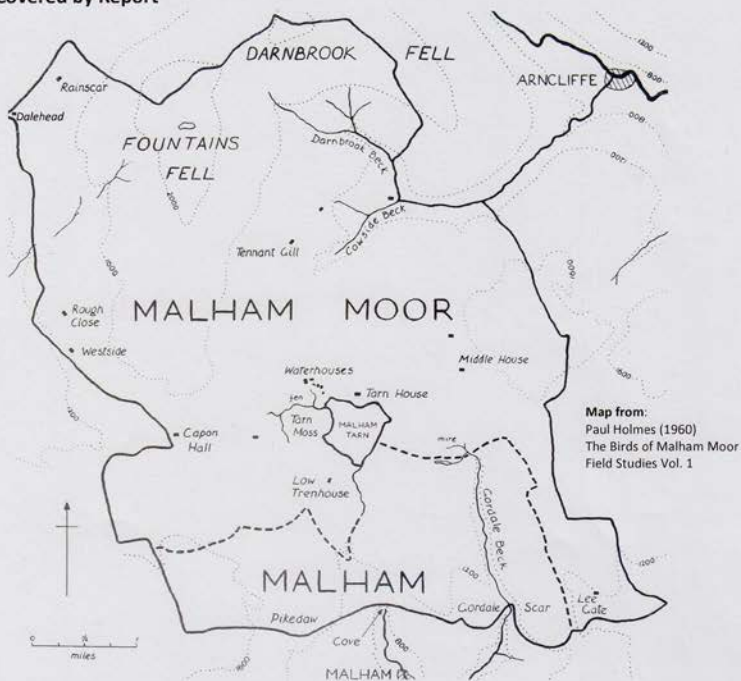
Many changes have taken place since Paul Holmes wrote his "Birds of Malham Moor" in 1960. Some species have declined but these are balanced by increases in others. I have highlighted seven of the more obvious as follows: Decreases – Whinchat, Cuckoo, Twite, Ring Ouzel, Marsh Tit (extinct), Black Grouse (extinct) and Yellow Wagtail. Increases – Canada Goose, Grey-lag Goose, Nuthatch, Great Spotted Woodpecker, Goldfinch, Jackdaw and Chiffchaff. No doubt in the future there will be many more changes.

I would like to thank all the following who contributed in one way or another to this report: Tony Bullough, Roger Clark, Ian Court, Martin Davies, Paul and Elaine Davies, Dave Hodgson, Dr. M. Holmes, Denis Lord, Jo and Gerald Light, Richard Mann, Mr. and Mrs. Keith Mudd, Adrian Pickles, Sarah Priest, Jacqueline Stevens, Stuart Ralph, Colin Straker and Ken White – with apologies for any omissions.

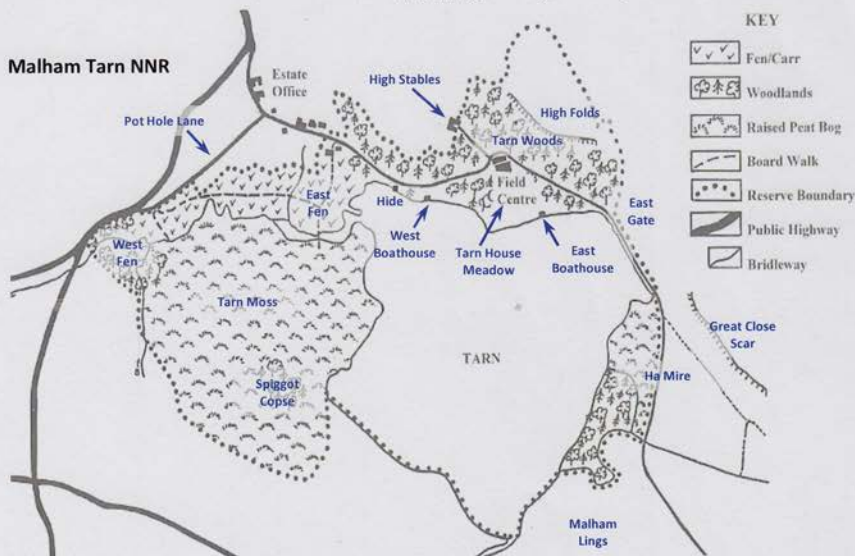
**Brian Shorrock**

January 2012

# Area Covered by Report

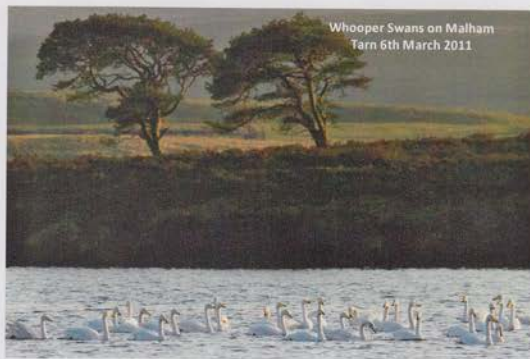


## Malham Tarn NNR



## Bird Records 2011

- Little Grebe** *Tachybaptus ruficollis* No indications that any birds bred or even attempted to do so. Absent from Tarn 21<sup>st</sup> March to 25<sup>th</sup> June, recorded in all other months. Peak count only seven on 1<sup>st</sup> October.
- Great Crested Grebe** *Podiceps cristatus* Present on the Tarn 27<sup>th</sup> February to 1<sup>st</sup> October, no more than eight birds at any time. Two or three pairs attempted to breed, with one pair in East Bay raising one young.
- Cormorant** *Phalacrocorax carbo* Twenty-three records in year, usually single birds, occasionally two. No records in May or June, most in February with five.
- Grey Heron** *Ardea cinerea* First of year was not until 4<sup>th</sup> April, sightings well down on last few years totalling fifteen in all. Single birds were the norm, usually seen on Fen or Tarn Moss.
- Whooper Swan** *Cygnus cygnus* March as usual was the peak time for birds heading for their Icelandic breeding grounds, forty-seven on the 6<sup>th</sup>, fifteen on 7<sup>th</sup>, twenty-one on the 8<sup>th</sup> and twenty on the 11<sup>th</sup>. Only two records in October when two on 13<sup>th</sup> and eight on 21<sup>st</sup>.
- Pink-footed Goose** *Anser brachyrhynchus* The only record was a flock of thirty grazing the South Shore Field from 24<sup>th</sup> to 27<sup>th</sup> March.
- Greylag Goose** *Anser anser*. Up to three birds seen irregularly on or near the Tarn in period March to July, with a single bird on 28<sup>th</sup> October. Still no sign of a breeding attempt.
- Canada Goose** *Branta canadensis* First of year was a single bird on 3<sup>rd</sup> February, increasingly common thereafter. One nest on Tarn Fen was controlled but another pair hatched four young, first seen 8<sup>th</sup> May, from an unknown site. These survived till 19<sup>th</sup> July before they were predated either by a fox or otter. As usual numbers were highest in June and July before falling quickly to year end.



	Jan	Feb	Mar	Apr	May	Jun	Jul	Aug	Sep	Oct	Nov	Dec
2011	0	1	2	2	7	110	200	5	17	11	11	1
2010	0	0	4	8	18	120	200	8	15	19	15	0
2009	0	3	8	14	52	200	210	0	28	28	30	2

- Mallard** *Anas platyrhynchos* Present all year, probably five pairs attempted to breed but only three broods of seven, eight and one seen in June.

	Jan	Feb	Mar	Apr	May	Jun	Jul	Aug	Sep	Oct	Nov	Dec
2011	50	18	14	10	8	40	50	30	10	8	12	12
2010	6	10	12	2	3	50	50	60	115	50	52	10
2009	16	8	8	6	8	16	75	50	50	60	20	20



- 10 **Wigeon** *Anas penelope* Recorded January to 10<sup>th</sup> April and returned later than normal 26<sup>th</sup> September. Usually seen grazing on South Shore Field of Tarn.

	Jan	Feb	Mar	Apr	May	Jun	Jul	Aug	Sep	Oct	Nov	Dec
2011	70	45	50	40	0	0	0	0	6	55	80	70
2010	6	40	75	25	0	0	0	0	10	70	60	1
2009	90	70	70	45	0	0	0	1	2	12	40	45

- 11 **Teal** *Anas crecca* Counts were well down on last few years and again no evidence to suggest breeding.

	Jan	Feb	Mar	Apr	May	Jun	Jul	Aug	Sep	Oct	Nov	Dec
2011	2	4	7	5	0	0	0	0	3	0	8	6
2010	6	8	3	4	0	0	0	1	30	15	6	2
2009	8	18	8	10	0	0	1	8	20	12	4	10

- 12 **Pochard** *Aythya farina* Numbers well down on former years for reasons unknown.

	Jan	Feb	Mar	Apr	May	Jun	Jul	Aug	Sep	Oct	Nov	Dec
2011	4	5	5	0	0	0	3	1	1	2	16	56
2010	0	4	4	0	0	0	1	1	10	40	70	0
2009	50	60	45	1	1	1	4	12	6	10	10	4

- 13 **Tufted Duck** *Aythya fuligula* One species which actually increased unlike most other wildfowl.. For second year running no sign of any breeding attempt.

	Jan	Feb	Mar	Apr	May	Jun	Jul	Aug	Sep	Oct	Nov	Dec
2011	9	60	55	40	8	11	40	35	150	100	75	70
2010	0	4	40	35	28	32	45	60	100	140	160	0
2009	40	60	70	70	22	27	80	50	35	30	20	15

- 14 **Goldeneye** *Bucephala clangula* Recorded on Tarn January to 18<sup>th</sup> April and 21<sup>st</sup> October to year end.

	Jan	Feb	Mar	Apr	May	Jun	Jul	Aug	Sep	Oct	Nov	Dec
2011	5	9	17	4	0	0	0	0	0	1	5	5
2010	2	4	12	18	0	0	0	0	0	6	5	0
2009	21	16	15	8	0	0	0	0	0	1	4	4

- 15 **Goosander** *Mergus merganser* One male on the Tarn 11<sup>th</sup> April was the only record for the year.
- 16 **Red Kite** *Milvus milvus* Now becoming a species which is seen annually albeit still very rare. Two records of single birds near Henside 10<sup>th</sup> August and near Capon Hall 24<sup>th</sup> September.
- 17 **Marsh Harrier** *Circus aeruginosus* A single cream crowned bird high over the Tarn on 24<sup>th</sup> April.
- 18 **Hen Harrier** *Circus cyaneus* Single Ringtails near Waterhouses 16<sup>th</sup> October and near Capon Hall 12<sup>th</sup> November.
- 19 **Buzzard** *Buteo buteo* One pair raised two young at the usual site. Sightings in year slightly up on 2010.

	Jan	Feb	Mar	Apr	May	Jun	Jul	Aug	Sep	Oct	Nov	Dec
2011	2	0	0	2	1	2	0	2	1	0	1	0
2010	0	0	1	2	0	1	0	0	2	0	1	0
2009	1	1	2	3	3	1	0	1	4	1	1	0

- 20 **Sparrowhawk** *Accipiter nisus* No evidence to suggest any breeding attempt. Nine sightings of single birds on 20<sup>th</sup> February, 25<sup>th</sup> March, 4<sup>th</sup> April, 8<sup>th</sup> and 15<sup>th</sup> May, 14<sup>th</sup> and 22<sup>nd</sup> June, 23<sup>rd</sup> September and 10<sup>th</sup> October.

- 21 **Kestrel** *Falco tinnunculus* First of year was not until 1<sup>st</sup> March, probably attempted to breed on Great Close but no signs of any success. Thirty-one sightings in year, usually of single birds, with four on 30<sup>th</sup> August. Most records in October with six.

- 22 **Peregrine Falcon** *Falco peregrinus* Only six sightings, singles, apart from two on 19<sup>th</sup> July which were probably young from the Malham Cove site.

- 23 **Hobby** *Falco subuteo* One with Kestrel, Peregrine and Merlin over Great Close Scar 31<sup>st</sup> July.

A remarkable set of photographs by Ken White showing a Kestrel (top) female Merlin (mid left), immature Peregrine (mid right) and Hobby (lower) that were all in the air together over Great Close Scar on 31<sup>st</sup> July 2011.

- 24 **Merlin** *Falco columbarius* Single birds on 31<sup>st</sup> July, 26<sup>th</sup> September and 20<sup>th</sup> November.

- 25 **Red Grouse** *Lagopus lagopus* The small population on Fountains Fell and nearby Fawcett Moor shows no obvious change in status.

- 26 **Red-legged Partridge** *Alectoris rufa* Now the most likely partridge to be seen on Malham Moor thanks to introductions over the years. Eight confiding birds near Waterhouses in January and February, smaller numbers were seen at Low Trenhouse, Chapel Fell, Henside, Capon Hall and down Pot Hole Lane. Probably attempted to breed but no young seen.

- 27 **Grey Partridge** *Perdix perdix* All records as follows of this now rare species, two 18<sup>th</sup> April Henside. One calling Ha Mire 19<sup>th</sup> July and one Low Trenhouse 24<sup>th</sup> October.

- 28 **Quail** *Coturnix coturnix* Two records of calling birds for day only near Tennant Ghyll 10<sup>th</sup> June and near Tarn Outflow 16<sup>th</sup> June.

- 29 **Common Pheasant** *Phasianus colchicus* Present throughout year on Tarn Estate but numbers still low. Peaks only ten on 11<sup>th</sup> January and 11<sup>th</sup> March. Two broods were seen, female with five young 4<sup>th</sup> July Pot Hole Lane, and female plus six small young near Keeper's Cottage 25<sup>th</sup> July.

- 30 **Moorhen** *Gallinula chloropus* On the verge of extinction in the area with one or two birds based on Tarn Fen where seen or heard infrequently in period 22<sup>nd</sup> March to 16<sup>th</sup> November.

- 31 **Coot** *Fulica atra* The monthly counts fully illustrate the dramatic decline of this species. One or two pairs made some attempts to breed but all failed.

	Jan	Feb	Mar	Apr	May	Jun	Jul	Aug	Sep	Oct	Nov	Dec
2011	9	8	6	3	3	1	2	4	0	2	2	1
2010	10	32	35	25	26	26	45	200	300	150	70	10
2009	150	60	50	40	15	16	18	100	250	300	300	300

- 32 **Oystercatcher** *Haematopus ostralegus* Arrived back on 25<sup>th</sup> February, at least five pairs attempted to breed but no sign of any success though one pair which nested on a wall top of a ruined building down Cowside Beck hatched young and another pair was sat on eggs near Dalehead on 27<sup>th</sup> April. Peak count was eight on 14<sup>th</sup> April near Globeflower Wood. Last seen on 21<sup>st</sup> July.
- 33 **Ringed Plover** *Charadrius hiaticula* Single birds near Tarn Outflow on 13<sup>th</sup> and 17<sup>th</sup> May.
- 34 **Golden Plover** *Pluvialis apricaria* First sightings of the year were single birds at High Trenhouse 8<sup>th</sup> February, Dalehead 1<sup>st</sup> March and near Tarn Fen 21<sup>st</sup> March. The northern race flock was present near Dalehead from at least 12<sup>th</sup> April to 19<sup>th</sup> May, maximum count was twenty plus on 16<sup>th</sup> April. One pair seen with young on Fountains Fell in July. No autumn records.
- 35 **Lapwing** *Vanellus vanellus* Recorded in every month of year, peak counts were both on South Shore of Tarn Field with c.100 on 1<sup>st</sup> March and c.70 21<sup>st</sup> November. Two or three pairs attempted to breed on Malham Lings – a most unfortunate place to nest as it is overrun by tourists. A few pairs also bred near Dalehead.
- 36 **Dunlin** *Calidris alpina* A very poor showing, just single birds near Tarn Outflow on 19<sup>th</sup> May and 10<sup>th</sup> June.
- 37 **Common Sandpiper** *Actitis hypoleucos* Now absent as a breeding bird with only three sightings of single birds on Tarn shoreline, all in May, on 6<sup>th</sup>, 12<sup>th</sup> and 16<sup>th</sup>.
- 38 **Redshank** *Tringa totanus* Arrived back 13<sup>th</sup> March, possibly two pairs only, on Malham Lings and Great Close Pools. No sign of any success with no more than three birds at any time. Last seen 3<sup>rd</sup> July.
- 39 **Greenshank** *Tringa nebularia* One near Tarn 10<sup>th</sup> June the only record.
- 40 **Curlew** *Numenius arquata* Recorded in the area from 12<sup>th</sup> February to 15<sup>th</sup> September. Peak counts of Tarn Moss flocks were seventy-five 4<sup>th</sup> April, one-hundred 16<sup>th</sup> June and one-hundred and fifty 27<sup>th</sup> June. Bred at many sites in recording area.
- 41 **Whimbrel** *Numenius phaeopus* Single birds near Tarn on 10<sup>th</sup> and 24<sup>th</sup> May.
- 42 **Woodcock** *Scolopax rusticola* Another poor showing, only five records of single birds in whole year, on 8<sup>th</sup> January Fen, 15<sup>th</sup> November High Stables, 21<sup>st</sup> November Tarn Moss, 11<sup>th</sup> December West Fen and 29<sup>th</sup> December below Sandhill Cottage.
- 43 **Jack Snipe** *Lymnocyrtus minima* Just a single bird on Tarn Moss on the early date of 27<sup>th</sup> September.
- 44 **Snipe** *Gallinago gallinago* A very poor year, with one sighting on 2<sup>nd</sup> January and no more until one was heard calling in Outflow area with a drumming bird in May - normally there are at least three drumming birds here. Present also on Ha Mire and Tarn Moss where presumably bred. One seen on Street gate 3<sup>rd</sup> July would also relate to a breeding bird.
- 45 **Turnstone** *Arenaria interpres* One in breeding plumage on Tarn shoreline near Outflow on 5<sup>th</sup> May.
- 46 **Black-headed Gull** *Larus ridibundus* No obvious change in status, only absent from area in a prolonged cold spell. A count of forty 30<sup>th</sup> August is only a fraction of the numbers at the uncounted South Shore roost.
- 47 **Common Gull** *Larus canus* Present in large numbers January to 14<sup>th</sup> April and late July to year end. Peak count of one hundred 24<sup>th</sup> October, like former species many more at the South Shore roost.



Redshank

- 48 **Herring Gull** *Larus argentatus* One 19<sup>th</sup> March the only record. Whilst distinctly uncommon there surely must be more in the Tarn roost.
- 49 **Lesser Black-backed Gull** *Larus fuscus* Present in area from at least 11<sup>th</sup> March to 12<sup>th</sup> November. More notable flocks were thirty-seven near Darnbrook 8<sup>th</sup> April, forty Great Close Pools 5<sup>th</sup> May and fifty-two near Tarn 30<sup>th</sup> August.
- 50 **Great Black-backed Gull** *Larus marinus* In early part of year seven on 6<sup>th</sup> January, five on 8<sup>th</sup> January and one 8<sup>th</sup> March, no more records till year end when single birds 16<sup>th</sup> and 20<sup>th</sup> November, 2<sup>nd</sup> and 20<sup>th</sup> December.
- 51 **Common Tern** *Sterna hirundo* One over the Tarn for only a few hours on 10<sup>th</sup> July was the only record.
- 52 **Feral Pigeon** *Columba livia* The only birds were as usual in the Thoragill/Darnbrook area with no more than six birds at any time.
- 53 **Stock Pigeon** *Columba oenas* Four records in year, single birds near Silverdale 3<sup>rd</sup> February and Dalehead 2<sup>nd</sup> April, two over Tarn 1<sup>st</sup> June and two Westside House 20<sup>th</sup> November.
- 54 **Wood Pigeon** *Columba palumbus* One in song Waterhouses 20<sup>th</sup> January was first of year. At least six pairs on Tarn estate 16<sup>th</sup> March. Peak count was sixteen 13<sup>th</sup> September. With a beech mast crop failure no birds were seen after 27<sup>th</sup> September.
- 55 **Collared Dove** *Streptopelia decaocta* Just one record of this Tarn rarity, a single bird in song at Waterhouses for the day only on 12<sup>th</sup> November.
- Cuckoo** *Cuculus canorus* No records at all this year; a sad commentary on the decline of this iconic summer visitor.
- 56 **Tawny Owl** *Strix aluco* At least three pairs in Tarn Woods, three or four calling in March. Juveniles were later seen near High Stables so at least one pair was successful in raising young. These were probably the first young raised at the Tarn since 2007.
- 57 **Long-eared Owl** *Asio otus* Only one record of this elusive species, a bird calling near Keeper's Cottage 20:00hrs on 19<sup>th</sup> March.
- 58 **Short-eared Owl** *Asio flammeus* With no records last year and only two this the species is at a very low ebb. Single birds near Globe Flower Wood 10<sup>th</sup> June and near Dalehead 28<sup>th</sup> October.
- 59 **Swift** *Apus apus* Much lower numbers than normal over the Tarn in period 12<sup>th</sup> May to 27<sup>th</sup> July. Peak count only ten on 16<sup>th</sup> June.
- 60 **Kingfisher** *Alcedo atthis* One bird 18<sup>th</sup> January was probably a bird which arrived in autumn 2010. No more records till 25<sup>th</sup> July when one was seen irregularly to year end with two on 21<sup>st</sup> October.
- 61 **Green Woodpecker** *Picus viridis* One which arrived autumn 2010 wintered through and was last seen on 21<sup>st</sup> March. The only other record was a single bird calling in Tarn Woods on 25<sup>th</sup> July for the day only.
- 62 **Great Spotted Woodpecker** *Dendrocopos major* Up to three birds were drumming in Tarn Woods in January, two pairs probably bred – one near Sandhill Cottage and one near Tarn House. Two juveniles were seen on 13<sup>th</sup> July so at least one pair was successful.
- 63 **Sky Lark** *Aldaia arvensis* First sightings of the year were single birds near Dalehead 8<sup>th</sup> February and near Great Close Scar 26<sup>th</sup> February. Bred



Great Spotted Woodpecker



Malham Lings, Tarn Moss, Chapel Fell, Street Gate and Fountains Fell etc. last record was on 15<sup>th</sup> September.

- 64 **Sand Martin** *Riparia riparia* First of the year were three over the Tarn on evening of 25<sup>th</sup> March, at least six to eight pairs bred in Tarn Moss peat Bank, flocks of forty 16<sup>th</sup> April and one hundred the day after feeding over the Tarn would relate to passage birds. The last record was of two birds on 8<sup>th</sup> August over the Tarn.
- 65 **Swallow** *Hirundo rustica* One at Waterhouses 6<sup>th</sup> April was first sighting in year, bred at Rainscar, Darnbrook, Low Trenhouse, Waterhouses and Capon Hall at least. Peak count was fifty on 30<sup>th</sup> August near Pot Hole Lane, last record 30<sup>th</sup> September.
- 66 **House Martin** *Delichon urbica* First of year was on 17<sup>th</sup> April with no more till 1<sup>st</sup> May. Only one pair noted at Low Trenhouse and three at Waterhouses, a very poor year, peak count only twenty 30<sup>th</sup> August and last seen on 22<sup>nd</sup> September.
- 67 **Meadow Pipit** *Anthus pratensis* First sighting was four near Dalehead on 18<sup>th</sup> March, increasingly common thereafter breeding in suitable habitats such as Tarn Moss, Malham Lings, Fountains Fell etc. Largest flock was forty on 30<sup>th</sup> August, last seen 15<sup>th</sup> October.
- 68 **Pied Wagtail** *Motacilla alba* One 2<sup>nd</sup> February near Waterhouses was very early with no more till the start of the general arrival in mid-March. Five pairs between Pot Hole Lane and Henside breeding in roadside walls. First juveniles seen 12<sup>th</sup> June near Darnbrook, last record four on 26<sup>th</sup> September.
- 69 **Yellow Wagtail** *Motacilla flava* Four males near Low Trenhouse 20<sup>th</sup> April was the first record. Population similar to last year with one pair near Capon Hall, one near Low Trenhouse and at least five around Tennant Ghyll where juveniles seen on 19<sup>th</sup> July. Last sighting was a single bird on 30<sup>th</sup> August.
- 70 **Wren** *Troglodytes troglodytes* One in song on Tarn Fen 27<sup>th</sup> February was the first record for year. The number of pairs on Tarn Estate was low with a count of six singing birds. Gradually disappeared during October and by 30<sup>th</sup> November virtually none were left in the area.
- 71 **Dunnock** *Prunella modularis* This unobtrusive species was present throughout year. Only three localities were occupied by presumably breeding birds at Waterhouses, near Sandhill and near Tarn House. A juvenile was seen at Waterhouses on 25<sup>th</sup> July. Paul Holmes recorded two to four pairs in 1960 so apparently there has been little change since.
- 72 **Robin** *Erithacus rubecula* One or two birds wintered at both ends of the year, at least six pairs present in breeding season. Eight singing birds in Tarn Woods on 15<sup>th</sup> October would mainly relate to passage birds.
- 73 **Redstart** *Phoenicurus phoenicurus* First of year was one in song near Ha Mire 14<sup>th</sup> April. Probably six or seven pairs present in Tarn Woods, first juvenile seen on 16<sup>th</sup> June and the last sighting was on 20<sup>th</sup> August.
- 74 **Wheatear** *Oenanthe oenanthe* One near Capon Hall was the first return on 19<sup>th</sup> March. Bred commonly at many sites, typically around Great Close Scar, Cowside Beck area, various roadside walls, Dalehead etc. Many juveniles around mid-June onwards. The latest ever record was a single bird near Westside House 5<sup>th</sup> November.



Robin

- 75 **Stonechat** *Saxicola torquatus* It was a surprise that there were any records at all after last years hard weather had decimated populations countrywide. One was seen near Dambrook 2<sup>nd</sup> June.
- 76 **Song Thrush** *Turdus philomelos* First record 22<sup>nd</sup> February with six in song on 24<sup>th</sup> March on Tarn Estate, one pair also present at High Trenhouse. Final sighting was on 14<sup>th</sup> October.
- 77 **Redwing** *Turdus iliacus* Up to ten birds were seen irregularly on Tarn Estate from January to 27<sup>th</sup> February. Small numbers returned on 12<sup>th</sup> October, peak count only thirty on 14<sup>th</sup> October. None seen after 12<sup>th</sup> November.
- 78 **Mistle Thrush** *Turdus viscivorus* First of year were two singing birds near Waterhouses on 16<sup>th</sup> January, present thereon till December when birds in song on 29<sup>th</sup> and 31<sup>st</sup>. Three pairs probably attempted to breed on Tarn Estate with no signs of success. Peak count was eight on Chapel Fell 7<sup>th</sup> October.
- 79 **Fieldfare** *Turdus pilaris* Present in area from January to 26<sup>th</sup> April with flocks of varying sizes. Peak counts one hundred plus near Dalehead 1<sup>st</sup> March and two hundred near Low Trenhouse 14<sup>th</sup> March. First of return were one hundred plus on Tarn Fen 14<sup>th</sup> October, only small numbers then irregularly till year end.
- 80 **Blackbird** *Turdus merula* Recorded throughout year in varying numbers, few birds during the winter months with an increase in passage periods March and October. A few pairs bred on Tarn Estate, one pair bred in a small field barn at Waterhouse.
- 81 **Ring Ouzel** *Turdus torquatus* Just one record of this rapidly declining species, a male down Pot Hole Lane for a few hours on 22<sup>nd</sup> April.
- 82 **Garden Warbler** *Sylvia borin* One on 24<sup>th</sup> April at the regular Sandhill breeding site was the earliest ever return for the area. Away from this site a bird sang for long periods on West Fen and one sang for a day only by East Gate. Last of year was again at Sandhill on 7<sup>th</sup> June where probably attempted to breed.
- 83 **Blackcap** *Sylvia atricapilla* Recorded in Tarn Woods 18<sup>th</sup> April to 18<sup>th</sup> August. Six in song on 20<sup>th</sup> May with a pair feeding young near bird hide 4<sup>th</sup> July.
- 84 **Sedge warbler** *Acrocephalus schoenobaenus* No breeding took place for the second year running but at least a bird was seen, a single passage bird on Tarn Fen 28<sup>th</sup> August.
- 85 **Willow Warbler** *Phylloscopus trochilus* First of arrival was a single bird on Tarn Fen 7<sup>th</sup> April, by 16<sup>th</sup> April at least fifteen birds in song in Tarn Woods. Pairs seen feeding young near West Boathouse 10<sup>th</sup> June and east of Tarn House 11<sup>th</sup> June. No records after 21<sup>st</sup> July – a very early departure date.
- 86 **Chiffchaff** *Phylloscopus collybita* Small numbers passed though Tarn Estate from 2<sup>nd</sup> April to 8<sup>th</sup> May. A very poor autumn return passage with just two single birds or bird on 30<sup>th</sup> September and 1<sup>st</sup> October.
- 87 **Pied Flycatcher** *Ficedula hypoleuca* A good year with one pair successfully raising young in a nest box just east of the bird hide. Singing birds were also present east of Tarn House and on Tarn Fen but these probably failed to attract mates. This was the first successful breeding in the area since 1997. Recorded in period 3<sup>rd</sup> May to 16<sup>th</sup> June.
- 88 **Spotted Flycatcher** *Muscicapa striata* Probably around six pairs on Tarn Estate, one of which nested in an open fronted nestbox. First record was 9<sup>th</sup> May, the last 17<sup>th</sup> August.
- 89 **Great Tit** *Parus major* This resident species was reduced in numbers compared to former years, at least two pairs bred in nest boxes.
- 90 **Blue Tit** *Parus caeruleus* Fifty three nest boxes were checked this year on 9<sup>th</sup> June, a week later



than last year and unfortunately a few had already fledged young. Nevertheless eight nest boxes contained young.



Coal Tit

**91 Coal Tit *Parus ater*** Two to six pairs bred in Tarn Woods with smaller numbers present in the winter months.

**92 Long-tailed Tit *Aegithalos caudatus*** Present throughout the year though elusive and not often seen. One or possibly two pairs bred successfully, two adults and at least four juveniles on Tarn Fen 24<sup>th</sup> July. The usual October influx probably took place but with birds already present it was impossible to be sure. A flock of ten was seen on a few dates in latter half of year.

- 93 Nuthatch *Sitta europaea*** A welcome increase in breeding pairs this year with probably six pairs two at least in nest boxes. A frequent visitor to the feeding stations which is a great help to the species in the winter months.
- 94 Treecreeper *Certhia familiaris*** Little seen of this species in 2011. Only one pair located in the vicinity of Sandhill Cottage though it is probable that other, undetected, pairs were present in Tarn Woods.
- 95 Magpie *Pica pica*** Apart from a pair which spent a few weeks on Tarn fen in the breeding season most sightings came from the area around Capon Hall where up to four birds were seen at times. Single birds at Rainscar on 16<sup>th</sup> April and Darnbrook in June were noteworthy.
- 96 Jackdaw *Corvus monedula*** As usual widespread and common, breeding at many sites such as Tarn House, Great Close Scar, Highfolds etc. A count of over four hundred at Spiggot on 27<sup>th</sup> March is typical.
- 97 Rook *Corvus frugilegus*** No sign of any breeding at Low Trenhouse but a count of fifty nests at Spiggot in May.
- 98 Carrion Crow *Corvus corone*** Remains a common breeding resident.
- 99 Raven *Corvus corax*** One pair bred at usual site raising three young, monthly sightings below:

	Jan	Feb	Mar	Apr	May	Jun	Jul	Aug	Sep	Oct	Nov	Dec
2011	1	2	2	0	0	1	0	1	4	1	2	1

- 100 Starling *Sturnus vulgaris*** One in song Waterhouse on 20<sup>th</sup> January was first for year. Recorded thereon for rest of year. At least five pairs bred on Tarn Estate, peak count in year was one hundred plus on 21<sup>st</sup> November. Flock sizes have dropped markedly in last few years.
- 101 Chaffinch *Fringilla coelebs*** Small numbers in winter months confined to feeders. Returned in late February/March. Twenty five in song Pot Hole Lane to east Gate on 16<sup>th</sup> March. First juvenile seen 16<sup>th</sup> June. No more than six birds then at feeders in November and December.
- 102 Brambling *Fringilla montifringilla*** A poor showing this year. In early months two or three birds attended feeders at Keepers Cottage from January to 14<sup>th</sup> March. Only one record in autumn, a single bird near Sandhill Cottage on 16<sup>th</sup> November.



- 103 Linnet** *Carduelis cannabina* One back at Low Trenhouse on 20<sup>th</sup> April where later bred. Also recorded near Capon Hall, High Trenhouse and Stangill. Probably had a poor breeding season as peak flock was only ten on 19<sup>th</sup> July, last sighting 18<sup>th</sup> August.
- 104 Twite** *Carduelis flavirostris* A record of two adults and a juvenile near Rainscar 20<sup>th</sup> July was the only sighting in year.
- 105 Lesser Redpoll** *Carduelis flammea* Bred on Tarn Fen where at least three pairs present at site from 8<sup>th</sup> April to 25<sup>th</sup> July.
- 106 Goldfinch** *Carduelis carduelis* Present throughout year but only in small numbers. In winter months mainly seen at the bird feeders, Bred at High Trenhouse and on Tarn Estate, possibly also near Capon Hall. September is usually the peak time for flocks, but in 2011 only one flock of any size was seen, forty on Tarn House Meadow 6<sup>th</sup> and 27<sup>th</sup> September.
- 107 Greenfinch** *Carduelis chloris* Just a small number of sporadic sightings in the year mainly at bird feeders, no more than four birds at any time. One calling near Tarn House 11<sup>th</sup> July was the only indication of any attempt at breeding.
- 108 Siskin** *Carduelis spinus* An exceptionally poor year with only two at Keepers Cottage bird feeders on 26<sup>th</sup> February.
- 109 Reed Bunting** *Emberiza schoeniclus* First of year was a male down Pot Hole Lane on 3<sup>rd</sup> March with five at bird feeders 13<sup>th</sup> March. Two or three pairs bred on Tarn Fen and probably two in Ha Mire area. Very unusually no late records and the last sighting was on 13<sup>th</sup> July.



Lesser Redpoll

First and last dates of main summer and winter visitors

Species	First Seen	Last Seen
Wheatear	19 <sup>th</sup> March	5 <sup>th</sup> November
Sand Martin	25 <sup>th</sup> March	8 <sup>th</sup> August
Chiffchaff	2 <sup>nd</sup> April	1 <sup>st</sup> October
Swallow	6 <sup>th</sup> April	30 <sup>th</sup> September
Willow Warbler	7 <sup>th</sup> April	21 <sup>st</sup> July
Redstart	14 <sup>th</sup> April	20 <sup>th</sup> August
House Martin	17 <sup>th</sup> April	22 <sup>nd</sup> September
Yellow Wagtail	20 <sup>th</sup> April	30 <sup>th</sup> August
Blackcap	18 <sup>th</sup> April	18 <sup>th</sup> August
Garden Warbler	24 <sup>th</sup> April	7 <sup>th</sup> June
Pied Flycatcher	3 <sup>rd</sup> May	16 <sup>th</sup> June
Spotted Flycatcher	9 <sup>th</sup> May	17 <sup>th</sup> August
Swift	12 <sup>th</sup> May	27 <sup>th</sup> July
Redwing	12 <sup>th</sup> October	27 <sup>th</sup> February
Fieldfare	14 <sup>th</sup> October	26 <sup>th</sup> April





## Butterflies

- 1 **Small Skipper** *Thymelicus sylvestris*. Three Highfolds 11<sup>th</sup> July, one 26<sup>th</sup> July Tarn House Meadow and two Tarn Fen 3<sup>rd</sup> August.
- 2 **Large Skipper** *Ochlodes venata* One at Thoragill 4<sup>th</sup> July was the only record.  
**Brimstone** *Gonepteryx rhamni* **Not recorded in 2011**
- 3 **Large White** *Pieris brassicae* Only six single insects on Tarn Estate; 28<sup>th</sup> April, 3<sup>rd</sup> May, 28<sup>th</sup> June, 2<sup>nd</sup> July and 11<sup>th</sup> July.
- 4 **Small White** *Pieris rapae* Singles on 14<sup>th</sup> July and 1<sup>st</sup> September.
- 5 **Green-veined White** *Pieris napi* Records stretched from 20<sup>th</sup> April to 15<sup>th</sup> September from the usual haunts, mainly Tarn Fen where fifty-five on 9<sup>th</sup> May. The second brood was very poor with no more than ten at any time.
- 6 **Orange-tip** *Anthocharis cardamines* On Tarn Fen below Sandhill Cottage two 28<sup>th</sup> April, one 30<sup>th</sup> April and three 3<sup>rd</sup> May, all these were males.
- 7 **Green Hairstreak** *Callophrys rubi* Maximum count on Tarn Fen sixteen 9<sup>th</sup> May in period 24<sup>th</sup> April to 9<sup>th</sup> May.
- 8 **Small Copper** *Lycaena phlaeas* One on Tarn Fen 15<sup>th</sup> September was the first record since 2007.
- 9 **Northern Brown Argus** *Aricia artaxerxes* Singles; near Stangill, a new site 26<sup>th</sup> June, Tarn House Meadow 27<sup>th</sup> June and Highfolds 11<sup>th</sup> and 25<sup>th</sup> July.
- 10 **Common Blue** *Polyommatus icarus*  
First seen 11<sup>th</sup> June and last 17<sup>th</sup> August, noted at the following localities; roadside Chapel Fell, Stangill, Highfolds, Tarnhouse Meadow, Streetgate, Great Close Scar and Tarn Fen. Peak count was sixty one on Tarn Estate, 11<sup>th</sup> July.  
**Holly Blue** *Celastrina argiolus* **Not recorded in 2011**
- 11 **Red Admiral** *Vanessa atalanta* Two 9<sup>th</sup> May was the first sighting and the last three 27<sup>th</sup> September. Peak count only twenty-one 1<sup>st</sup> September.
- 12 **Painted Lady** *Vanessa cardui* One 1<sup>st</sup> September the only record.
- 13 **Small Tortoiseshell** *Aglais urticae* Recorded 10<sup>th</sup> April to 14<sup>th</sup> October; maximum only five 3<sup>rd</sup> August.
- 14 **Peacock** *Inachis io* Recorded 8<sup>th</sup> April to 27<sup>th</sup> September; numbers are still low, peak count only seventeen 1<sup>st</sup> September.
- 15 **Comma** *Polyommatus c-album* One near Keeper's Cottage 1<sup>st</sup> September was the only record.
- 16 **Dark Green Fritillary** *Argynnis aglaja* Recorded from Fen, Highfolds, Streetgate, Tarn House Meadow, roadside Chapel Fell and Great Close Scar in period 8<sup>th</sup> June to 1<sup>st</sup> September; peak count seven 29<sup>th</sup> July.



**Gatekeeper** *Pyronia tithonus* **Not recorded in 2011**

- 17 **Speckled Wood** *Pararge aegeria* Just a single insect in Tarn Woods 25<sup>th</sup> June.

**Wall** *Lasioommata megera* **Not recorded in 2011**

- 18 **Meadow Brown** *Maniola jurtina* Recorded 27<sup>th</sup> June to 1<sup>st</sup> September; maximum count sixteen Tarn Estate 3<sup>rd</sup> August

- 19 **Ringlet** *Aphantopus hyperantus* The best year since colonization, recorded from 2<sup>nd</sup> July to 3<sup>rd</sup> August from Highfolds, Thoragill, roadside Chapel Fell and Ha Mire. Maximum counts thirty-five Highfolds 11<sup>th</sup> July and twenty-five at roadside Chapel Fell 25<sup>th</sup> July.



- 20 **Small Heath** *Coenonympha pamphilus* Recorded from Highfolds, Malham Lings, Cowside Beck, Darnbrook, roadside Chapel Fell, Streetgate, Great Close Scar, Stangill and Tarn House Meadow in the period 19<sup>th</sup> May to 17<sup>th</sup> August. Peak counts thirty-two Cowside Beck 12<sup>th</sup> June and fifty-six Street Gate 3<sup>rd</sup> July.

## Dragonflies & Damselflies

**Banded Demoiselle** *Calopteryx splendens* **Not recorded in 2011**

- 1 **Emerald Damselfly** *Lestes sponsa* Recorded on Tarn Fen 25<sup>th</sup> July to 9<sup>th</sup> September with up to six individuals at times.
- 2 **Large Red Damselfly** *Pyrrhosoma nymphula* One 11<sup>th</sup> June and two 2<sup>nd</sup> July on Tarn Fen were the only records.
- 3 **Azure Damselfly** *Coenagrion puella* Three 27<sup>th</sup> June and four 2<sup>nd</sup> July on the Fen.

**Common Blue Damselfly** *Enallagma cyathigerum* **Not recorded in 2011**

**Blue-tailed Damselfly** *Ischnura elegans* **Not recorded in 2011**

- 4 **Common Hawker** *Aeshna juncea* Up to eight individuals at times on Tarn Estate in period 14<sup>th</sup> July to 30<sup>th</sup> September.

**Southern Hawker** *Aeshna cyanea* **Not recorded in 2011**

**Golden-ringed Dragonfly** *Cordulegaster boltonii* **Not recorded in 2011**

- 5 **Four-spotted Chaser** *Libellula quadrimaculata* One on Tarn Fen with a damaged wing 3<sup>rd</sup> August was the only record.

**Broad-bodied Chaser** *Libellula depressa* **Not recorded in 2011**

- 6 **Common Darter** *Sympetrum striolatum* One 15<sup>th</sup> September, two 27<sup>th</sup> September, three 30<sup>th</sup> September and one 3<sup>rd</sup> October, all on Tarn Fen.

- 7 **Black Darter** *Sympetrum danae* Up to six on Tarn Estate in period 1<sup>st</sup> September to 30<sup>th</sup> September.

## Moths

I changed the moth trap this year from a Heath style 30W actinic trap to a 125W mercury vapour Robinson trap. This has the reputation as being the best there is and it certainly resulted in bigger catches per night. That coupled with trapping on more dates during the year gave an increase in both the number of species recorded (132) and also the total number of moths caught (over 4000 in 2011). There were a number of nights when over thirty species were recorded. Whilst this is a high number for a single night in comparison to previous years at Malham Tarn, people in more productive habitats at lower altitudes will regularly get over a hundred species per week so the diversity here is still low.

One of the highlights was the finding of a Red-necked Footman *Atolmis rubricollis* on the 27<sup>th</sup> June. This is a species that has been slowly spreading east from a population in Lancashire to the west and north of the Forest of Bowland. Spectacular finds were an Elephant Hawk-moth (*Deilephila elpenor*) on the 27th July and two Herald Moths (*Scoliopteryx libatrix*) on 11th April and 4th June.

David Brown led his usual Butterflies and Moth course at the Field Centre between 25<sup>th</sup> and 29<sup>th</sup> July and recorded an additional fifteen species taking the total for the year to 147 species.

- 133 Confused
- 134 Double Dart
- 135 Fen Square-spot
- 136 Flame
- 137 Gothic
- 138 Grey Pine Carpet
- 139 Northern Rustic
- 140 Pinion-streaked Snout
- 141 Satin Beauty
- 142 Slender Pug
- 143 Small Rivulet
- 144 Swallow Prominent
- 145 Swallow-tailed Moth
- 146 Twin-spot Carpet
- 147 Welsh Wave

A further addition to the Malham Tarn list was a plum moth *Stenoptilia scabiodactyla* that was found, and identified, by Dr. Mark Young of Aberdeen University on the species-rich grassland just below the cliffs of Highfolds Scar on 13<sup>th</sup> June 2011.

There may also be some more moth records for Malham Tarn that were collected during extensive trapping that took place around the site as part of the Yorkshire Naturalists Union 150<sup>th</sup> Anniversary Field Meeting that was held at the Centre in late July. These will be added to the lists for the site in due course.

Robin Sutton  
December 2011





[illegible]



## Fungi

2011 was slightly disappointing in terms of recording Fungi on the Malham Tarn Estate, twenty new species were recorded (numbers shown in red below) which brings the total number I've found here up to 224. As in previous years I know there are still many more that I haven't, as yet, been able to identify. Certain Genera (such as *Agaricus*, *Entoloma* and *Inocybe*) still cause me problems. New keys have been produced this year for *Agaricus* and *Inocybe* and some progress has been made on species of the later genus this year. Grassland species such as *Waxcaps* and various *Entoloma* species seemed to be rather scarce this year and there seemed far fewer woodland species around as well. Maybe the very dry spring had had some effect on the likelihood of species producing fruiting bodies. The other problem was simply getting out into the field in the main autumn fungus season when my days off almost invariably coincided with poor weather. As in previous years I would like to acknowledge the help I get from Chris Yeates and various other contributors to the Wild About Britain (WAB) fungi forums who have helped on many occasions with helpful suggestions as to a species' identity.

Robin Sutton  
December 2011

- 1 *Badhamia utricularia* **Slime-mould** 15<sup>th</sup> November, Tarn Woods on *Trametes versicolor* on fallen Beech (SD892671).
- 2 *Calocera cornea* **Small Stagshorn** 14<sup>th</sup> August, Tarn Woods above cutting on fallen log (SD892671).
- 3 *Calocera pallidospathulata* **Pale Stagshorn** 9<sup>th</sup> July, Tarn Woods on fallen deciduous trunk (SD892671).
- 4 *Calocera viscosa* **Yellow Stagshorn** 14<sup>th</sup> August, Tarn Woods above cutting on fallen Larch (SD892671).
- 5 *Clavaria acuta* **Pointed Club** 11<sup>th</sup> September, Tarn Woods in soil by path (SD892671).
- 6 *Clavulina rugosa* **Wrinkled Club** 18<sup>th</sup> September, Tarn Woods in soil alongside path (SD892671).
- 7 *Clitocybe fragrans* **Fragrant Funnel** 20<sup>th</sup> November, Tarn Woods under Beech (SD892673).
- 8 *Clitocybe nebularis* **Clouded Agaric** 24<sup>th</sup> November, Tarn Woods in Beech litter near limestone boulder (SD889673).
- 9 *Collybia butyracea* **Buttercap** 18<sup>th</sup> September, Tarn Woods under Beech (SD889672).
- 10 *Crepidotus applanatus* **Flat Oysterling** 14<sup>th</sup> August, Tarn Wood, by drive to High Stables on well rotten fallen log (Beech or Sycamore) (SD892672).
- 11 *Crepidotus cesatii* 15<sup>th</sup> November, Tarn Woods on Beech twig (SD892671).
- 12 *Cylindrobasidium laevis* (*evolvens*) 20<sup>th</sup> November, Tarn Woods on fallen Beech branch (SD889673).
- 13 *Entoloma elodes* 23<sup>rd</sup> July, Tarn Fen in *Sphagnum* (SD887671).
- 14 *Flamulina velutipes* **Velvet Shank** 5<sup>th</sup> March, Tarn Woods nr. "Magic Log" on cut Ash stump (SD895672).



- 15 *Ganoderma applanatum* **Artist's Bracket** 5<sup>th</sup> March Tarn, Woods nr. "Magic Log" on fallen Sycamore trunk (SD895672).
- 16 *Gymnopus dryophilus* **Russet Toughshank** 19<sup>th</sup> June, Tarn Fen below Sandhill Cottage base of Willow trunk (SD888672).
- 17 *Helvella lacunosa* **Elfin Saddle** 20<sup>th</sup> November, Tarn Woods above cutting in moss under Beech (SD892671).
- 18 *Heterosphaeria patella* 27<sup>th</sup> March, Tarn Fen below Sandhill Cottage on dead Angelica stems (SD888672).
- 19 *Hydnum repandum* **Wood Hedgehog** 17<sup>th</sup> September, Tarn Woods at base of Beech Tree (SD889673).
- 20 *Hygrocybe conica* **Blackening Waxcap** 21<sup>st</sup> July, Keepers Cottage in lawn (SD888673)
- 21 *Hygrocybe miniata* **Vermilion Waxcap** 24<sup>th</sup> September, Tarn Woods above cutting with moss and Wild Strawberry alongside path under Beech/Ash/Sycamore (SD892671).
- 22 *Inocybe geophylla* **White Fibrecap** 21<sup>st</sup> August, Tarn Woods under Beech/Ash (SD892671).
- 23 *Inocybe petiginosa* **Scurfy Fibrecap** 11<sup>th</sup> September, Tarn Woods under Beech (SD892671).
- 24 *Kretzschmaria deusta* **Brittle Cinder** 5<sup>th</sup> March, Tarn Woods nr. "Magic Log" on fallen Sycamore trunk (SD895672).
- 25 *Kuehneromyces mutabilis* **Sheathed Woodtuft** 11<sup>th</sup> September, Tarn Woods at base of dead Beech (SD895672).
- 26 *Lactarius aurantiacus* **Orange Milkcap** 21<sup>st</sup> November, Tarn Woods under Beech on moss covered rock (SD892671).
- 27 *Lactarius pterosaurus* 19<sup>th</sup> September, Tarn Woods under Beech (SD892673).
- 28 *Lycoperdon perlatum* **Common Puffball** 18<sup>th</sup> September, Tarn Woods on moss covered rocks under Beech (SD892673).
- 29 *Lycoperdon pyriforme* **Stump Puffball** 8<sup>th</sup> August, Tarn Woods by Sandhill Cottage on fallen deciduous trunk (SD888673)
- 30 *Merismodes anomala* 5<sup>th</sup> November, Tarn Woods on cut surface of Beech log (SD892671).
- 31 *Mycena silvae-nigrae* 17<sup>th</sup> April, Tarn Fen - by peat pools on Scots Pine or Larch log used on boardwalk (SD888671).
- 32 *Nectria epishaeria* 15<sup>th</sup> November, Malham Tarn Woods on Hypoxylon on cut surface of Beech log (SD892671).
- 33 *Neobulgaria pura* **Beech Jellydisc** 14<sup>th</sup> August, Tarn Woods above cutting on fallen Beech (SD892671).
- 34 *Oudemansiella mucida* **Poreclain Fungus** 18<sup>th</sup> September, Tarn Woods on Beech (SD892671).
- 35 *Panellus mitis* **Elastic Oysterling** 15<sup>th</sup> November, Tarn Woods on Larch twig (SD892671).



*Lactarius aurantiacus* Orange Milkcap



*Merismodes anomala*

- 36 *Polyporus brumalis* **Winter Polypore** 17<sup>th</sup> April, Tarn Fen, Horseshoe Plantation on Whitbeam debris (felled branches) (SD883670).
- 37 *Polyporus ciliatus* **Fringed Polypore** 17<sup>th</sup> April, Tarn Fen, Horseshoe Plantation on Whitbeam debris (felled branches) (SD883670).
- 38 *Psathyrella cernua* 27<sup>th</sup> November, Tarn Woods on moss covered Ash bole (SD889674).
- 39 *Psilocybe subcoprophila* or *merdicola* 21<sup>st</sup> July, Malham Lings on well weathered cow dung (SD899674).
- 40 *Russula betularum* **Birch Brittlegill** 8<sup>th</sup> August, Tarn Fen - 1st bridge in *Sphagnum* under Birch (SD888671).
- 41 *Sebacina epigaea* 14<sup>th</sup> August, Tarn Wood, by drive to High Stables on soil under Beech (SD892672).
- 42 *Trichia decipiens* **Slime-mould** 6<sup>th</sup> November, Tarn Woods on deciduous debris (SD889673).
- 43 *Tyromyces chioneus* 2<sup>nd</sup> January, Tarn Fen standing but dead Birch trunk (SD884671).
- 44 *Xenodochus carbonarius* 17<sup>th</sup> May, Tarn Close on Great Burnet *Sanguisorba officinalis* (SD895671).



*Polyporus ciliatus* Fringed Polypore



*Trichia decipiens* Slime-mould

**Stages in the development of a slime-mould** *Badhamia utricularia*. This is the same colony as seen at the top of the first Fungi page. That picture was taken on the 15<sup>th</sup> Nov. 2011. The next two below are of the plasmodium stage feeding on a bracket fungus - *Trametes versicolor*.



By the 27<sup>th</sup> November it had moved off the bracket fungus onto the lower surface of the fallen trunk it was growing on and had started to form into small orange balls hanging from threads. These balls contained the developing spores and by the 30<sup>th</sup> November most had become black with mature spores inside.





## 2011 Weather Report January - April

January Summary			Mean for period 1961 - 1990
Warmest Day	15 Jan	9.1 °C	
Average Maximum		4.3 °C	3.6 °C
Coldest Day	7 Jan	-6.5 °C	
Average Minimum		-0.3 °C	-0.9 °C
Days with Air Frost		16 days	18 days
Wettest Day	10 Jan	31.8 mm	
Total Rain for Month		150.5 mm	154 mm
Days with > 1mm Rain		15 days	18 days
Sunniest Day	20 Jan	7.3 hours	
Total Sunshine		41.7 hours	35.3 hours

February Summary			Mean for period 1961 - 1990
Warmest Day	25 Feb	9.5 °C	
Average Maximum		6.2 °C	3.4 °C
Coldest Day	1 Feb	-1.1 °C	
Average Minimum		1.6 °C	-1.1 °C
Days with Air Frost		8 days	17.3 days
Wettest Day	3 Feb	30.4 mm	
Total Rain for Month		221.4 mm	103.6 mm
Days with > 1mm Rain		22 days	13 days
Sunniest Day	10 Feb	5.6 hours	
Total Sunshine		29.9 hours	58.5 hours

March Summary			Mean for period 1961 - 1990
Warmest Day	24 Mar	13.8 °C	
Average Maximum		8.0 °C	5.7 °C
Coldest Day	7 Mar	-4.2 °C	
Average Minimum		1.1 °C	0 °C
Days with Air Frost		8 days	15.2 days
Wettest Day	11 Mar	10.4 mm	
Total Rain for Month		36.2 mm	125.6 mm
Days with > 1mm Rain		7 days	15.8 days
Sunniest Day	23 Mar	10.3 hours	
Total Sunshine		108.8 hours	85.3 hours

April Summary			Mean for period 1961 - 1990
Warmest Day	21 Apr	18.9 °C	
Average Maximum		13.4 °C	8.7 °C
Coldest Day	14 Apr	-3.2 °C	
Average Minimum		5.1 °C	1.8 °C
Days with Air Frost		1 days	7.3 days
Wettest Day	4 Apr	15.6 mm	
Total Rain for Month		31.4 mm	90.5 mm
Days with > 1mm Rain		6 days	13.3 days
Sunniest Day	27 Apr	13.1 hours	
Total Sunshine		205.4 hours	120.3 hours

**January** - there was a little bit of snow between the 4<sup>th</sup> and 11<sup>th</sup> and a couple of days at the end of the month (28<sup>th</sup> and 30<sup>th</sup>) when there were a few centimetres of lying snow but after the cold, snowy end to 2010 when we had sub zero temperature and deep lying snow for most of December this was something of a relief. In fact January turned out to be a month which was close to average in most respects. Most of the precipitation (90%) fell in a 12 day period from the 4<sup>th</sup> to the 15<sup>th</sup> with the rest of the month being very dry with ground frosts recorded daily for most of the second half of the month. Ice covered the Tarn for most of January but strong winds at the beginning of February broke and dispersed the ice and the Tarn then remained ice free for the rest of the winter. This was a real contrast to 2010 when the Tarn was ice covered well into the middle of March.

**February** - mild and wet; the coldest day was the 1<sup>st</sup> of the month when a rather mild -1.1°C was recorded, temperatures for the rest of the month were well above average apart from a short spell (15<sup>th</sup> - 22<sup>nd</sup>) in the middle of the month when we had a few centimetres of snow. Rainfall (221mm) was nearly double the average amount with very wet periods 3<sup>rd</sup> - 6<sup>th</sup> and 11<sup>th</sup> - 18<sup>th</sup>. The month ended up as the 5<sup>th</sup> wettest ever (since Malham Tarn records began in 1959) but still a long way behind Feb 2002 - 364mm of rain.

**March** - in contrast to February this was a very dry month with only about a third of the average rainfall - in the end it turned out to be the second driest March ever after the 26mm of March 1993. It was another warmer than average month. Temperatures by the end of the month were into double figures but for most of this period we also had extensive cloud cover and as a result had only slightly more than the average sunshine.

**April** - was another very dry month (the fourth driest we've ever recorded), it was warm and ended up as the sunniest month of the whole year. The mean maximum temperature for the month was the highest ever at 13.4°C (the previous highest was 2007 at 12.6°C) and the 21<sup>st</sup> April was the eighth warmest April day ever. The total sunshine hours (205.4 hrs) was the highest ever, and the first time over 200 hrs, for April. The 27<sup>th</sup> was the second sunniest April day we've recorded and very close to the

sunniest ever (13.3 hrs on 23<sup>rd</sup> April 2006). Of the very little rainfall we had; most of it (87%) fell in the first week of the month and after that there was just one day (11<sup>th</sup>) when we had more than 1mm of rain.



## 2011 Weather Report May – August

May Summary			Mean for period 1961 - 1990
Warmest Day	6 May	17.1 °C	
Average Maximum		12.4 °C	12.3 °C
Coldest Day	11 May	0.5 °C	
Average Minimum		5.8 °C	4.6 °C
Days with Air Frost		0 days	1.2 days
Wettest Day	16 May	20.7 mm	
Total Rain for Month		119.5 mm	92.3 mm
Days with > 1mm Rain		17 days	13.5 days
Sunniest Day	1 May	13.1 hours	
Total Sunshine		134.5 hours	163.4 hours

**May** - the relatively warm dry weather of late April extended for a few days into early May but from the 5<sup>th</sup> onwards the month became colder and wetter but in actual fact the month ended not far from the norm for May in many respects. Temperatures were close to the average values for May and there was slightly more rain and slightly less sun than average. The wettest part of the month was around the middle (15<sup>th</sup> - 17<sup>th</sup>) when we had 40mm of rain. This was followed by a couple of dry days and then more rain (20<sup>th</sup> - 23<sup>rd</sup> 232mm) and then a couple more dry days followed by more rain (26<sup>th</sup> - 29<sup>th</sup> 22mm).

June Summary			Mean for period 1961 - 1990
Warmest Day	27 Jun	24.3 °C	
Average Maximum		15.3 °C	15.1 °C
Coldest Day	10 Jun	2.8 °C	
Average Minimum		7.5 °C	7.6 °C
Days with Air Frost		0 days	0.10 days
Wettest Day	12 Jun	20.9 mm	
Total Rain for Month		94.1 mm	93.7 mm
Days with > 1mm Rain		12 days	13.1
Sunniest Day	11 Jun	12.4 hours	
Total Sunshine		145.6 hours	151.5 hours

**June** - was another very average month; temperatures, rainfall and sunshine were all very close to the monthly mean values. Like May the rainfall came in regular doses - there were a couple of wet days on the 7<sup>th</sup> and 8<sup>th</sup> (14mm), a very wet day on the 12<sup>th</sup> (21mm) and then a more prolonged wet spell from 15<sup>th</sup> - 24<sup>th</sup> (56mm). The first spell of really nice summer weather didn't arrive until the last week of June and this is when we had our warmest day of the year 24.3°C and a spell of largely dry weather.

July Summary			Mean for period 1961 - 1990
Warmest Day	4 Jul	21.0 °C	
Average Maximum		16.7 °C	16.5 °C
Coldest Day	23 Jul	4.9 °C	
Average Minimum		9.0 °C	9.2 °C
Days with Air Frost		0 days	0 days
Wettest Day	17 Jul	13.7 mm	
Total Rain for Month		90.6 mm	100.3 mm
Days with > 1mm Rain		9 days	13 days
Sunniest Day	2 Jul	12.5 hours	
Total Sunshine		137.7 hours	136.4 hours

**July** - the good spell of weather from the end of June extended into early July and there was then another wet spell, 42mm of rain falling between the 5<sup>th</sup> and 8<sup>th</sup>. After another week or so of dry weather we had another 40mm of rain between the 15<sup>th</sup> and 18<sup>th</sup>. Once again the month ended up as being very close to average in terms of temperatures, rainfall and sunshine.

August Summary			Mean for period 1961 - 1990
Warmest Day	3 Aug	21.2 °C	
Average Maximum		15.6 °C	16.1 °C
Coldest Day	17 Aug	5.4 °C	
Average Minimum		9.6 °C	9.3 °C
Days with Air Frost		0 days	0 days
Wettest Day	10 Aug	78.6 mm	
Total Rain for Month		170.8 mm	130.8 mm
Days with > 1mm Rain		20 days	14.7 days
Sunniest Day	9 Aug	8.9 hours	
Total Sunshine		112.4 hours	142.6 hours

**August** - if June and July had been decidedly average, with none of the long hot sunny spells that we sometimes get in summer, then August ended up as being distinctly below average. It was slightly colder, much wetter and a lot less sunny than an average August. There was a very wet spell between the 6<sup>th</sup> and the 15<sup>th</sup> when 137mm of rain fell. This is just above the average value for the whole of August. Within that period the 10<sup>th</sup> of August stands out. This day featured in the BBC's weather summary for August 2011 when it was noted that 78.6mm of rain fell at Malham Tarn. This was by far our wettest August day ever, the previous wettest day being the 9<sup>th</sup> August 2004 when we had 64mm. Sunshine hours were once again well below average with only 112 hours recorded. This is the third out of the

last four years with low total sunshine hours for August (2008 - 63hrs, 2009 - 104hrs, only 2010 with 131hrs was close to average).

## 2011 Weather Report September – December

September Summary			Mean for period 1961 - 1990
Warmest Day	30 Sep	23.2 °C	
Average Maximum		15.1 °C	13.8 °C
Coldest Day	13 Sep	5.6 °C	
Average Minimum		8.8 °C	7.6 °C
Days with Air Frost		0 days	0 days
Wettest Day	5 Sep	34.7 mm	
Total Rain for Month		157.7 mm	138.8 mm
Days with > 1mm Rain		15 days	14.5 days
Sunniest Day	28 Sep	9.7 hours	
Total Sunshine		91 hours	100.8 hours

October Summary			Mean for period 1961 - 1990
Warmest Day	1 Oct	23.1 °C	
Average Maximum		12.4 °C	10.6 °C
Coldest Day	20 Oct	-0.9 °C	
Average Minimum		6.6 °C	5.2 °C
Days with Air Frost		1 days	1.2 days
Wettest Day	9 Oct	35.3 mm	
Total Rain for Month		184.9 mm	150.8 mm
Days with > 1mm Rain		20 days	16.4 days
Sunniest Day	19 Oct	8 hours	
Total Sunshine		64.1 hours	80.0 hours

November Summary			Mean for period 1961 - 1990
Warmest Day	3 Nov	12.7 °C	
Average Maximum		9.6 °C	6.5 °C
Coldest Day	7 Nov	0.1 °C	
Average Minimum		5.2 °C	1.2 °C
Days with Air Frost		0 days	8.8 days
Wettest Day	26 Nov	16.2 mm	
Total Rain for Month		85.2 mm	149.9 mm
Days with > 1mm Rain		12 days	17.1 days
Sunniest Day	6 Nov	8.4 hours	
Total Sunshine		37.5 hours	54.9 hours

December Summary			Mean for period 1961 - 1990
Warmest Day	1 Dec	0 °C	
Average Maximum		0.0 °C	4.6 °C
Coldest Day	2 Dec	0 °C	
Average Minimum		0.1 °C	-0.1 °C
Days with Air Frost		0 days	15 days
Wettest Day	2 Dec	0.0 mm	
Total Rain for Month		0.0 mm	162.0 mm
Days with > 1mm Rain		0 days	17.5 days
Sunniest Day	1 Dec	0 hours	
Total Sunshine		0 hours	37.5 hours

**September** – most of the first three weeks were cool and wet. There were slightly warmer and drier spells between the 1<sup>st</sup> and 4<sup>th</sup> and again between the 9<sup>th</sup> and 11<sup>th</sup> but generally the temperatures were below average and there was more rain than usual. The 5<sup>th</sup> September was very wet (34.7mm) and between the 4<sup>th</sup> and 9<sup>th</sup> we had over half (72mm) of the normal September rainfall (139mm). The 15<sup>th</sup> and 16<sup>th</sup> were also very wet (36mm) but by the 25<sup>th</sup> we'd entered into a dry period with rising temperatures that reached a peak (23.2°C) on the 30<sup>th</sup>. This was actually the second warmest day of the whole year.

**October** – had the third warmest day of the year – 23.1°C on the 1<sup>st</sup>, this was also the warmest October day we've ever recorded. Temperatures fell steadily over the next week and then stayed a degree or two above average for most of the rest of the month. Rainfall ended up above average but this can be accounted for, to a large extent, by a very wet spell between the 8<sup>th</sup> and 11<sup>th</sup> when 110mm of rain fell with each of the four days having over 20mm of rain. The first frosts of the autumn occurred on the 20<sup>th</sup> when the air temperature dropped to -0.9°C and the grass to -5.4°C but this was very much the exception in a generally warm month.

**November** – the above average temperatures of October extended into November and we had our warmest November ever with an average maximum of 9.6°C beating the previous record of 9.3°C set in 1994. There were no days with an air frost and the grass minimum fell below zero on only three days – 6<sup>th</sup>, 7<sup>th</sup> and 23<sup>rd</sup>. It was also a dry month with only 57% of the average November rainfall. Most of the rain came in the last ten days with 48mm falling in the last nine days.

**December** – a mild but wet, grey and dreary month to finish the year. It rained everyday bar one and the total rainfall for the month was the sixth highest ever at 282.3mm. Not surprisingly we didn't have much sunshine, only 18.4 hours – the third lowest ever. It was mild though with temperatures about a degree above average and very few days had any frost. There was no significant ice cover on the Tarn just small amounts recorded in sheltered bays on a couple of mornings.

## Records

### Temperature

Warmest Day  
Coldest Day  
Warmest Month  
Coldest Month  
Lowest Grass Temp.

### Rainfall

Wettest Day  
Wettest Month  
Driest Month  
Total Rainfall for Year

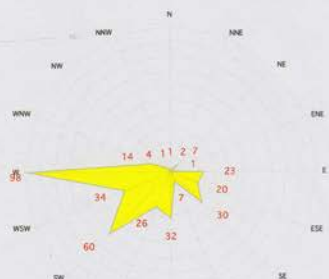
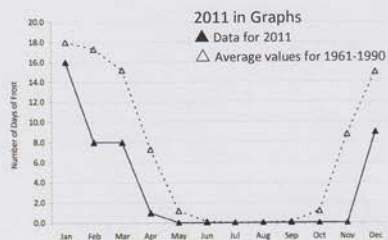
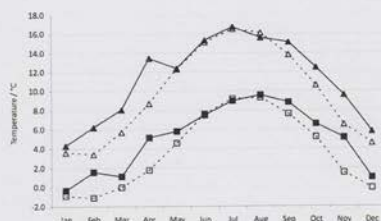
### Sunshine

Sunniest Day  
Sunniest Month  
Least Sunny Month

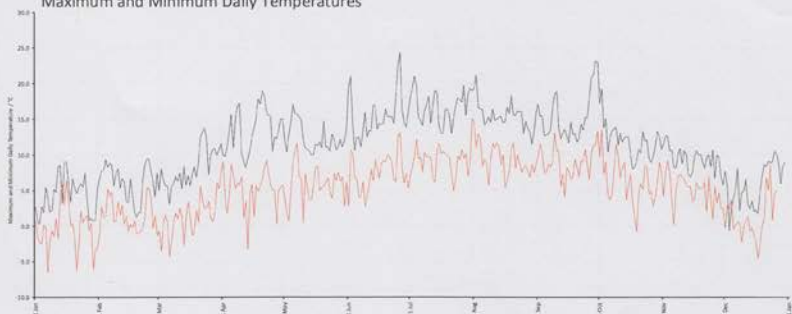
2011		
Date	Amount	
27th June	24.3 °C	
7th January	-6.5 °C	
July	16.7 °C	
January	-0.3 °C	
6th January	-11.8 °C	
28th August	78.6 mm (3.1 in)	
December	282.3 mm (11.1 in)	
April	31.4 mm (1.2 in)	
	1631.3 mm (64.2 in)	
27th Apr & 1st May	13.1 hours	
April	205.4 hours	
December	18.4 hours	

### Ever (1959 - 2010)

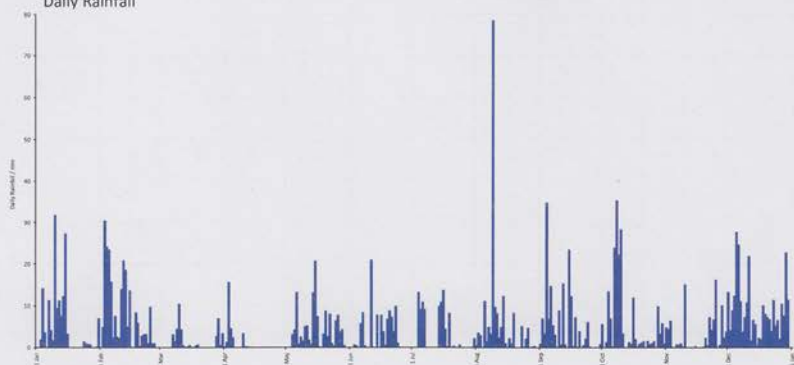
Date	Amount
3rd Aug. 1990	28.2 °C
21st Dec. 2010	-17.1 °C
Jul. 2006	21.9 °C
Feb. 1986	-5.6 °C
5th Mar. 2001	-20.1 °C
31st Jan. 2002	135.4 mm (5.3 in)
Nov. 2009	378.9 mm (14.9 in)
Jan/Feb 1979	No Rain
2000 (Wettest)	2097.9 mm (82.6 in)
1975 (Driest)	1124.5 mm (44.27 in)
7th May 1985	15.7 hours
Jul. 2006	257.5 hours
Jan. 1997	No Sun



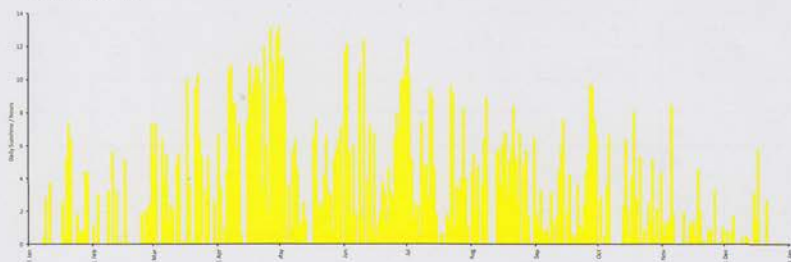
Maximum and Minimum Daily Temperatures



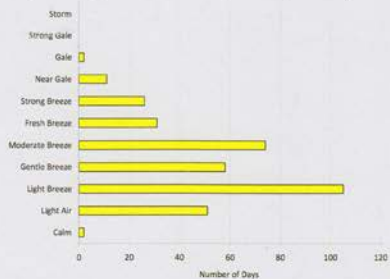
Daily Rainfall



Daily Sunshine



Wind Speeds at 9:00 GMT





## Malham Tarn Field Centre

Malham Tarn Field Centre is one of 17 centres run by the Field Studies Council – the leading provider of environmental education in the country. It has been helping students of ecology, heritage and landscape explore the environment around the Tarn since 1947. Visitors to the Centre cover the whole range from pre-school day visits to retired adults on leisure learning courses. Our Leisure Learning Courses run throughout the year and are led by expert tutors. If you want to find out more about the area around Malham Tarn then why not book on one of our courses? To contact the Centre: Phone **01729 830331** or write to us at: **Malham Tarn Field Centre, Settle, North Yorkshire, BD24 9PU.**

More details about our courses are also on our website [www.field-studies-council.org](http://www.field-studies-council.org) and visit our blog <http://malhamtarnfieldcentre.blogspot.com/> to find out more about what we do at Malham Tarn Field Centre.



**FSC**

BRINGING  
ENVIRONMENTAL  
UNDERSTANDING TO ALL

Malham Tarn Field Centre

Settle, North Yorkshire. BD24 9PU

Tel: 01729 830331 Fax: 01729 830658

Email: [enquiries.mt@field-studies-council.org](mailto:enquiries.mt@field-studies-council.org)

Web site: [www.field-studies-council.org](http://www.field-studies-council.org)

The cost of producing this report is supported by the:  
**James Reckitt Charity**



THE  
NATIONAL  
TRUST