

Malham Tarn

Wildlife & Weather Report



2009

Brian Shorrock
& Robin Sutton



Malham Tarn Field Centre
Settle, North Yorkshire BD24 9PU
Tel: 01729 830331



2009 Wildlife Report – A Summary

For the third successive year the weather in the summer, particularly in July and August was awful; wet and windy throughout. This further impacted badly on populations of butterflies and dragonflies but we did manage to record 115 species of bird. Sadly some species, that are normally recorded, were not seen at all notably Grey Partridge, Ring Ouzel, Bullfinch, Goldcrest and more surprisingly Sedge Warblers, none of these were recorded at all, the first time for many years, usually two or three pairs breed on Tarn Fen.

The recent arrival of Otter (*Lutra lutra*) at the Tarn either last year or very early this year (2009) had a slight adverse effect on some aquatic birds in the form of predation on Moorhen, Little Grebe and probably forced Great Crested Grebes to abandon a favourite breeding location in the Tarn inflow bay.

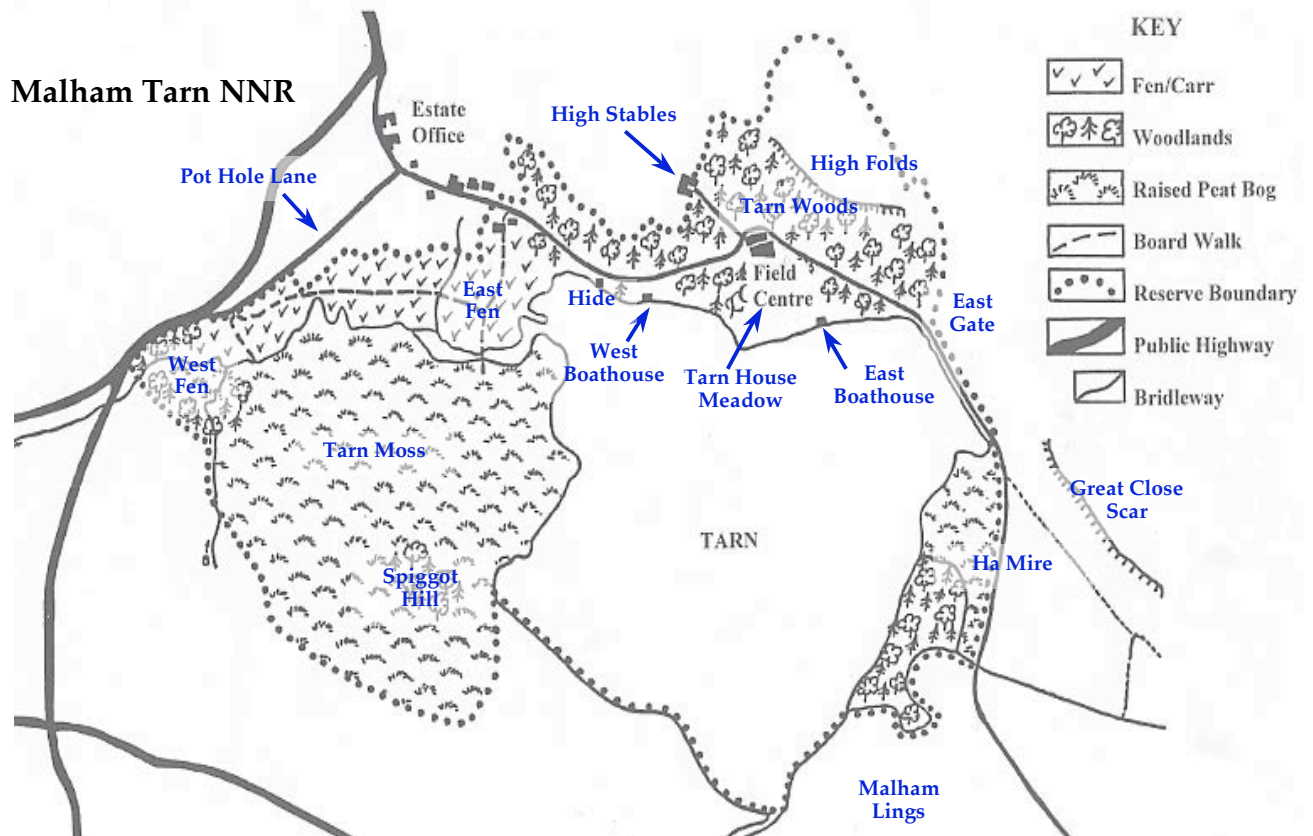
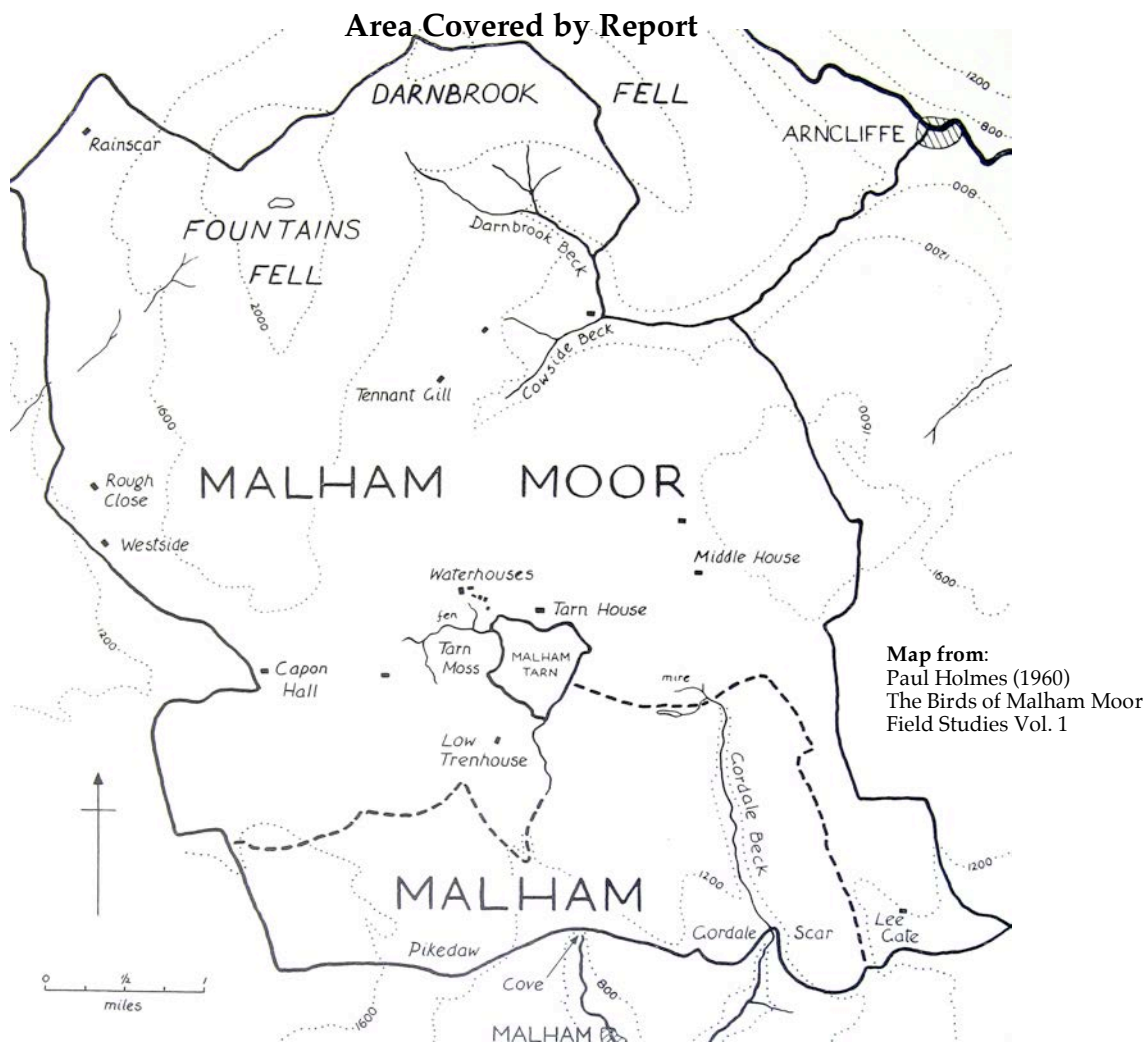
Two of the highlights of the year were undoubtedly the male Brambling in song in June along with a Bittern seen in flight, also in June.

Without records from numerous people this report would be far less comprehensive and in particular I would like to thank the following: firstly Robin Sutton, without his hard work this report would not appear, Tony Bullough, Roger Clark, Ian Court, Martin Davies, Paul and Elaine Davies, David Hodgson, Dr. M Holmes, Denis Lord, Jo and Gerald Light, Richard Mann, Mr & Mrs Keith Mudd, Adrian Pickles, Jacqueline Stevens, Stuart Ralph, Colin Straker and Eva Svobodova – with apologies for any omissions.

Brian Shorrock

January 2010





Birds Records 2009

- 1 **Little Grebe** *Tachybaptus ruficollis* Present throughout year on Tarn, resorting to the Inflow Stream in hard weather. Numbers slightly reduced compared to former years, peak count only ten 24th September. Reasons for slight decline are possibly due to the presence of Otter (*Lutra lutra*) on the Tarn which may well have predated a few birds. In spite of this two pairs bred successfully, one pair East Bay and another in front of the Bird Hide, they raised at least five young between them.
- 2 **Great Crested Grebe** *Podiceps cristatus* Like its smaller relative Otter may have affected this species, whilst not actually predating any birds it may have stopped them from attempting to breed in the Inflow Bay, a few pairs attempted to breed, all failed for the first time I know of. Peak count in year was only fourteen on 20th April, recorded on Tarn 28th February to early December.
- 3 **Cormorant** *Phalacrocorax carbo* One or two birds appeared on the Tarn, staying a few days before departing, during the periods January to March and July to year end.
- 4 **Bittern** *Botaurus stellaris* One flushed up on Tarn Fen 17th January and one flying north near Tarn Inflow on the surprising date of 12th June, the fourth and fifth records for the area.
- 5 **Grey Heron** *Ardea cinerea* Recorded all months, usually single birds at the Tarn or on Tarn Fen and nearby streams, four 9th August and three 30th August were the peak counts.
- 6 **Whooper Swan** *Cygnus cygnus* All records as follows in what was rather a good year: two adults were in east bay for a short period 19th February, twenty-eight on the Tarn 13th March left later in a north westerly direction, twenty-four flew west at 7:40am on 19th March and on the same date at 1:00pm fifty-two were seen flying off in a similar direction. The later flock being the largest ever recorded in the area. In marked contrast only a singleton, circling over Tarn on 6th November, in later months.
- 7 **Pink-footed Goose** *Anser brachyrhynchus* In the early months twenty-five flying south west over Tarn Moss 25th January, thirty-two north west over Tarn 19th February and similarly four 30th March. In autumn returning birds in flight over area: two hundred south east 17th September, thirty-seven over Winskill from direction of Capon Hall 13th October and two on South Shore of Tarn 4th December.
- 8 **Greylag Goose** *Anser anser* Up to six birds were irregularly present on or near Tarn from 19th February to 9th September but the anticipated breeding attempt has not yet materialised.
- 9 **Canada Goose** *Branta canadensis* Present most of the year near Tarn, two pairs attempted to breed on Tarn Moss but both were controlled, i.e. eggs pricked. Monthly peak counts:

Jan	Feb	Mar	Apr	May	Jun	Jul	Aug	Sep	Oct	Nov	Dec
0	3	8	14	52	200	210	0	28	28	30	2

- 10 **Barnacle Goose** *Branta leucopsis* One with Canada Geese on South Shore of Tarn 2nd April is the seventh record for the area.
- 11 **Mallard** *Anas platyrhynchos* Present throughout year on or near Tarn, three broods appeared in May, one brood at least fledged successfully. One pair probably attempted to breed on Great Close Scar again as birds were regularly seen flying on or off cliff on quite a few occasions. Peak count in year was seventy-five on 7th July. Monthly peak counts:

Jan	Feb	Mar	Apr	May	Jun	Jul	Aug	Sep	Oct	Nov	Dec
16	8	8	6	8	16	75	50	50	60	20	20

- 12 **Shoveler** *Anas chipeata* Four, two pairs, on Tarn for a short period 28th February was the only record.

- 13 **Wigeon** *Anas penelope* Present January to 26th April on Tarn apart from a few cold spells causing some to temporarily desert the area. One returned 13th August with numbers then building slowly up to year end. Monthly peak counts:

Jan	Feb	Mar	Apr	May	Jun	Jul	Aug	Sep	Oct	Nov	Dec
90	70	70	45	0	0	0	1	2	12	40	45

- 14 **Teal** *Anas crecca* Recorded on or near Tarn January to 22nd April and 7th July to year end. One pair possibly attempted to breed but no signs of any success. Monthly peak counts:

Jan	Feb	Mar	Apr	May	Jun	Jul	Aug	Sep	Oct	Nov	Dec
8	18	8	10	0	0	1	8	20	12	4	10

- 15 **Pochard** *Aythya farina* Recorded throughout year on Tarn but in reduced numbers compared with former years. A single male in summer but no suggestion of any breeding attempt. A curious hybrid showing characteristics of the American Redhead was present on the Tarn 22nd February for the day only. Monthly peak counts:

Jan	Feb	Mar	Apr	May	Jun	Jul	Aug	Sep	Oct	Nov	Dec
50	60	45	1	1	1	4	12	6	10	10	4

- 16 **Tufted Duck** *Aythya fuligula* Present on the Tarn all months. One or two pairs probably attempted to breed as usual but no broods were ever seen. Monthly peak counts:

Jan	Feb	Mar	Apr	May	Jun	Jul	Aug	Sep	Oct	Nov	Dec
40	60	70	70	22	27	80	50	35	30	20	15

- 17 **Goldeneye** *Bucephala clangula* Recorded on Tarn January to 18th April and 21st October to year end. Monthly peak counts:

Jan	Feb	Mar	Apr	May	Jun	Jul	Aug	Sep	Oct	Nov	Dec
21	16	15	8	0	0	0	0	0	1	4	4

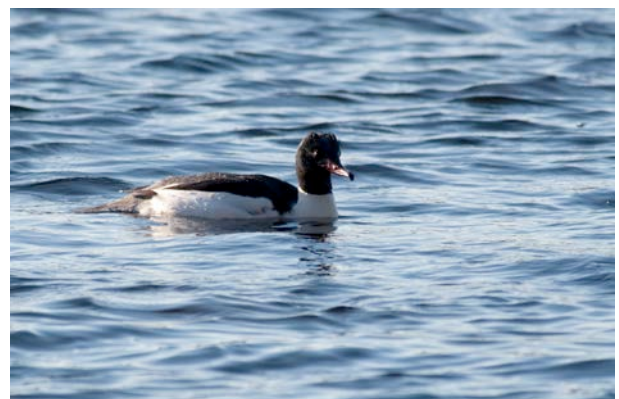
- 18 **Goosander** *Mergus merganser* A pair, occasionally a single male, present on the Tarn 14th January to 7th May, no doubt a local breeding pair from a low lying stream just outside the Malham Tarn recording area.

- 19 **Hen Harrier** *Circus cyaneus* The only record was of two ringtails, probably juveniles, near Waterhouses on 29th August.

- 20 **Marsh Harrier** *Circus aeruginosus* One heading south over Dalehead 11th August was the only record.

- 21 **Buzzard** *Buteo buteo* More sightings than last year and no longer nowadays a surprise to see this species anywhere in the area. One pair bred at usual site raising two young. Monthly records:

Jan	Feb	Mar	Apr	May	Jun	Jul	Aug	Sep	Oct	Nov	Dec
1	1	2	3	3	1	0	1	4	1	1	0

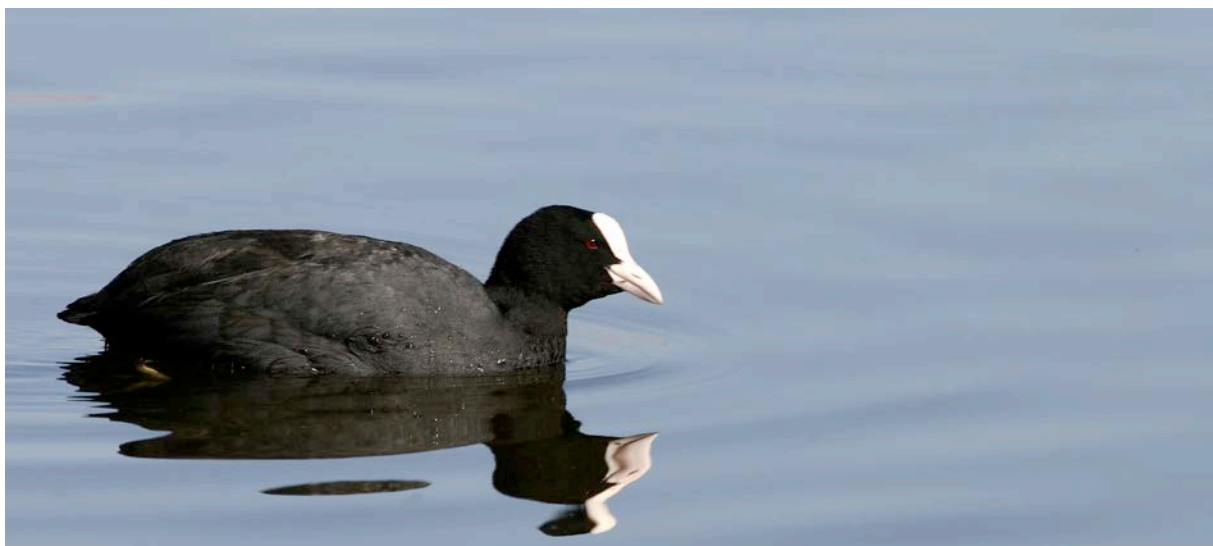


Goosander

- 22 **Sparrowhawk** *Accipiter nisus* Three sightings of single birds on 10th August, 24th September and 12th October were, surprisingly, the only records in the year. The presence of Buzzard in the area may be having a detrimental effect on the species.

- 23 **Kestrel** *Falco tinnunculus* A poor year with sightings well down, no more than two birds at any time, the awful July/ August again will not have helped. One pair attempted to breed as usual on Great Close Scar but probably failed. Most records in September with six.

- 24 **Peregrine Falcon** *Falco peregrinus* One pair raised four young on the edge of the recording area. Recorded most months of the year, usually single birds but two on 13th July and 24th September.
- 25 **Merlin** *Falco columbarius* Only four sightings of single birds in the year on 26th February, 7th March, 15th August and 19th September. One found dead near Middle House late September 2008 had been ringed on Barden Moor 24th June in the same year.
- 26 **Red Grouse** *Lagopus lagopus* Resident in small numbers on Fountains Fell and near Dalehead, four here 2nd March, probably only a fraction of the actual numbers present. Similarly on Fountains Fell above Rainscar, three 23rd February and one 2nd May.
- 27 **Red-legged Partridge** *Alectoris rufa* Just two records of this introduced species, one calling near Ha Mire Wood 2nd March and a pair near Rough Close 21st April.
- 28 **Common Pheasant** *Phasianus colchicus* With no apparent influx from nearby shooting estates and a winter more like former years the population on the Tarn Estate dropped. Highest count in year was only twelve on 11th April. Eight calling males in Tarn Woods 31st March, two broods of three young seen at Waterhouses 18th July and Globe Flower Wood 25th August.
- 29 **Moorhen** *Gallinula chloropus* Numbers have been much reduced this year and at one time thought to have become extinct in area, no records at all in April for instance. The maximum count in year was six on 14th February. Disturbance and predation by Otter may be a factor in population reduction. Two juveniles on Tarn Fen 7th June provided evidence that at least one pair bred successfully.



Coot

- 30 **Coot** *Fulica atra* Up to one hundred and fifty birds on Tarn in January, cold snaps later led to the Tarn freezing over so the vast majority departed and no more than sixty birds were present prior to the breeding season. After numerous failed attempts two pairs managed to rear at least six young. Monthly peak counts:

Jan	Feb	Mar	Apr	May	Jun	Jul	Aug	Sep	Oct	Nov	Dec
150	60	50	40	15	16	18	100	250	300	300	300

- 31 **Oystercatcher** *Haematopus ostralegus* One at East Bay of Tarn on 16th February was the first of year. Single pairs were located at South Shore of the Tarn, Great Close Scar, three young here 16th June, Thoragill area and near Capon Hall. Peak count in year only five on 20th March. Last seen on 23rd July.
- 32 **Little Ringed Plover** *Charadrius dubius* One at the Outflow on 5th July was only the fourth record ever for area, the only other sightings were in 1950, 1951 and 2006.
- 33 **Ringed Plover** *Charadrius hiaticula* The only records came from Tarn Outflow with single birds on 15th May and 5th July.

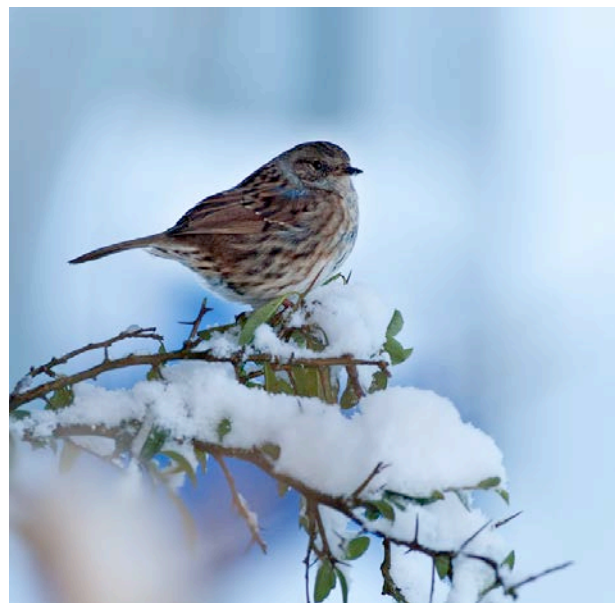
- 34 **Golden Plover** *Pluvialis apricaria* Few records this year, just single birds near Tarn on 14th January and 23rd July and a flock of at least fifty showing characteristics of the Northern Race (*altifrons*) near Dalehead from 20th March to 25th April, finally also near Dalehead, one on 2nd June.
- 35 **Lapwing** *Vanellus vanellus* Bred Tarn Outflow area, near Dalehead (six + pairs), Rough Close, Great Close Mire and a few elsewhere. Recorded in every month of year in area though leaving for short periods in cold weather snaps and quickly returning when the weather ameliorates. Peak count of year was fifty on 20th February near Malham Tarn. Thirty near Dalehead 2nd March would have probably been the total local breeding population.
- 36 **Dunlin** *Calidris alpina* A poor showing this year with no indication of a breeding attempt near Tarn Outflow. Only sightings of single birds on Tarn shoreline 25th and 28th April, 4th and 11th May and 7th July.
- 37 **Common Sandpiper** *Actitis hypoleuco* No breeding attempt, formerly six pairs around Tarn shoreline. Just single birds recorded this year on 27th April and 13th July.
- 38 **Redshank** *Tringa totanus* One arrived back on 1st March with five present by months end, all near Tarn. Probably a slight reduction in breeding pairs from the usual four or five to three. One pair Middle House ponds and two pairs around Tarn Outflow where young were seen in late June. Last recorded on 7th July.
- 39 **Greenshank** *Tringa nebularia* Just two records of single birds at the Tarn on 12th May and 5th July.
- 40 **Curlew** *Numenius arquata* First record 22nd February and the last 9th November. Bred near Tarn and at other sites. Flock counts on Tarn Moss were as follows: c500 29th March, c200 2nd April, c150 18th June and c100 7th July.
- 41 **Whimbrel** *Numenius phaeopus* Less records than usual, just single birds on Tarn Moss 2nd and 29th April.
- 42 **Woodcock** *Scolopax rusticola* Just the normal small number of sightings in the early and late periods of the year. One 2nd January, two 14th January and one 8th March then one 1st November, three 8th November, two 16th November and finally one 2nd December. All records coming from the Tarn Estate – usually on Tarn Fen.
- 43 **Snipe** *Gallinago gallinago* Usually a few birds are seen in the winter months, 2009 was no exception with one on Fen 2nd and 17th January and four Tarn Moss 6th November and 4th December. Two were seen around the spring near Kiln House during the snow period from 20th December to the year end. Seven near Capon Hall 2nd February would probably have been returning birds. Displaying and calling birds were recorded in the breeding season on Malham Lings, Tarn Moss, Street Gate, Tarn Fen and Fountains Fell.
- 44 **Jack Snipe** *Lymnocyrtus minimus* Single birds on Tarn Fen 30th January and 15th March, probably present every winter in small numbers but easily missed.
- 45 **Black-headed Gull** *Larus ridibundus* No change in status, still a common non breeding visitor and passage bird in good numbers, typically one hundred plus present Tarn 22nd August.
- 46 **Common Gull** *Larus canus* Recorded January to 19th May when six immatures near Darnbrook. Returned later than normal with two 18th August, then commonly present to year end. The Tarn roost was only counted once on 1st March when a minimum of 750 birds present.
- 47 **Lesser Black-backed Gull** *Larus fuscus* Can be seen on or around Tarn throughout year albeit only small numbers in winter months. Many birds pass through the area in March/April and August/September. Also present in good numbers as a non-breeding birds in summer months, typically forty near Middle House 11th May and forty-five near Darnbrook 19th May – the bulk of these birds immatures. Peak count in year was one hundred and thirty on South Shore of Tarn 22nd August.
- 48 **Herring Gull** *Larus argentatus* Only one record of a single bird on Tarn 28th February, whilst undoubtedly rare there will, probably, be some birds which just pass through the area and are unrecorded.

- 49 **Great Black-backed Gull** *Larus marinus* An odd bird, usually immature, may be seen in the summer months but in the main a winter visitor in small numbers. Peak count in early months was twenty-five on 2nd January and at end of year twenty 4th December, both flocks near the Tarn.
- 50 **Arctic Tern** *Sterna paradisae* Three over the Tarn in rather misty conditions 1st May were probably of this species.
- 51 **Black Tern** *Chidonias niger* One over Tarn 15th May for a few hours was the only record.
- 52 **Stock Pigeon** *Columba oenas* Just two records, two flying east near Globe Flower Wood on 23rd May and one near Capon Hall 25th August.
- 53 **Feral Pigeon/Rock Dove** *Columba livia* As far as we know this species is confined to two sites in the area, at Darnbrook where six were seen on 9th July and Dalehead where twenty on 19th July.
- 54 **Wood Pigeon** *Columba palumbus* First record for year was five flying west over Tarn on 14th February, increasingly common thereafter. A probable ten pairs bred on Tarn Estate. Peak count in year was eighteen on 13th August. With an almost complete failure of the beech mast crop no birds were seen after 24th September.
- 55 **Cuckoo** *Cuculus canorus* Just two records of this declining species, single birds on Tarn Estate 30th April and 23rd May.
- 56 **Tawny Owl** *Strix aluco* Small mammal populations were very low in the first half of the year, no Wood Mice (*Apodemus sylvaticus*) or Bank Voles (*Clethrionomys glareolus*) at all were trapped by students, staying at the Field Centre, for the first three months of the year and numbers caught stayed low until August. As a consequence there was no evidence of any successful breeding by Tawny Owls on Tarn Estate but the four or five resident pairs were often heard and occasionally seen, usually single birds but two on 29th May and 13th August.
- 57 **Long-eared Owl** *Asio otus* Only two records from Tarn Estate, where probably attempted to breed, one calling 10:00pm 31st March and one seen 2nd June.
- 58 **Short-eared Owl** *Asio flammeus* Just one record of a single bird seen flying over Pot Hole Lane 9th December.
- 59 **Little Owl** *Athene noctua* Only two records of single birds near Dalehead 2nd June and near Great Close Scar 16th June.
- 60 **Swift** *Apus apus* Recorded 11th May to 20th July in small numbers mainly over the Tarn where thirty on 9th June.
- 61 **Kingfisher** *Alcedo atthis* A typical showing, a single bird at the Tarn at least from 11th to 19th September.
- 62 **Green Woodpecker** *Picus viridis* One, occasionally, two birds were seen or heard on Tarn Estate from 2nd January to 12th May. One mainly frequented Highfolds and the other Low Tren House or Round Wood. Both were probably males which failed to attract a mate. This species has yet to breed in area but if the current trend continues will soon do so.
- 63 **Great Spotted Woodpecker** *Dendrocopos major* One pair bred in Tarn Woods based around Sandhill Cottage where heard drumming in early January and juveniles seen later in year. Singles in Round Wood 20th February and at Thoragill 2nd July were probably birds dispersing from elsewhere.



Great Spotted Woodpecker

- 64 **Sky Lark** *Alauda arvensis* First seen 20th February when two on Malham Lings where at least six pairs subsequently attempted to breed. A flock of thirty near Low Trenhouse 2nd March would probably have been local breeding birds. Present on Chapel Fell, Fountains Fell and Street Gate during the breeding season. A surprisingly early last date of 11th July, normally a few passage birds are seen in September/October.
- 65 **Sand Martin** *Riparia riparia* First of year was one flying over Tarn on 31st March. Bred as usual in Tarn Moss peat banking with at least eight pairs, seventeen adults and young were perched near nest site on 7th July. Last recorded on 13th August.
- 66 **Swallow** *Hirundo rustica* One on 31st March was the earliest ever recorded. Breeding numbers on the estate were lower than usual and birds departed slightly earlier, last seen on 20th September. Peak count of year came from Waterhouses with fifty on 6th September.
- 67 **House Martin** *Delichon urbica* Very few records this year with no apparent breeding on Tarn Estate. Two pairs probably bred at Tennant Ghyll, one pair Low Trenhouse. None were seen in the area till late date of 23rd May and last recorded 13th August, also an early departure date.
- 68 **Meadow Pipit** *Anthus pratensis* No sign of any wintering birds on Tarn Moss though few visits were made to the site. First of return was four on 16th March and by mid April common and widespread. One pair feeding young on Tarn Fen 2nd June. Two notable flocks in August were eighty near Limestones on 21st and fifty near Low Trenhouse the day after. Last record was on 8th October.
- 69 **Tree Pipit** *Anthus trivialis* Just two records of presumably passage birds with two Ha Mire Wood 9th May and one Tarn Fen 25th July.
- 70 **Pied Wagtail** *Motacilla alba* First of year was near Tarn Outflow 1st March and by end of month back in good numbers along with many passage birds. Two pairs in roadside walls between Capon Hall and Kiln House, first juveniles seen 2nd June with the last record 24th September.
- 71 **Yellow Wagtail** *Motacilla flava* A further probable drop in numbers of this declining species, only one pair appeared to be present between Tarn Outflow and Low Trenhouse, usually two or three. Bred as usual near Tennant Ghyll where three or four pairs. First seen Tarn Outflow 20th April and the last at Low Trenhouse on 18th August. Eight birds, two adults and six juveniles were near the Tarn on 10th August, these would probably be local breeding birds.
- 72 **Grey Wagtail** *Motacilla cinerea* One near Tarn on 9th September was the only record in the year.
- 73 **Wren** *Troglodytes troglodytes* Only one or two birds wintered both ends of the year, the majority leaving for more favourable climes. One nest with young in stone cutting near Tarn House on 31st May fledged successfully later. Singing birds on Tarn Estate were lower than last year probably as a result of the harsher than usual winter.
- 74 **Dunnock** *Prunella modularis* Little was seen of this uncommon breeding bird on Tarn Estate in 2009. One pair bred near Keepers Cottage and possibly one at Waterhouses with no more than four birds at any time of year.



Dunnock



Robin

- 75 **Robin** *Erithacus rubecula* No apparent change in status, at least six pairs on Tarn Estate, first juveniles seen early July. Most birds leave the area in winter months leaving only three or four birds.
- 76 **Redstart** *Phoenicurus phoenicurus* One in song 10th April near the bird hide was first of year. Probably three to four pairs bred on Tarn Estate, one pair at Tarn House, one West Fen, one Highfolds and probably one near bird hide. Three broods were seen on 24th June so at least successful in most cases. Seems to have stabilised at a low level after a steady decline over the last decade or so. Last seen on 23rd July.
- 77 **Wheatear** *Oenanthe oenanthe* One near Tennant Ghyll on 15th March was the first of the year with the next near Rainscar on 19th March. First juveniles of year of this fairly common breeding species were noted on 5th July, seven mainly juveniles were near Tarn Outflow on 25th August. The area between Capon Hall and Henside invariably turns up the last sighting, 2009 was no exception with one here on 20th October.
- 78 **Whinchat** *Saxicola rubetra* Now a rarity in area, the only record was a pair for day only in Ha Mire Wood on 9th May.
- 79 **Stonechat** *Saxicola torquata* A pair set up territory and probably bred at the edge of Tarn Moss near West Bay inflow stream, present at least 2nd May to 13th June when an agitated pair seen. Single birds later in the year were seen at Globe Flower Wood 11th July, Low Trenhouse 23rd July, Capon Hall 25th August and 20th September at Henside.
- 80 **Song Thrush** *Turdus philomelos* Recorded 19th February to 6th September, increased slightly with at least six pairs on Tarn Estate and one at High Trenhouse. The increase has probably been helped by the wet summers of the last three years.
- 81 **Redwing** *Turdus iliacus* Irregularly present on Tarn Estate from January to 3rd April when eight birds seen, no more than twelve at any time. Returned on 12th October with two hundred on 14th October feeding on their favourite Yew berries near Tarn House then small numbers irregularly to year end.
- 82 **Mistle Thrush** *Turdus viscivorus* Present most months of year. At least three pairs attempted to breed on Tarn Estate with no signs of any success. Notable flocks in year were ten 2nd January, twelve 25th August and twenty 24th September.
- 83 **Fieldfare** *Turdus pilaris* Present on Tarn Estate most days from January to 25th April, peak count one hundred and fifty 16th March and one hundred 29th March. First of return were near Tarn House on 13th October with no more than one hundred to year end.
- 84 **Blackbird** *Turdus merula* Recorded throughout year on Tarn Estate with much reduced numbers in the winter months. Six in song Tarn Woods 28th February, one pair bred successfully in Cotoneaster at Tarn House, Quite numerous at times in October with fifteen plus on 15th and 26th.
- 85 **Garden Warbler** *Sylvia borin* One singing near Sandhill Cottage from 4th to 9th June, this being the only record so probably did not breed.
- 86 **Blackcap** *Sylvia atricapilla* Present in Tarn Woods 12th April to 7th July at least. Much lower numbers than normal, only three singing birds on 18th June and no evidence of any success, normally at least six in song.



Pied Flycatcher

- 87 **Common Whitethroat** *Sylvia communis* A passage bird in song for day only in Globe Flower Wood 13th June was the only record.
- 88 **Grasshopper Warbler** *Locustella naevia* One record only, a singing bird heard at 7:30am near Keepers Cottage on 10th April, a fairly early date not seen or heard again.
- 89 **Willow Warbler** *Phylloscopus trochilus* One back in the favoured Tarn Fen on 4th April with two the day after. Twenty birds plus singing on Tarn Estate by 20th April. Appeared to have a good breeding season in spite of the wet weather with many juveniles on Tarn Fen late July/early August. Last seen on 25th August.
- 90 **Chiffchaff** *Phylloscopus collybita* Less records than in the last few years, one 1st April was the first with four on 10th April. Possibly bred as two in song near Sandhill 16th May and one Tarn House area 28th May. No further records till one 9th September and two 19th September – presumably passage birds.
- 91 **Pied Flycatcher** *Ficedula hypoleuca* Two males established territories around recently erected nest boxes on Tarn Fen, singing and entering boxes frequently, present at the site 20th April to 17th May. Unfortunately neither bird attracted a female.
- 92 **Spotted Flycatcher** *Muscicapa striata* First of year was one near stone cutting Tarn House on 11th May. A better year than recently, at least six pairs attempted to breed on Tarn Estate. First juvenile seen 25th July and last recorded Tarn Fen 25th August.
- 93 **Great Tit** *Parus major* No obvious signs of any change in status though possibly numbers were slightly lower due to a harder winter than normal. Bred at a number of sites on Tarn Estate.
- 94 **Blue Tit** *Parus caeruleus* A common resident bird on Tarn Estate breeding readily in recently erected nest boxes. One bird noticed feeding young in a box on West Fen 18th June, no more than twelve birds together at any time of year.
- 95 **Coal Tit** *Parus ater* At least three pairs on Tarn Estate, one of those pairs attempted to breed in a wall at Waterhouses, outcome not known. Present throughout year but in reduced numbers during winter months.
- 96 **Long-tailed Tit** *Aegithalos caudatus* Just one early record, a single down Pot Hole Lane on 19th June. A small flock appeared as usual in autumn with six plus birds on 22nd September, rather earlier than in most years. These birds stayed on Tarn Estate until mid November at least.
- 97 **Nuthatch** *Sitta europaea* At least five pairs bred on Tarn Estate, two successfully in spite of the wet weather, both in nest boxes built for blue and great tits. A regular at the bird feeders throughout the year.
- 98 **Treecreeper** *Certhia familiaris* Whilst at least one pair bred successfully on Tarn estate near Sandhill Cottage, sightings were less frequent than normal, a hardish winter probably taking its toll. One or two were prominent with flocks of tits near feeders in late December.
- 99 **Magpie** *Pica pica* For unknown reasons this species has largely abandoned Tarn Estate in favour of the area between High Trenhouse and Capon Hall where sightings were commonplace and, presumably, breeding was attempted.
- 100 **Jackdaw** *Corvus monedula* This increasingly common resident species bred in a variety of habitats; barns, cliffs, trees and at Tarn House where a blacker than usual bird came down the chimney. At least two pairs were feeding young on Great Close Scar 3rd June – a recently colonised site. Hundreds roost in Spiggot copse on Tarn Moss along with other corvids.
- 101 **Jay** *Garrulus glandarius* Just one record a single bird heard in Tarn Woods for day only on 5th October. This is the usual month for this species to occur in the area.



Coal Tit

- 102 **Rook** *Corvus frugilegus* A very common resident breeding bird, bred at Spiggot Copse as usual where at least one hundred nests though no detailed count.
- 103 **Carrion Crow** *Corvus corone* A common breeding resident bird which is invariably successful. A flock of twenty near Tarn on 11th February is typical. Bred on Tarn Estate and at other localities.
- 104 **Raven** *Corvus corax* The only months this species was not recorded were April and July. One pair raised one young in the recording area, single birds, usually flying over, were the norm, occasionally two birds seen.
- 105 **Starling** *Sturnus vulgaris* Recorded all months in variable numbers, the largest flocks were in January and February with one hundred 26th January and two hundred 28th February. Bred on Tarn Estate, at least six pairs, juveniles first appeared on 18th June.
- 106 **House Sparrow** *Passer domesticus* Very few records of this Tarn rarity, formerly bred at all the farms in the area. A single bird at the bird feeders for day only 22nd March and at Lee Gate where one 18th February and what was probably a breeding pair on 3rd May.
- 107 **Chaffinch** *Fringilla coelebs* Small numbers wintered both ends of the year, probably more than in the past aided by bird feeders at four sites. The return of breeding and passage birds was at its peak in March/April when up to fifty birds were at the feeding stations. Bred on Tarn Estate where probably commoner now than Willow warbler. The peak after season flock was twenty-five down Pot Hole Lane on 23rd July.
- 108 **Brambling** *Fringilla montifringilla* The only record for the year was on the astonishing date of 15th June when a singing male appeared in resplendent breeding plumage at the west end of Pot Hole Lane. This bird was seen by many observers before disappearing on or around 25th June, not surprisingly having failed to attract a mate.
- 109 **Linnet** *Carduelis cannabina* A singing male at the Low Trenhouse breeding site on 11th April was first of year. Probably also bred near Capon Hall, High Trenhouse, Darnbrook and possibly on Tarn Fen where a male in song 29th, 31st May and 23rd July. Notable flocks were thirty near High Trenhouse 12th August and twenty near Low Trenhouse 19th September, last of year was one on 25th September.
- 110 **Twite** *Carduelis flavirostris* The only records came from Dalehead where four 9th May and five 11th August.
- 111 **Lesser Redpoll** *Carduelis cabaret* A pair on the Fen 4th April was the first of return, during this month up to thirty-five birds were at Keepers Cottage bird feeders, most quickly moved on leaving three or four pairs on Tarn Fen where three or more juveniles on 23rd May. Last seen on 12th August.



Lesser Redpoll



Goldfinch

112 Goldfinch *Carduelis carduelis* Recorded throughout the year, though only in small numbers during the winter months, usually seen at the bird feeders. Four or five pairs at least bred on Tarn Estate and at High Trenhouse as usual. Highest counts were in September with a minimum of one hundred in Ha Mire Wood and a similar number on West Fen both on the 20th and eighty near Globe Flower Wood on 25th. All these birds quickly left and by October only a few wintering birds were present.

113 Greenfinch *Carduelis chloris* Small numbers were recorded throughout year, mainly at the bird feeders, eight on 7th October the maximum. Probably bred in Tarn House yews where a singing bird on 1st March, 2nd April and 6th April, possibly also bred along Pot Hole Lane.

114 Siskin *Carduelis spinus* All records from the bird feeders at Keepers Cottage with birds regularly present from 16th March to 2nd May. Peak count was twenty on 14th April.

115 Reed Bunting *Emberiza schoeniclus* Recorded in area 16th March to 8th October, two or three pairs bred on Tarn Fen, one pair Ha Mire Wood and one probably at the eastern end of Spiggot Copse. One or two birds visited the bird feeders during April, these were probably passage birds as was a male on the Tarn shoreline 2nd April.



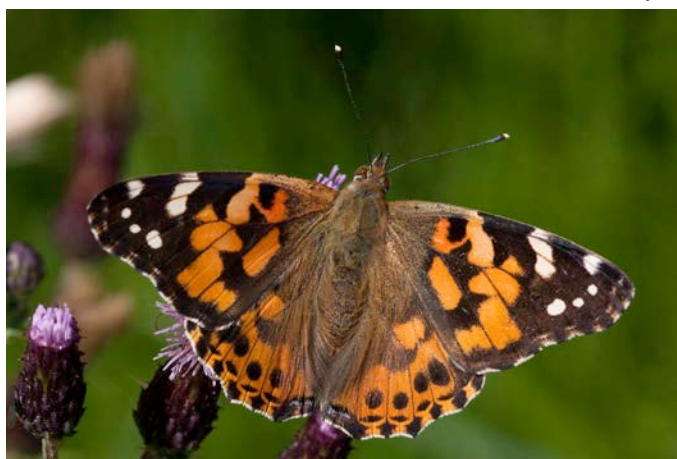
Siskin

**First and last dates of main summer
and winter visitors**

Species	First Seen	Last Seen
Ring Ouzel	No records	No records
Wheatear	15 th March	20 th October
Sand Martin	31 st March	13 th August
Swallow	31 st March	20 th September
Common Sandpiper	27 th April	13 th July
Willow Warbler	4 th April	25 th August
Redstart	10 th April	23 rd July
Yellow Wagtail	20 th April	18 th August
House Martin	23 rd May	13 th August
Sedge Warbler	No records	No records
Chiffchaff	1 st April	19 th September
Blackcap	12 th April	7 th July
Garden Warbler	4 th June	9 th June
Swift	11 th May	20 th July
Spotted Flycatcher	11 th May	25 th August
Redwing	12 th October	3 rd April
Fieldfare	13 th October	25 th April

Butterflies

- 1 **Small Skipper** *Thymelicus sylvestris* Another poor year with only: one at Thoragill; 2nd July, two Highfolds 11th July and one near Tarn House 20th July.
- 2 **Large Skipper** *Ochlodes venata* **Not recorded in 2009**
- 3 **Brimstone** *Gonepteryx rhamni* **Not recorded in 2009**
- 4 **Large White** *Pieris brassicae* Not a bad year for this rather locally uncommon species with five Thoragill 6th July and singles on Tarn Fen 9th and 20th July.
- 5 **Small White** *Pieris rapae* All records as follows, all from Tarn Fen: singles 2nd May, 5th May, 11th July, three 9th August and one on 11th September.
- 6 **Green-veined White** *Pieris napi* A good year with records mainly from the Tarn Fen stronghold from 2nd May to 20th September with peak counts of forty 29th May and one hundred 9th August. Also recorded at Thoragill, Great Close Mire, Street Gate and Globeflower Wood.
- 7 **Orange-tip** *Anthocharis cardamines* Just managed to get on the year list with a single male on Tarn Fen 20th April. Red Admiral
- 8 **Green Hairstreak** *Callophrys rubi* The only site visited was Tarn Fen where recorded from 20th April to 31st May, a poor showing no more than four at any time.
- 9 **Small Copper** *Lycaena phlaeas* **Not recorded in 2009**
- 10 **Northern Brown Argus** *Aricia artaxerxes* Just one record of three on Highfolds 29th June and a report of a colony on Cowside Beck at SD9170.
- 11 **Common Blue** *Polyommatus icarus* Recorded in moderate numbers from Thoragill, Highfolds, Tarn House Meadow, roadside verge Chapel Fell, Great Close Mire and Tarn Fen. Peak counts eighteen Thoragill 2nd July and twenty-three Great Close Mire 11th July. Flight period 16th June to 9th August.
- 12 **Holly Blue** *Celastrina argiolus* **Not recorded in 2009** Painted Lady
- 13 **Red Admiral** *Vanessa atalanta* Quite a good year compared with 2008 and 2007. Recorded from 24th June to 20th September with peak counts of twenty-five 9th September and forty-two on 11th September. The recently planted buddleia bushes near Tarn House attracted high numbers of this and other Nymphalid species.
- 14 **Painted Lady** *Vanessa cardui* Flight period 31st May to 12th September, in spite of a large nationwide influx only small numbers appeared in the Tarn area with the maximum only twelve on 11th September.
- 15 **Small Tortoiseshell** *Aglais urticae* Very few records as follows: one 3rd April, one 13th August, one 22nd August, four 26th August, five 11th September and one 20th September, all records coming from Tarn Estate.



- 16 **Peacock** *Inachis io* Just one spring record, a single on 20th April, then present thereon from 2nd July to 6th October. Peak count was on Tarn Estate with twenty-one 11th September, numbers still much lower than in past.
- 17 **Comma** *Polygonia c-album* A single at Waterhouses on 11th July was the only record.
- 18 **Dark Green Fritillary** *Argynnis aglaja* After bad weather during the flight period in 2007 and 2008, and not much better weather in 2009, numbers recorded were small. Seen in period 11th July to 15th August from roadside verge Chapel Fell, Tarn House Meadow and Thoragill where peak count of only five 6th August.
- 19 **Gatekeeper** *Pyronia tithonus*. **Not recorded in 2009**
- 20 **Speckled Wood** *Pararge aegeria* Just hanging on with only singles on Tarn Estate 9th August, 12th September and a late specimen on 6th October.
- 21 **Wall** *Lasiommata megera* **Not recorded in 2009**
- 22 **Meadow Brown** *Maniola jurtina* A moderate year with poor weather during flight period, recorded 5th July to 25th August. Peak count was only ten on roadside verge Chapel Fell on 11th July.
- 23 **Ringlet** *Aphantopus hyperantus* Fewer numbers than last year, in a flight period 2nd June to 18th July, from Thoragill, roadside verge Chapel Fell, Highfolds and Tarn House Meadow. Maximum count eleven on 6th August.
- 24 **Small Heath** *Coenonympha pamphilus* Numbers held up well in spite of the weather from 2nd June to 18th July. Recorded from Tarn House Meadow, Great Close Scar, Street Gate, Thoragill, and roadside verge Chapel Fell with a peak count of thirty Great Close Scar 11th July.

Peacock



Dragonflies & Damselflies

- 1 **Banded Demoiselle** *Calopteryx splendens* **Not recorded in 2009**
- 2 **Emerald Damselfly** *Lestes sponsa* One on Tarn Fen 9th September was the only record.
- 3 **Large Red Damselfly** *Pyrrhosoma nymphula* Small numbers in period 29th May to 11th July, peak count eight on 2nd June.
- 4 **Azure Damselfly** *Coenagrion puella* Up to eight on Tarn Fen 2nd June to 9th August.
- 5 **Common Blue Damselfly** *Enallagma cyathigerum* Just one record of six on Tarn Fen near Sandhill Cottage on 25th June.
- 6 **Blue-tailed Damselfly** *Ischnura elegans* **Not recorded in 2009**
- 7 **Common Hawker** *Aeshna juncea* A poor year, the 2007 and 2008 summers appeared to have taken a toll of this species. Recorded mainly on Tarn Fen from 9th August to a late 12th October, no more than three at any time.

Large Red Damselfly



8 **Southern Hawker** *Aeshna cyanea* One on Tarn Fen 9th August the only record.

9 **Golden-ringed Dragonfly** *Cordulegaster boltonii* **Not recorded in 2009**

Four-spotted Chaser

10 **Four-spotted Chaser** *Libellula quadrimaculata* Best year so far with up to three on Tarn Fen in period 2nd to 20th June, unfortunately all appeared to be males.

11 **Broad-bodied Chaser** *Libellula depressa* **Not recorded in 2009**

12 **Common Darter** *Sympetrum striolatum*
A poor showing in another bad summer, no more than three on Tarn Fen 6th to 11th September.

13 **Black Darter** *Sympetrum danae* The third successive poor summer stopped this usually common species from appearing in any numbers on Tarn Fen with no more than six in period 9th August to 5th October.



Large Red Damselfly (female) being eaten by nymph of Common Hawker



Moths

A small 30w Actinic Light Trap was operated from Keeper's Cottage during 2009. The species and numbers found are shown in the table overleaf. A total of eighty-eight species of macro moth were recorded during the period 15th April to 10th October. Unfortunately the number of trapping occasions was limited by unsuitable weather before and after these dates and the trap wasn't set at all in May. A number of species active during these periods may have been missed. Species numbered in bold in the table were also found during the annual Butterflies and Moths course run by David Brown (31st July - 7th August 2009) and an additional 26 species (shown below) were also recorded at various light traps situated around Malham Tarn during this course.

- 1 Anomalous
- 2 Barred Hooktip
- 3 Chevron
- 4 Clay
- 5 Common Footman
- 6 Crescent
- 7 Dingy Footman
- 8 Dun-bar
- 9 Early Thorn
- 10 Gold Spot
- 11 Haworth's Minor
- 12 Large Ear
- 13 Lesser Swallow Prominent
- 14 Narrow-winged Pug
- 15 Pine Carpet
- 16 Pinion-streaked Snout
- 17 Poplar Hawk-moth
- 18 Riband Wave
- 19 Rosy Minor
- 20 Rufous Minor
- 21 Slender Brindle
- 22 Small Fanfoot Wave
- 23 Small Rivulet
- 24 Swallow Prominent
- 25 Twin-spot Carpet
- 26 White-spotted Pug

These bring the total number of macro moth species recorded in 2009 to one hundred and fourteen.

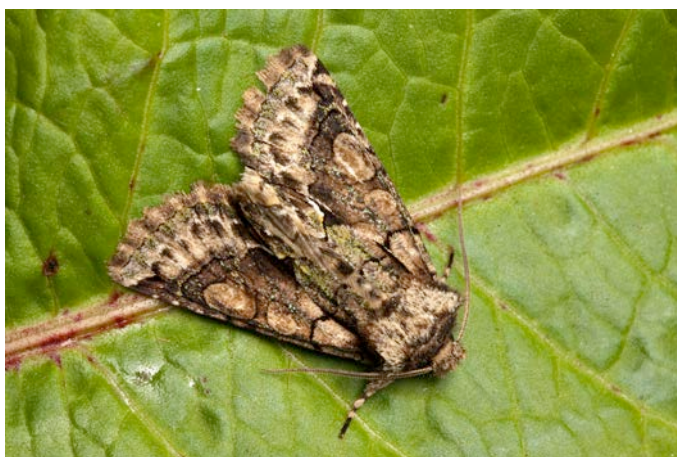
Galium Carpet



Burnished Brass



Green-brindled Crescent



Fungi

2009 was the second year of active recording of Fungi, species shown in **Bold** are new species not recorded in 2008. The total number recorded for the area over the last two years is now at 154 and I'm sure there remain many more to find. A number of species belonging to difficult genera such as *Inocybe*, *Entoloma*, *Agaricus* and *Cortinarius* were observed but despite thorough examination no positive identification to the species level was made. Hopefully in 2010 rather more of these difficult species can be identified to give an even more accurate picture of the fungus species found within the Malham Tarn area.

- 1 *Amanita rubescens* (Blusher) **7th September** SD890672 Tarn Woods
- 2 *Armillaria gallica* (Bulbous Honey Fungus) **13th October** SD893672 Tarn Woods above Tarn House - on cut stump
- 3 *Arrhenia onisca* **4th October** SD887671 Tarn Fen - in Sphagnum under Birch, **11th October** SD886672 Tarn Fen - in Sphagnum under Birch
- 4 *Bisporella citrina* (Lemon Disco) **3rd October** SD889673 Tarn Woods - on fallen branches of Beech
- 5 *Calocera viscosa* (Yellow Stagshorn) **6th September** SD892671 Tarn Woods - on felled and fallen Pine and Larch, **10th October** SD892671 Tarn Woods - on felled and fallen Pine and Larch
- 6 *Clavulina coralloides (cristata)* (Crested Coral) **29th August** SD889673 Tarn Woods - on soil under Beech
- 7 *Clavulina rugosa* (Wrinkled Club) **7th September** SD889673 Tarn Woods - in leaf litter under Beech
- 8 *Clavulinopsis corniculata* (Meadow Coral) **7th September** SD901666 Great Close Scar - with Thyme on top of Limestone boulder
- 9 *Clavulinopsis fusiformis* (Golden Spindles) **28th October** SD901661 Malham Lings - in rough grassland
- 10 *Clitocybe inornata* **17th November** SD889673 Tarn Woods - on soil amongst mosses under Beech
- 11 *Collybia butyracea* (Butter Cap) **10th October** SD889673 Tarn Woods - in leaf litter under Beech
- 12 *Collybia confluens* (Clustered Toughshank) **22nd August** SD889673 Tarn Woods - in leaf litter under Beech
- 13 *Coprinellus impatiens* **10th October** SD892673 Tarn Woods - in leaf litter under Beech
- 14 *Coprinellus micaceus* (Glistening Inkcap) **28th October** SD892671 Tarn Woods - on dead fallen timber, **23rd November** SD892673 Tarn Woods - on dead fallen timber
- 15 *Coprinellus radicans* **22nd October** SD892673 Tarn Close Meadow - at base of cut stump
- 16 *Cordyceps militaris* (Scarlet Caterpillarclub) **7th September** SD902654 Below Abbot Hills - in rough grassland
- 17 *Crepidotus applanatus* (Flat Oysterling) **16th August** SD889673 Tarn Woods - on larger fallen branches
- 18 *Cystoderma amianthinum* (Earthy Powdercap) **13th September** SD901661 Malham Lings - in rough grassland, **11th October** SD903653 Malham Lings - in rough grassland, **12th October** SD886672 East Fen amongst Molinea
- 19 *Diatrype disciformis* (Beech Barkspot) **17th November** SD890672 Tarn Woods - on fallen branches of Beech
- 20 *Entoloma bloxamii* (Big Blue Pinkgill) **28th October** SD903664 Great Close Scar - in calcareous grassland at far end of track
- 21 *Entoloma griseocyaneum* (Felted Pinkgill) **9th August** SD901661 Malham Lings - in rough calcareous grassland
- 22 *Entomophthora muscae* **20th June** SD897672 Below Highfolds
- 23 *Exidia recisa* **30th November** SD888672 Tarn Fen - on small branches of Willow
- 24 *Flammulina velutipes* (Velvet Shank) **23rd October** SD892673 Tarn Woods and Tarn

Arrhenia onisca



Flammulina velutipes



- Close on cut stumps of, chiefly, Ash
- 25 *Fuligo septica* (Slimemould) **5th September** SD888672 East Fen on Birch
 - 26 *Galerina paludosa* (Bog Bell) **4th July** SD887671 Tarn Fen - amongst Sphagnum
 - 27 *Galerina vittiformis* (Hairy Leg Bell) **29th August** SD889673 Tarn Woods - on moss covered rocks, **30th November** SD892673 Tarn Woods - at base of mossy tree trunks
 - 28 *Gymnopilus penetrans* (Common Rustgill) **8th November** SD890672 Tarn Woods - on fallen coniferous timber
 - 29 *Gymnopilus fuscopurpureus* **10th October** SD889673 Tarn Woods - in leaf litter under Beech (formerly known as *Collybia fuscopurpurea*)
 - 30 *Helvella lacunosa* (Elfin Saddle) **6th September** SD889673 Tarn Woods - in leaf litter under Beech
 - 31 *Helvella macropus* (Felt Saddle) **31st August** SD889673 Tarn Woods - in leaf litter under Beech
 - 32 *Hemimycena tortuosa* (Dewdrop Bonnet) **28th November** SD888673 By Sandhill Cottage - on mossy trunk of large Sycamore
 - 33 *Hydnum repandum* (Wood Hedgehog) **28th September** SD889673 Tarn Woods - under Beech at north end of woods
 - 34 *Hygrocybe coccinea* (Scarlet Waxcap) **22nd August** SD903652 Abbot Hills - in unimproved grassland, **31st August** SD902654 Malham Lings - in unimproved grassland, **7th September** SD902654 Malham Lings - in unimproved grassland
 - 35 *Hygrocybe conica* (Blackening Waxcap) **12th August** SD901661 Malham Lings - in unimproved grassland, **26th September** SD903652 Abbot Hills - in unimproved grassland
 - 36 *Hygrocybe miniata* (Vermilion Waxcap) **19th September** SD903652 Abbot Hills - in unimproved grassland
 - 37 *Hygrocybe persistens* (Persistent Waxcap) **28th October** SD902654 Malham Lings - in unimproved garssland
 - 38 *Hygrocybe pratensis* (Meadow Waxcap) **30th August** SD903652 Abbot Hills - in unimproved grassland
 - 39 *Hygrocybe psittacina* (Parrot Waxcap) **12th August** SD883690 Tennant Gill - in semi-improved grassland, **14th August** SD903652 Abbot Hills - in unimproved grassland, **30th August** SD902654 Malham Lings - in unimproved grassland
 - 40 *Hygrocybe punicea* (Crimson Waxcap) **30th August** SD903652 Abbot Hills - in unimproved grassland, **11th October** SD902654 Malham Lings - in unimproved grassland
 - 41 *Hygrocybe quieta* (Oily Waxcap) **31st August** SD903652 Abbot Hills - in unimproved grassland
 - 42 *Hygrocybe splendidissima* (Splendid Waxcap) **28th October** SD903652 Abbot Hills - in unimproved grassland
 - 43 *Hygrocybe virginea* (Snowy Waxcap) **22nd August** SD901661 Malham Lings - in unimproved grassland, **31st August** SD902654 Malham Lings - in unimproved grassland
 - 44 *Hygrocybe vitellina* **3rd October** SD886672 Tarn Fen amongst Molinea
 - 45 *Hymenoscyphus* sp. **10th October** SD892673 Tarn Woods on twig under Sycamore, Beech & Ash
 - 46 *Hypholoma capnoides* (Conifer Tuft) **9th October** SD886672 Tarn Fen on cut logs used on boardwalk, **5th December** SD895671 East Drive - on cut logs by Sewage Plant
 - 47 *Hypholoma fasciculare* (Sulphur Tuft) **20th August** SD889673 Tarn Woods - on dead remains of deciduous trees
 - 48 *Hypoxylon fragiforme* (Beech Woodwart) **13th October** SD890672 Tarn Woods - on fallen and felled Beech
 - 49 *Inocybe lanuginosa* var. *lanuginosa* **7th August** SD887671 East Fen - on decaying wood in Sphagnum under Birch
 - 50 *Inonotus radiatus* (Alder Bracket) **13th October** SD892671 Tarn Woods growing on Beech
 - 51 *Ischnoderma resinsum* (Resinous Bracket) **24th January** SD895671 Tarn Woods - on large fallen Beech trunk above East Drive
 - 52 *Laccaria amethystina* (Amethyst Deceiver) **22nd August** SD890672 Tarn Woods - in leaf litter under Beech

Helvella lacunosa



Hygrocybe splendidissima



- 53 *Laccaria laccata* (Deceiver) **12th October** SD887671 East Fen - amongst mosses under Birch, **21st October** SD889673 Tarn Woods - in leaf litter
- 54 *Lactarius blennius* (Beech Milkcap) **29th August** SD889673 Tarn Woods - under Beech at north end of woods
- 55 *Lactarius subdulcis* (Mild Milkcap) **26th September** SD889673 Tarn Woods - under Beech at north end of woods
- 56 *Lactarius tabidus* (Birch Milkcap) **7th August** SD887671 Tarn Fen - under Birch, **8th August** SD887671 Tarn Fen - under Birch
- 57 *Lactarius torminosus* (Woolly Milkcap) **3rd October** SD888672 East Fen just below Sandhill Cottage - at base of birch
- 58 *Lactarius vietus* (Grey Milkcap) **19th September** SD886672 Tarn Fen - under Birch
- 59 *Leotia lubrica* (Jellybaby) **6th September** SD889673 Tarn Woods - under Beech
- 60 *Lycogala terrestre* (Slimemould) **13th October** SD892671 Tarn Woods, **21st October** SD892671 Tarn Woods
- 61 *Lycoperdon perlatum* (Common Puffball) **7th September** SD892671 Tarn Woods
- 62 *Marasmius* sp. **12 August** SD897671 East Drive - on twigs under Yew
- 63 *Melanotus horizontalis* (Wood Oysterling) **30th November** SD892671 Tarn Woods - on cut face of Beech log
- 64 *Mycena arcangeliana* (Angel's Bonnet) **26th September** SD889673 Tarn Woods - on dead and decaying remains of deciduous trees
- 65 *Mycena epipterygia* (Yellowleg Bonnet) **12th October** SD887671 Tarn Fen - amongst mosses, **22nd November** SD888673 By Sandhill Cottage - on moss covered trunk of Sycamore
- 66 *Mycena galericulata* (Common Bonnet) **22nd October** SD889673 Tarn Woods - on large logs or stumps of deciduous trees
- 67 *Mycena haematopus* (Burgundydrop Bonnet) **16th August** SD889673 Tarn Woods - on large logs or stumps of deciduous trees
Mycena haematopus (Burgundydrop Bonnet) **20th August** SD889673 Tarn Woods - on large logs or stumps of deciduous trees
- 68 *Mycena mirata* **17th November** SD888673 Tarn Woods - amongst mosses on Sycamore tree
- 69 *Mycena rosea* (Rosy Bonnet) **16th August** SD889673 Tarn Woods - under Beech at north end of woods, **4th September** SD889673 Tarn Woods - under Beech at north end of woods, **26th September** SD889673 Tarn Woods - under Beech at north end of woods
- 70 *Mycena speirea* (Bark Bonnet) **6th December** SD888673 By Sandhill Cottage - on mossy trunk of large Sycamore
- 71 *Otidea alutacea* (Tan Ear) **6th September** SD889673 Tarn Woods - in leaf litter under Beech
- 72 *Oudemansiella mucida* (Porcelain Fungus) **26th September** SD892671 Tarn Woods - on large fallen branches of Beech
- 73 *Panaeolus papilionaceus* (Petticoat Mottlegill) **9th August** SD902654 Malham Lings - on cow dung
- 74 *Panellus mitis* (Elastic Oysterling) **8th November** SD890672 Tarn Woods - on fallen twigs and branches of Larch
- 75 *Paxillus involutus* (Brown Rollrim) **9th October** SD887671 Tarn Fen - under Birch
- 76 *Phlebia radiata* (Wrinkled Crust) **21st October** SD895671 Tarn House Meadow - on cut stump by Tarn Shore
- 77 *Pluteus cervinus* (Deer Shield) **16th August** SD890672 Tarn Woods - under Beech on decaying wood
- 78 *Polyporus leptoccephalus* (Blackfoot Polypore) **16th August** SD892671 Tarn Woods - on dead and decaying deciduous trees
- 79 *Postia caesia* (Conifer Blueing Bracket) **10th October** SD890672 Tarn Woods - on dead and decaying Larch trees
- 80 *Postia subcaesia* (Blueing Bracket) **16th**

Lactarius vietus



Panellus mitis



- August** SD889673 Tarn Woods - on dead and decaying deciduous trees, **17th November** SD889673 Tarn Woods - on dead and decaying deciduous trees
- 81 *Postia tephroleuca* (Greyling Bracket) **13th September** SD889673 Tarn Woods - decaying trunk of large Beech tree
- 82 *Psathyrella cernua* **13th October** SD892671 Tarn Woods - on dead wood at base of old Beech tree
- 83 *Puccinia poarum* (Meadow Grass Rust) **21st June** SD895671 Tarn House Meadow - on Coltsfoot by Tarn Shore
- 84 *Russula claroflava* (Yellow Swamp Brittlepill) **7th August** SD887671 Tarn Fen - under Birch
- 85 *Russula cyanoxantha* (Charcoal Burner) **22nd August** SD889673 Tarn Woods - under Beech at north end of woods
- 86 *Russula emetica* var *betularum* (Birch Brittlepill) **7th August** SD887671 Tarn Fen - in Sphagnum under Birch
- 87 *Russula nitida* (Purple Swamp Brittlepill) **7th August** SD887671 Tarn Fen - in Sphagnum under Birch
- 88 *Russula nobilis* (*mairei*) (Beechwood Sickener) **6th September** SD890672 Tarn Woods - under Beech at north end of woods
- 89 *Russula robertii* (*sphagnophila*) **8th August** SD887671 Tarn Fen - in Sphagnum under Birch
- 90 *Scutellinia scutellata* (Common Eyelash) **6th September** SD886672 Tarn Fen on dead, rotten, wet wood alongside boardwalk
- 91 *Scutellinia patagonica* **27th September** SD879686 Knowe Fell - in muddy grass alongside path from Tennant Gill to Henside (the first record for Yorkshire and possibly for England, thanks to Chris Yeates for identifying this one)
- 92 *Suillus grevillei* (Larch Bolete) **20th August** SD890672 Tarn Woods - at base of large Larch tree
- 93 *Tarzetta catinus* **16th August** SD890672 Tarn Woods - in leaf litter under Beech at north end of woods
- 94 *Trametes versicolor* (Turkeytail) **9th October** SD890672 Tarn Fen - on Birch, **23rd November** SD890672 Tarn Woods - on Beech and Sycamore and other dead deciduous wood
- 95 *Tremella foliacea* (Leafy Brain) **30th November** SD886672 Tarn Fen - on Birch and Willow
- 96 *Tricholoma ustale* (Burnt Knight) **29th August** SD893672 Tarn Wood alongside track to High Stables - under Beech
- 97 *Triphragmium ulmariae* (Meadowsweet Rust) **22nd June** SD893670 West Fen - on Meadowsweet
- 98 *Tubaria furfuracea* (Scurfy Twiglet) **25th January** SD890672 Pot Hole Lane - on dead branch on Hawthorn, **12th October** SD893672 Tarn Woods on fallen deciduous twigs and branches, **22nd November** SD893672 Tarn Woods on fallen deciduous twigs and branches
- 99 *Velutaria rufo-olivacea* **26th February** SD890672 Tarn Woods - on dead Ash twig
- 100 *Xerula radicata* (Rooting Shank) **16th August** SD890672 Tarn Woods - on dead wood in soil under Beech
- 101 *Xylaria hypoxylon* (Candlesnuff Fungus) **28th October** SD890672 Tarn Woods - on debris from deciduous trees
- 102 *Xylaria longipes* (Dead Moll's Fingers) **11th October** SD890672 Tarn Woods - on fallen wood of deciduous trees, **21st October** SD892671 Tarn Woods - on fallen wood of deciduous trees
- 103 *Xylaria polymorpha* (Dead Man's Fingers) **13th October** SD893672 Tarn Woods - on fallen wood of deciduous trees

Scutellinia patagonica



Tricholoma ustale



2010 Weather Report January - April

January Summary			Mean for period 1961 -1990
Warmest Day	11 Jan	7.8 °C	
Average Maximum		3.8 °C	3.6 °C
Coldest Day	1 Jan	-8.9 °C	
Average Minimum		-0.8 °C	-0.9 °C
Days with Air Frost		18 days	18 days
Wettest Day	21 Jan	33.6 mm	
Total Rain for Month		143.2 mm	154 mm
Days with > 1mm Rain		18 days	18 days
Sunniest Day	28 Jan	5.2 hours	
Total Sunshine		23.7 hours	35.3 hours

January felt cold but in fact was probably the closest month of the whole year to the average for the standard 1961 – 1990 period. We have got used to warmer winters and a return to a winter “like they used to be” was a bit of a shock. The cold weather that ended December 2008 continued into the New Year with night-time temperatures well below zero and daytime temperatures barely above freezing. January 1st was the coldest day of the whole year when the minimum air temperature fell to - 8.9°C. This cold spell ended with a fall of snow at the end of the first week of January and it then became milder for ten days or so before more snow arrived at the beginning of the third week of January.

February Summary			Mean for period 1961 -1990
Warmest Day	17 Feb	10.0 °C	
Average Maximum		4.3 °C	3.4 °C
Coldest Day	8 Feb	-7.0 °C	
Average Minimum		-0.4 °C	-1.1 °C
Days with Air Frost		15 days	17.3 days
Wettest Day	26 Feb	16.2 mm	
Total Rain for Month		41.3 mm	103.6 mm
Days with > 1mm Rain		8 days	13 days
Sunniest Day	6 Feb	7.2 hours	
Total Sunshine		38.8 hours	58.5 hours

February began with heavy snow; over 30cm of snow was recorded lying on the ground on the 3rd of the month. This amount of snow severely disrupted travel up on Malham Moor and led to the postponement of visits by several groups at the Field Centre. This snow persisted for a couple of weeks being topped up by further falls around the 9th and 10th. Despite the snow the month was actually slightly warmer than the long term average and much drier than usual with less than half the normal rainfall, February 2009 was the eighth driest February we have ever recorded.

March Summary			Mean for period 1961 -1990
Warmest Day	21 Mar	13.0 °C	
Average Maximum		7.6 °C	5.7 °C
Coldest Day	29 Mar	-4.1 °C	
Average Minimum		1.4 °C	0 °C
Days with Air Frost		6 days	15.2 days
Wettest Day	24 Mar	13.1 mm	
Total Rain for Month		90.1 mm	125.6 mm
Days with > 1mm Rain		13 days	15.8 days
Sunniest Day	18 Mar	9.5 hours	
Total Sunshine		117.6 hours	85.3 hours

March was also warmer than average with less than half the usual rainfall and more sunshine. Most of the rain fell in two short periods: the 7th – 11th when 33mm fell and a very similar amount fell during the period 24th – 27th. The wettest day only produced 13.1mm of rain which is a very low figure for March. In between the rainy spells there were a number of pleasantly warm and sunny early spring days. The 18th had 9.5 hours of sunshine with light southerly winds and reached a temperature of 12.8°C. Temperatures then stayed in double figures until the 21st.

April Summary			Mean for period 1961 -1990
Warmest Day	20 Apr	15.7 °C	
Average Maximum		11.4 °C	8.7 °C
Coldest Day	3 Apr	-0.2 °C	
Average Minimum		3.3 °C	1.8 °C
Days with Air Frost		1 day	7.3 days
Wettest Day	28 Apr	19.9 mm	
Total Rain for Month		64.0 mm	90.5 mm
Days with > 1mm Rain		10 days	13.3 days
Sunniest Day	12 Apr	11.6 hours	
Total Sunshine		148.4 hours	120.3 hours

April was another warm, relatively dry and sunny month. Most of the rain fell in two periods 6th – 10th with 19mm of rain and 26th – 30th with 43mm. In between there was lots of sunshine and temperatures were well above the average. The warmest day was the 20th when temperatures reached 15.7°C still 5.3°C lower than the warmest ever April day, 30th April 1990, when the maximum

temperature reached 21.0°C.

2010 Weather Report May - August

May Summary			Mean for period 1961 -1990
Warmest Day	29 May	20.5 °C	
Average Maximum		12.5 °C	12.3 °C
Coldest Day	12 May	2.6 °C	
Average Minimum		5.6 °C	4.6 °C
Days with Air Frost		0 days	1.2 days
Wettest Day	20 May	13.6 mm	
Total Rain for Month		119.6 mm	92.3 mm
Days with > 1mm Rain		22 days	13.5 days
Sunniest Day	30 May	13.5 hours	
Total Sunshine		153.3 hours	163.4 hours

May was close to average in terms of temperature with slightly more rain and slightly less sunshine than usual. The wet weather that had set-in in late April carried on through the first three weeks or so of May. Rain fell on 22 days of the month but the daily amount was generally fairly small – most days had a little bit of rain and the total for the month was only 27mm more than usual. Temperatures were at or slightly below the norm for most of the month. In the final week a warmer, drier spell set-in with the last four days in particular being very pleasantly warm and dry.

June Summary			Mean for period 1961 -1990
Warmest Day	23 Jun	23.5 °C	
Average Maximum		16.5 °C	15.1 °C
Coldest Day	6 Jun	2.2 °C	
Average Minimum		8.7 °C	7.6 °C
Days with Air Frost		0 days	0.10 days
Wettest Day	5 Jun	19.2 mm	
Total Rain for Month		53.3 mm	93.7 mm
Days with > 1mm Rain		8 days	13.1
Sunniest Day	24 Jun	13.5 hours	
Total Sunshine		163.6 hours	151.5 hours

June started warm and dry and stayed like that for much of the month. We had just over half of the usual rainfall and most of that fell on just three days; 5th (19.2mm), 10th (6.1mm) and 17th (13.5mm), and there were only eight rain days (where rainfall exceeds 1mm). June 2009 ended up as being the eighth driest we have recorded. As a consequence of this dry, and sunny, weather temperatures were nicely warm. The warmest day was on the 23rd when we recorded 23.5°C - number 19 in the top twenty of our warmest ever June days.

July Summary			Mean for period 1961 -1990
Warmest Day	1 Jul	25.3 °C	
Average Maximum		16.6 °C	16.5 °C
Coldest Day	11 Jul	5.7 °C	
Average Minimum		10.4 °C	9.2 °C
Days with Air Frost		0 days	0 days
Wettest Day	17 Jul	31.5 mm	
Total Rain for Month		204.4 mm	100.3 mm
Days with > 1mm Rain		23 days	13 days
Sunniest Day	2 Jul	9.7 hours	
Total Sunshine		128.7 hours	136.4 hours

July Overall the month was near average except for rainfall. The first two days were hot (we recorded 25.3°C on the 1st and 23.6°C on the 2nd). The rest of the month was cooler and wet. Temperatures didn't get above 20°C for the rest of the month and, with more than 200mm, we had nearly twice the usual rainfall and in all there were only eight dry days (< 1mm of rain). This was the third wettest July ever. In the last decade we have recorded four of the five wettest July's ever (2009 - 3rd, 2008 - 4th, 2007 - 2nd and 2002 - 5th).

August Summary			Mean for period 1961 -1990
Warmest Day	19 Aug	20.4 °C	
Average Maximum		16.6 °C	16.1 °C
Coldest Day	28 Aug	7.5 °C	
Average Minimum		10.4 °C	9.3 °C
Days with Air Frost		0 days	0 days
Wettest Day	31 Aug	20.5 mm	
Total Rain for Month		139.2 mm	130.8 mm
Days with > 1mm Rain		21 days	14.7 days
Sunniest Day	7 Aug	12.6 hours	
Total Sunshine		104.1 hours	142.6 hours

August in 2008 had been the second wettest ever and after a wet July this year we held our breath. It turned out to be near average in terms of temperature and rainfall but had less sunshine and rather more rain-days (>1mm of rain) than we might expect. Almost three-quarters of the rainfall fell in the last ten days. Temperatures were disappointingly low. We only had one day when the maximum temperature (20.4°C) exceeded 20°C and that figure fell well below the best ever value of 28.5°C reached on 3rd August 1990.

2010 Weather Report September – December

September Summary			Mean for period 1961 -1990
Warmest Day	10 Sep	22.3 °C	
Average Maximum		14.2 °C	13.8 °C
Coldest Day	9 Sep	4.1 °C	
Average Minimum		8.3 °C	7.6 °C
Days with Air Frost		0 days	0 days
Wettest Day	2 Sep	32.7 mm	
Total Rain for Month		68.6 mm	138.8 mm
Days with > 1mm Rain		10 days	14.5 days
Sunniest Day	9 Sep	10.6 hours	
Total Sunshine		85.7 hours	100.8 hours

October Summary			Mean for period 1961 -1990
Warmest Day	15 Oct	15.4 °C	
Average Maximum		12.0 °C	10.6 °C
Coldest Day	7 Oct	2.3 °C	
Average Minimum		6.0 °C	5.2 °C
Days with Air Frost		0 days	1.2 days
Wettest Day	24 Oct	19.2 mm	
Total Rain for Month		128.3 mm	150.8 mm
Days with > 1mm Rain		17 days	16.4 days
Sunniest Day	11 Oct	7.7 hours	
Total Sunshine		58.7 hours	80.0 hours

November Summary			Mean for period 1961 -1990
Warmest Day	1 Nov	12.2 °C	
Average Maximum		8.0 °C	6.5 °C
Coldest Day	30 Nov	0.5 °C	
Average Minimum		3.7 °C	1.2 °C
Days with Air Frost		0 days	8.8 days
Wettest Day	17 Nov	31.8 mm	
Total Rain for Month		378.9 mm	149.9 mm
Days with > 1mm Rain		27 days	17.1 days
Sunniest Day	9 Nov	6.7 hours	
Total Sunshine		28.9 hours	54.9 hours

December Summary			Mean for period 1961 -1990
Warmest Day	5 Dec	8.8 °C	
Average Maximum		3.4 °C	4.6 °C
Coldest Day	19 Dec	-8.5 °C	
Average Minimum		-1.1 °C	-0.1 °C
Days with Air Frost		19 days	15 days
Wettest Day	5 Dec	23.0 mm	
Total Rain for Month		123.6 mm	162.0 mm
Days with > 1mm Rain		16 days	17.5 days
Sunniest Day	10 Dec	4.6 hours	
Total Sunshine		26.6 hours	37.5 hours

September was, thankfully, quite a good month. Temperatures were just above average, rainfall at 68.6mm was just under half of what we might expect but there was, once again, slightly less than average sunshine. The warmest day was the 10th at 22.3°C and there were several other days when the temperature neared the 20°C mark. Most of the rainfall (55mm) fell within the first week with 32.7mm on the 2nd being one of the heavier rainfall events of the whole year (heaviest was Jan 21st with 33.6mm). The rest of the month was then largely dry. No air frosts were recorded but the first ground frost of the year occurred on the 20th when it reached -0.6°C. No other frosts were recorded all month.

October pretty much followed in the same pattern. Temperatures above average, slightly less rainfall than the norm but less sunshine too. Most of the rainfall fell in two periods, there was 33mm between the 1st and 6th and 63mm in the last week of the month. In between there were odd wet days but most days were dry but with little sunshine, especially towards the end of the month. Between the 13th October and the end of the month there were only 15.6 hours of sunshine in total.

November goes into the records as the wettest month ever recorded at Malham Tarn. The total of 378.9mm is the highest recorded for any month since we started recording data in 1959. Rain (>1mm) fell on 27 days of the month. In the last fifty years there have only been 10 occasions when the total monthly rainfall has exceed 300mm and of those five have been in the last ten years (Nov 2009-378.9mm, Feb 2002-364.1mm, Oct 2000-328.9mm, Jan 2008-320.8mm and Dec 1999-300.7mm). Despite being wet the month was once again slightly warmer than average and there were no recorded air frosts. Ground frost were noted on a few days between the 5th and 11th.

December started with a couple of cold days with the first air frost of the autumn/winter recorded on the 1st and 2nd. There was then a fairly mild spell until the 17th when we had our first snow of the winter. Temperatures barely rose above freezing for the rest of the month. The snow that had fallen on the 17th was topped up by further falls

and remained on the ground to the year-end. The Tarn froze over completely for the last two weeks of the year and travel on Malham Moor became difficult with deep drifts developing on windy days.

Records

Temperature

Warmest Day
Coldest Day
Warmest Month
Coldest Month
Lowest Grass Temp.

Rainfall

Wettest Day
Wettest Month
Driest Month
Total Rainfall for Year

Sunshine

Sunniest Day
Sunniest Month
Least Sunny Month

2009	
Date	Amount
1st July	25.3°C
1st January	-8.9 °C
July & August	16.6 °C
December	-1.1 °C
6th January	-11.8 °C
21st January	33.6 mm (1.3 in)
November	378.9 mm (14.9 in)
February	41.3 mm (1.6 in)
	1554.2 mm (61.2 in)
30th May & 24th June	13.5 hours
June	163.6 hours
January	23.7 hours

Ever (1959 - 2008)	
Date	Amount
3rd Aug. 1990	28.2 °C
5th Mar. 2001	-13.5 °C
Jul. 2006	21.9 °C
Feb. 1986	- 5.6 °C
5th Mar. 2001	-20.1 °C
31st Jan. 2002	135.4 mm (5.3 in)
Feb. 2002	364.1 mm (14.3 in)
Jan/Feb 1979	No Rain
2000 (Wettest)	2097.9 mm (82.6 in)
1975 (Driest)	1124.5 mm (44.27 in)
7th May 1985	15.7 hours
Jul. 2006	257.5 hours
Jan. 1997	No Sun

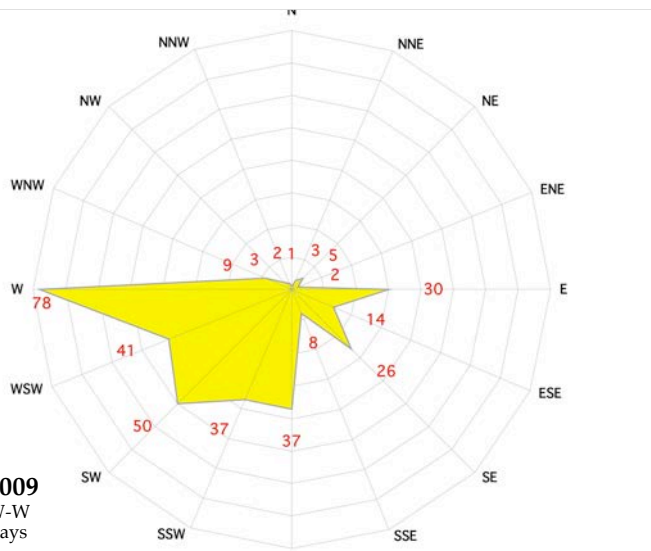
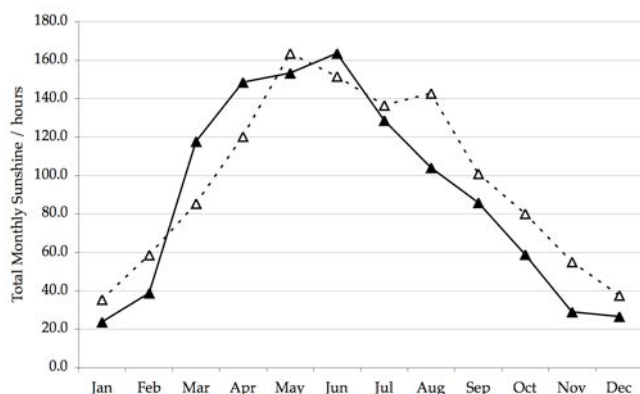
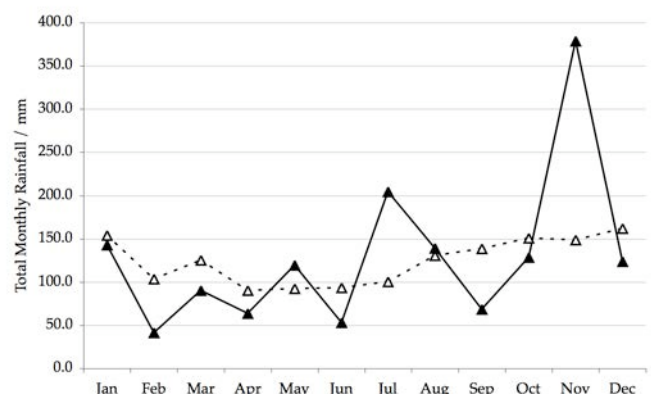
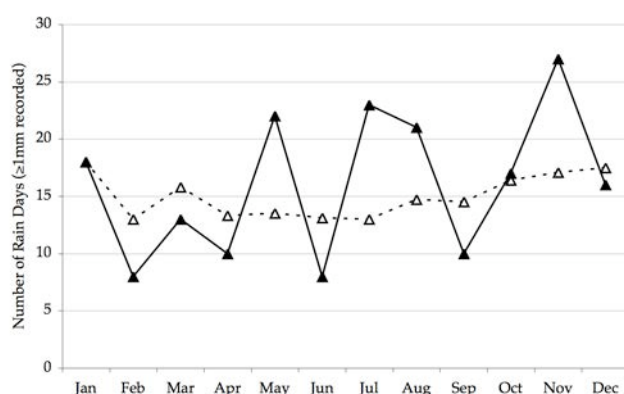
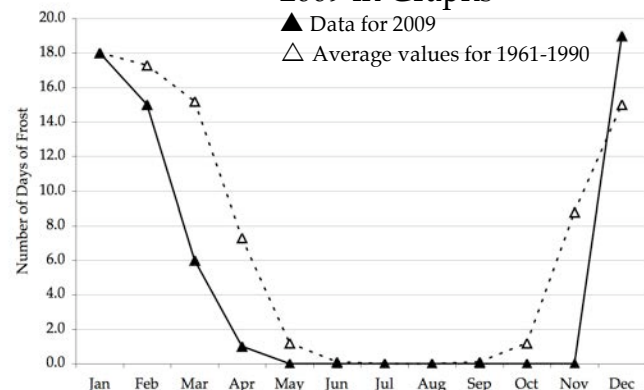
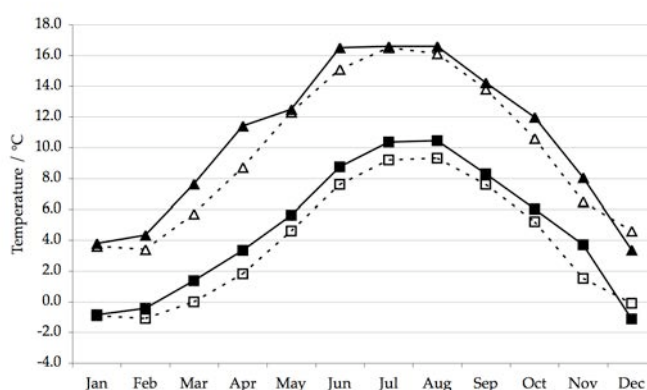
Notes

Highest air temperature recorded
Lowest air temperature recorded
Highest Average Maximum reading
Lowest Average Minimum reading

Nov. 2009 was the wettest month ever recorded

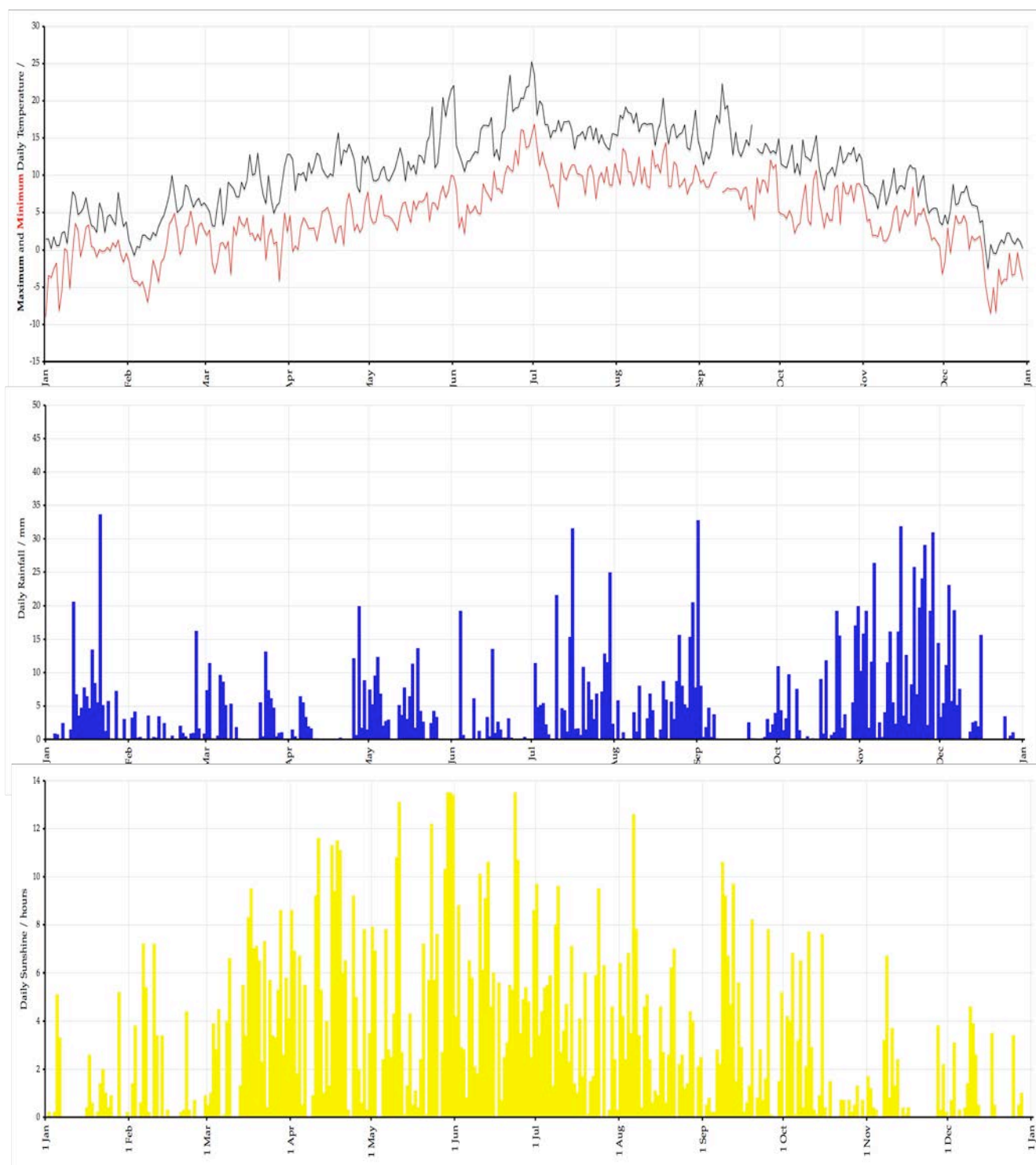
2009 in Graphs

▲ Data for 2009
△ Average values for 1961-1990



Wind Rose for 2009

Winds come from a SW-W direction on c50% of days



Malham Tarn Field Centre

Malham Tarn Field Centre is one of 17 centres run by the Field Studies Council – the leading provider of environmental education in the country. It has been helping students of ecology, heritage and landscape explore the environment around the Tarn since 1947. Visitors to the Centre cover the whole range from pre-school day visits to retired adults on leisure learning courses. Our Leisure Learning Courses run throughout the year and are led by expert tutors. If you want to find out more about the area around Malham Tarn then why not book on one of our courses? To contact the Centre: Phone **01729 830331** or write to us at: **Malham Tarn Field Centre, Settle, North Yorkshire, BD24 9PU**. More details about our courses are also on our website www.field-studies-council.org.



Malham Tarn Field Centre
 Settle, North Yorkshire. BD24 9PU
 Tel: 01729 830331 Fax: 01729 830658
 Email: enquiries.mt@field-studies-council.org Web site:
www.field-studies-council.org

The cost of producing this report is supported by the:
James Reckitt Charity

