

Malham Tarn

Wildlife & Weather Report

2008



Brian Shorrock

Robin Sutton

FSC

BRINGING
ENVIRONMENTAL
UNDERSTANDING TO ALL

Malham Tarn Field Centre
Settle, North Yorkshire BD24 9PU
Tel: 01729 830331



THE
NATIONAL
TRUST

2008 Wildlife Report – A Summary

A second successive poor summer further depleted Butterfly and Dragonfly numbers only Ringlet seemed to do well. Some species were not recorded at all this year albeit most are normally very small populations anyway, Comma, Brimstone, Small Copper and Painted Lady missing out. A gale on mid-summers day was typical of the summer weather. Birds also suffered, many leaving earlier than usual and rearing very few if any young. Once again wildfowl did badly, Great-crested Grebe, Tufted Duck and Coot in particular, why wildfowl should be so badly affected is difficult to say, fluctuating water levels and strong winds will not have helped.

Bird boxes erected by the National Trust on Tarn Estate have been a huge success even when in some-cases they had only been erected in March and April, Blue Tit, Great Tit and Nuthatch all breeding successfully in them.

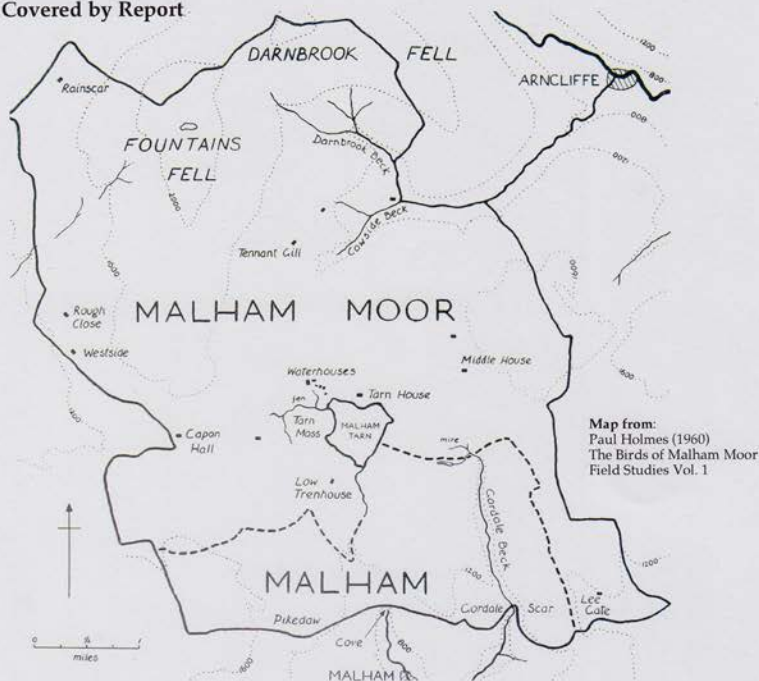
No new bird species were added to the list in 2008 but a Banded Demoiselle was new for the area. Potentially there are still plenty of bird species that could be recorded in the Tarn area such as Black-throated Diver, Great Northern Diver, Long-tailed Duck, Temminck Stint, Little Stint, Glaucous and Iceland Gull so plenty to chose from.

I would like to thank the following for contributions towards the report particularly co-editor Robin Sutton, thanks to Tony Bullough, Roger Clark, Ian Court, Martin Davies, David Hodgson, Richard Humpage, Dr. Martin Holmes, Gerald and Jo Light, Denis Lord, Keith Mudd, Richard Mann, Stuart Ralph, Adrian Pickles, Jacqueline Stevens, Paul and Elaine Davies and Colin Straker – apologies for any omissions.

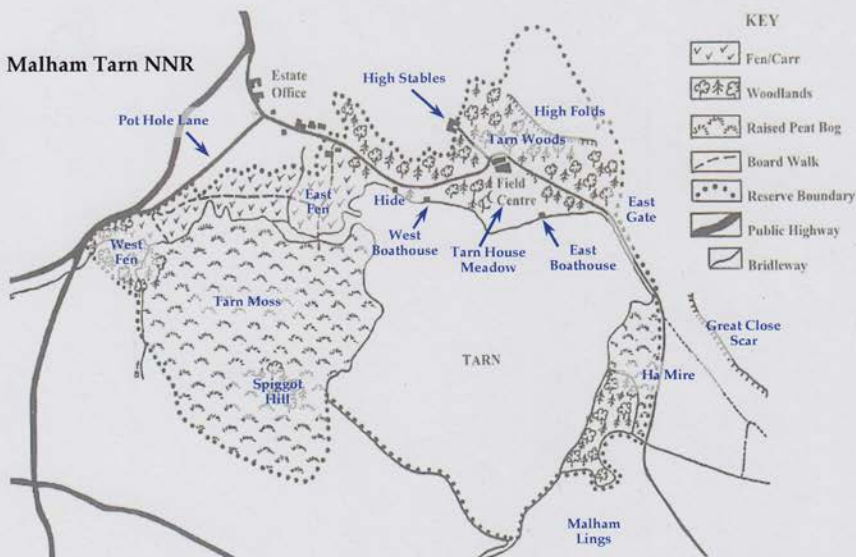
Brian Shorrock

January 2009

Area Covered by Report



Malham Tarn NNR



Birds Records 2006

- 1 **Little Grebe** *Tachybaptus ruficollis* Present throughout year on Tarn. Two or three pairs attempted to breed, one pair in East Bay raising at least three young. Peak count was thirteen on 25th August, a lower count than normal.

- 2 **Great Crested Grebe** *Podiceps cristatus* No more than one or two during winter months, birds began to arrive back in March with eight present by 31st. Numerous breeding attempts were made but only one pair managed to raise one young, a performance even worse than last year. Peak count in year was only fourteen on 25th April.

- 3 **Cormorant** *Phalacrocorax carbo* Single birds on the Tarn on the following dates: 3rd January, 7th, 13th, 18th, 19th and 31st March, 1st, 8th, 10th & 19th of April, 3rd May, 5th August, 7th September, 6th October, 7th, 12th, 16th, 21st and 27th November.



Grey Heron

- 4 **Grey Heron** *Ardea cinerea* Recorded in all months, normally single birds with two on a few occasions, usually frequenting the Fen or outflow stream from Tarn.

- 5 **Whooper Swan** *Cygnus cygnus* Only one record, ten birds on the Tarn for a short period 14th September.

- 6 **Pink-footed Goose** *Anser brachyrhynchus* One South Shore of Tarn on the unusual date 3rd June was the only early record. In autumn two flocks were noted flying south-east over Tarn, c100 28th September and c40 3rd October – presumably Icelandic birds heading for their Lancashire wintering grounds.

- 7 **Greylag Goose** *Anser anser* Up to nine birds irregularly present on or near Tarn 18th February to 13th July. A pair probably made a nest on Tarn Moss but no eggs laid, two late records, one 30th October and two 27th November.



Canada Goose

- 8 **Canada Goose** *Branta canadensis* Numbers continue to increase, the 210 in July the highest ever. One or two pairs attempted to breed on Tarn Moss, both nests were controlled, ie eggs pricked. Monthly peak counts:

Jan	Feb	Mar	Apr	May	Jun	Jul	Aug	Sep	Oct	Nov	Dec
0	2	10	7	60	200	210	9	80	24	20	0

- 9 **Shelduck** *Tadorna tadorna* Two on the Tarn 20th May and one in flight heading west over Tarn Moss on 10th July.

- 10 **Mallard** *Anas platyrhynchos* Two broods of five and nine in May on the Tarn, the majority of these reaching the flying stage. Recorded in all months, maximum counts were fifty 23rd June and 100+ 13th July.

- 11 **Shoveler** *Anas clypeata* Just one record of a pair on the Tarn for the day only 29th April.

- 12 **Wigeon** *Anas penelope* Up to a hundred birds present in the early months, last seen on 21st April. Three returned 8th August building up to sixty by 7th November.

- 13 **Teal** *Anas crecca* Recorded in Tarn area January to 28th June, a male on the latter date suggestive of a breeding attempt in the vicinity, possibly on Tarn Moss, but no young seen. Peak count in early months was 22 on 18th February. One returned 8th August with no more than twelve to year end.
- 14 **Pochard** *Aythya farina* 250 Maximum count 16th January, reducing gradually to a pair on 18th March. Up to seven males in June, ten males 3rd July and numbers then built up to a peak of thirty by 21st November, a much lower total than usual.
- 15 **Tufted Duck** *Aythya fuligula* Recorded on Tarn in all months, maximum count in year eighty on 28th June. Like last year, another bad breeding season, one pair raising three young. This brood not appearing on Tarn until 21st July.
- 16 **Common Scoter** *Melanitta nigra* A pair on the Tarn 31st March with four here 31st May.
- 17 **Goldeneye** *Bucephala clangula* Present on Tarn January to 1st May, peak counts in early part of year fifteen on 16th January and eighteen 10th April. One returned on 17th October and numbers rose to sixteen by end of year.
- 18 **Goosander** *Mergus merganser* A pair irregularly on Tarn January to 8th April, presumably a local breeding pair. Five redheads 25th August and two redheads 7th September. A pair on Tarn 27th December and irregularly to year end.
- 19 **Ruddy Duck** *Oxyura jamaicensis* A male in full breeding plumage on 5th August the only record.
- 20 **Hen Harrier** *Circus cyaneus* Just two records of single birds, over Highfolds 7th April and near Low Trenhouse 29th June.

Harris Hawk



Harris Hawk *Parabuteo unicinctus* One between Capon Hall and Malham Tarn Estate from at least 15th April to 3rd October, an escaped falconers bird wearing bells and jesses.

- 21 **Buzzard** *Buteo buteo* Sightings were well down on last years, nevertheless one pair attempted to breed again, outcome unknown, but an agitated bird at the site 13th June. Monthly sightings as follows:

Jan	Feb	Mar	Apr	May	Jun	Jul	Aug	Sep	Oct	Nov	Dec
0	1	0	0	1	2	0	1	1	2	2	1

- 22 **Sparrowhawk** *Accipiter nisus* Like 2007 little was seen of this species and no obvious breeding attempt. The only records were of single birds on 9th, 11th, 12th and 13th February. 6th April, 7th September and 13th October.
- 23 **Kestrel** *Falco tinnunculus* One pair bred successfully on Great Close Scar, with a probable pair at Darnbrook, recorded in all months with most sightings in April with seven and in August and October with six.
- 24 **Peregrine Falcon** *Falco peregrinus* Two pairs bred successfully on the edge of the Tarn recording area. In spite of this sightings were not that frequent, most were in March with three and August with four.
- 25 **Hobby** *Falco subuteo* One flew south-east over Ha Mire 14th June, a day in which hundreds of

hundreds of Hobby falcons were recorded over the Tarn

hundreds of Hobby falcons were recorded over the Tarn

hundreds of Hobby falcons were recorded over the Tarn

hundreds of Hobby falcons were recorded over the Tarn

hundreds of Hobby falcons were recorded over the Tarn

- 27 **Red Grouse** *Lagopus lagopus* Recorded from the usual sites, up to twelve birds near Dalehead in March with five here 10th September. Ten above Darnbrook 11th February and two on summit plateau of Fountains Fell 23rd May.
- 28 **Red-legged Partridge** *Alectoris rufa* One or two pairs present in the area around Great Close Scar, Round Wood and Ha Mire in the period 29th March to 4th July with no signs of any breeding success. The only other record was a dead bird on the road near Henside 22nd April.
- 29 **Grey Partridge** *Perdix perdix* Only two records, three near Rough Close 1st January and a pair on Chapel Fell 18th May.
- 30 **Common Pheasant** *Phasianus colchicus* Only two broods were seen this year; in Ha Mire Wood on 31st July and near Waterhouses 6th August. Peak counts were all in early part of year with twenty 9th February and twenty-five 24th March.

- 31 **Moorhen** *Gallinula chloropus* Present throughout year with at least four pairs with no sign of any breeding success. Mainly confined to Tarn and Tarn Fen but probably also tried to breed at High Trenhouse ponds, one or two birds here on 30th August. Peak count in year was only five on 4th March.



- 32 **Coot** *Fulica atra* Maximum count in early months was 450 on 6th January. At least six pairs attempted to breed but all failed. Peak count in later months was 300 on 6th October.

Coot

- 33 **Oystercatcher** *Haematopus ostralegus* One arrived back on 9th February with eight present by 14th March. One pair bred successfully near Thoragill and one near Great Close Scar / Other pairs were near Rainscar, near Globe Flower Wood, south shore of Tarn and below Tarn Outflow. Last seen on 10th August.
- 34 **Ringed Plover** *Charadrius hiaticula* A good spring passage with up to five birds near Tarn Outflow in period 1st April to 24th May. It is just possible that a breeding attempt was made as a single bird or birds were seen near Tarn on 6th and 16th June.
- 35 **Golden Plover** *Pluvialis apricaria* Two near Tarn 9th February were first of year. One back on Fountains Fell breeding site 11th February with a pair here 23rd May. A flock of 110 was present near Dalehead from 7th March to 15th April, most if not all were Northern Race birds (*altifrons*). Two over Tarn on 30th August were last sighting in year.
- 36 **Lapwing** *Vanellus vanellus* Present around Tarn from 2nd January to 10th November. Early pre-breeding flocks were sixteen near Dalehead 9th February, eighty near Tarn 13th February and twenty-five near Darnbrook 19th February. Four pairs attempted to breed below Tarn Outflow, only two or three young fledging successfully.
- 37 **Turnstone** *Arenaria interpres* One near Tarn Outflow in breeding plumage on 28th April.
- 38 **Dunlin** *Calidris alpina* Birds were present at Tarn Outflow from 27th March to 7th July with a peak count of eight on 28th April. As usual "trilling" and displaying were observed but again no definite proof of breeding.
- 39 **Common Sandpiper** *Actitis hypoleucos* This species is now on the verge of being extinct as a breeding bird around the Tarn where formerly six pairs bred. The only records were of single birds on 22nd April and 23rd June with three on 29th June.
- 40 **Redshank** *Tringa totanus* One returned early on 28th February. Only three pairs located, one pair Great Close Pools and two pairs Tarn Outflow, a pair here with young on 3rd July, last recorded on 7th September.
- 41 **Greenshank** *Tringa nebularia* Rare on spring passage, so one at Tarn Outflow 16th May was a noteworthy record.

- 42 **Curlew** *Numenius arquata* Recorded 10th February to 8th August. Bred in small numbers throughout the area. Flock counts on Tarn Moss were 50 7th March, 120 13th March, 250 20th March, c200 2nd April, 60 5th June, 200 9th June and 100 13th July. Many of these birds fly onto Tarn Moss from an easterly direction.
- 43 **Whimbrel** *Numenius phaeopus* Just two records, three East Bay 25th April and one over Tarn Moss 28th April flying west.
- 44 **Woodcock** *Scolopax rusticola* Up to four birds on Tarn Moss in period 12th January to 25th March. No breeding season records as usual. In late autumn singles 4th and 10th November with at least six on 28th November.
- 45 **Snipe** *Gallinago gallinago* A few sightings of single wintering birds usually on Tarn Moss. The bulk of the breeding population arriving back late February/early March. Drumming birds were present near Rainscar, Fountains Fell, Thoragill, Tarn Moss, Malham Lings, Great Close Pools and Tarn Outflow.
- 46 **Black-headed Gull** *Larus ridibundus* No change in status, present throughout year in variable numbers, 100 on 1st September typical.
- 47 **Common Gull** *Larus canus* Present near Tarn January to 29th April, with four immatures 15th May and one 14th June. Six adults returned 2nd August then increasingly common to years end.
- 48 **Lesser Black-backed Gull** *Larus fuscus* A few sightings during the winter months, mostly in February. Highest counts are in March/April and August/September, maximum count in year sixty on 15th August.
- 49 **Herring Gull** *Larus argentatus* Just three records of this Tarn rarity, single birds on 29th March, 29th April and 7th September.
- 50 **Yellow-legged Gull** *Larus cachinnans* One adult south shore of Tarn 15th April, the fourth record for the area.
- 51 **Great Black-backed Gull** *Larus marinus* Up to eight birds January to 23rd March. One returned on 7th September with a flock of thirty on 27th November.
- 52 **Black Tern** *Chelidonias niger* One feeding over Tarn on 30th August for a few hours the only record.
- 53 **Feral Pigeon** *Columba livia* A few resident birds present at Thoragill and Darnbrook, probably no more than twenty birds in total.
- 54 **Stock Pigeon** *Columba oenas* Only a few records but at least the species probably still breeds in the area. One on a barn top Westside House and two at Silverdale Barn on 15th April, one at Henside 21st May and two Globe Flower Wood 3rd July.
- 55 **Wood Pigeon** *Columba palumbus* Two returned to Tarn Woods on 9th February, ten singing birds by 10th April. Probably bred at Darnbrook, a single bird here on 13th June. A complete beechmast failure ensured that after 12th September no more birds were seen to year end.
- 56 **Cuckoo** *Cuculus canorus* Probably now only a passage bird through area with only single birds on Tarn Moss 29th April and down Pot Hole Lane 3rd May.
- 57 **Tawny Owl** *Strix aluco* Three calling in Tarn Woods 5th February and one at Darnbrook 19th February. The small rodent population at the beginning of the year was very low so the birds that did attempt to breed almost certainly failed as no young were ever seen.
- 58 **Long-eared Owl** *Asio otus* All records come from Tarn Fen where probably bred, single birds on 4th June, 10th June, 3rd October and 20th November. A dead bird was found near the boardwalk below Sandhill Cottage on 1st November.

Lesser Black-backed Gull



- 59 **Short-eared Owl** *Asio flammeus* One pair attempted to breed near Darnbrook, nest with eggs found here 24th June. Recorded 3rd February to 25th August.
- 60 **Little Owl** *Athene noctua* Most sightings during the year came from Great Close Scar with other records from Thoragill, Henside and Tennant Ghyll. This species is under recorded and the population is probably much higher than realised.
- 61 **Swift** *Apus apus* Recorded 29th April to 21st July, mainly feeding over the Tarn, typically 100+ on 14th June.
- 62 **Kingfisher** *Alcedo atthis* A single bird at the Tarn from 14th September to 4th November.
- 63 **Green Woodpecker** *Picus viridis* An excellent year for this species. Two birds set up territories one on Highfolds and one at Ha Mire Wood, probably unmated males which called incessantly throughout. Last heard on 22nd May. No records from this date to 5th August, one birds seen from this latter date till the end of the year. Unlikely to have bred but may do so in the near future.
- 64 **Great Spotted Woodpecker** *Dendrocopos major* One or two pairs bred in Tarn Woods, though no nests were located two juveniles on 26th June provided proof of at least one pair being successful.
- 65 **Sky Lark** *Alauda arvensis* First sightings were at Darnbrook and Malham Lings 9th February, two were singing on lower slopes of Fountains Fell near Rainscar on 23rd May. Last record was a juvenile on Malham Lings 23rd June – a very early last sighting.
- 66 **Sand Martin** *Riparia riparia* Recorded 14th April to 1st September. At least six pairs attempted to breed on Tarn Moss peat bank with juveniles seen here on 3rd July.
- 67 **Swallow** *Hirundo rustica* First sighting was near Dalehead on 15th April and the last at Waterhouses 12th September – an earlier last date than usual. Bred Waterhouses and Low Trenhouse with a low success rate. Maximum count only c50 on 30th August.
- 68 **House Martin** *Delichon urbica* Recorded 19th April to 3rd October, fewer pairs than last year. Bred Tarn House, Low Trenhouse, Tennant Ghyll and Waterhouses. Counts were low with no more than ten birds at any time.
- 69 **Meadow Pipit** *Anthus pratensis* First arrival, one on Tarn Moss 18th February where a few pairs later bred, 25 on Tarn House Meadow 6th April in a cold spell. Bred commonly throughout Malham Lings, Fountains Fell, Ha Mire etc. Only post breeding season flocks of any note were thirty on 1st and 9th September. Last record 1st November near Capon Hall.
- 70 **Tree Pipit** *Anthus trivialis* The only record was of three birds at Waterhouses on 5th August.
- 71 **Pied Wagtail** *Motacilla alba* One at Low Trenhouse 1st January was an unusual winter record. Arrival back began early March when one at Thoragill on 7th and one near Tarn on 13th, widespread by mid April. One pair noted feeding young near Capon Hall 6th June. Last recorded on 5th October.
- 72 **Yellow Wagtail** *Motacilla flava* First seen near Capon Hall on 25th April and the last a juvenile near Tarn 23rd July. Only one pair between Low Trenhouse and Tarn Outflow – normally three here. Two pairs near Tennant Ghyll, if this decline continues the species will soon become extinct as a breeding bird in the area.
- 73 **Grey Wagtail** *Motacilla cinerea* Just the usual one or two single passage birds during March/April. One near bird hide 22nd May and 28th June was highly unusual. Only two records of single birds in September at Low Trenhouse on the 1st and near Capon Hall on the 5th probably reflecting a poor breeding season.



Great Spotted Woodpecker

- 74 **Wren** *Troglodytes troglodytes* The usual one or two birds present on Tarn Fen, six had arrived back on 9th February, increasingly common thereafter. Many family parties were seen in early July. Area vacated by end of October apart from the very small wintering population.
- 75 **Duncock** *Prunella modularis* Bred High and Low Trenhouse, Waterhouses, near Sandhill Cottage and near Tarn House and probably one or two pairs at other sites such as Tennant Ghyll, Darnbrook and Dalehead where one bird on 9th September.
- 76 **Robin** *Erithacus rubecula* At least five pairs on Tarn Estate, one pair breeding in the stone cutting leading to Tarn House, probably also bred at High and Low Trenhouse. First juveniles seen on 21st June. No obvious autumn influx this year.
- 77 **Redstart** *Phoenicurus phoenicurus* First of year was singing behind Tarn House on 23rd April. Four pairs were located, at Tarn House, near Bird Hide, Pot Hole Lane and near East Gate. A few juveniles appeared mid-June onwards so at least a few pairs bred successfully. Last seen 8th August.
- 78 **Wheatear** *Oenanthe oenanthe* First back was a male on 29th March. A snowfall on 12th April forced many birds onto the roadside. Typically twenty-eight between Sannat Hall and Rainscar and eleven between Henside and Malham Tarn. At least five pairs near Round Wood. Nest building here 29th April and first juveniles 14th June. Last seen on 4th October.
- 79 **Stonechat** *Saxicola torquata* On spring passage single birds 17th March near Henside and Ha Mire 22nd March, one at Henside 27th July possibly a local bred bird. In autumn one near Capon Hall 6th October, two Great Close Mire 24th October and singles Great Close Scar 30th October and 16th November and finally one near Globe Flower Wood 19th December.
- 80 **Song Thrush** *Turdus philomelos* One on 27th January at Waterhouses was a very early first record. No more sightings till two in song 13th February, up to five singing birds in March on Tarn Estate with one at High Trenhouse and one Darnbrook. A single 6th October on Tarn Fen was the last of the year.
- 81 **Redwing** *Turdus iliacus* Present on Tarn Estate January to 27th March and 3rd October to 16th November, with no Yew berries birds did not linger. Peak count only fifty on 22nd October.
- 82 **Mistle Thrush** *Turdus viscivorus* Two or three pairs bred on Tarn Estate based at Sandhill, near Tarn House and Waterhouses. Seen feeding young but no juveniles seen at any time. Two noteworthy flocks were fifteen near Henside 3rd July and ten 7th September on Chapel Fell.
- 83 **Fieldfare** *Turdus pilaris* Present January to 22nd April and 17th October to December. Peak counts were 200 5th April and 100 21st October. Smaller numbers than usual in autumn due to lack of berries, no Yew, Rowan and only a few hawthorns down Pot Hole Lane.
- 84 **Blackbird** *Turdus merula* Recorded throughout the year, bred Tarn Estate, at least four pairs, peak count on spring passage was sixteen 7th March with no obvious influx in autumn.
- 85 **Ring Ouzel** *Turdus torquatus* The only records in year were all in spring, two near Dalehead 15th April and one Great Close Scar, where formerly bred, 23rd to 25th April.
- 86 **Garden Warbler** *Sylvia borin* First of year was a singing bird on Tarn Fen below Sandhill Cottage – a favoured annual site on 13th May. Last heard 5th June, when three in song, also on Tarn Fen, no proof of breeding but probably did so.
- 87 **Blackcap** *Sylvia atricapilla* Recorded 25th April to 13th July in Tarn Woods with a maximum of six singing birds on 14th June. No signs of any successful breeding in a particularly wet and windy summer.
- 88 **Sedge Warbler** *Acrocephalus schoenobaenus* Very little was seen of this species in 2008 mainly due to the poor weather. All records came from Tarn Fen in period 3rd May to 23rd July, one possibly two pairs.
- 89 **Grasshopper Warbler** *Locustella naevia* One in song Ha Mire Wood 26th April is first record since 23rd August 2001, one also in song Tarn Fen 30th June and 1st July.

- 90 **Willow Warbler** *Phylloscopus trochilus* The first record was one on Tarn Fen 2nd April, equalling the earliest ever record, with fifteen singing birds on Tarn Estate by 26th April. One pair bred successfully in the stone cutting leading to Tarn House in spite of frequent disturbance by vehicles, hikers etc. Last recorded 7th September.
- 91 **Chiffchaff** *Phylloscopus collybita* Up to six passage birds in song 31st March to 26th April but few records in late summer. Last seen on 28th September.
- 92 **Goldcrest** *Regulus regulus* Very few records this year, two near Bird Hide 13th February the first of year. One pair probably bred in Tarn House yews where a pair seen 14th April and 28th June. Two Pot Hole Lane 12th September and two Tarn Woods 12th October the final sightings.
- 93 **Spotted Flycatcher** *Muscicapa striata* One on 13th May was the first arrival. Two or three pairs on Tarn Estate, one east of Tarn House, one near Sandhill Cottage and one Pot Hole Lane, appeared to have a good breeding season with quite a few juveniles seen in late summer. Final record was on 6th September.
- 94 **Great Tit** *Parus major* Bred fairly commonly on Tarn Estate readily seizing upon recently erected nest-boxes. Maximum count in year was only eight on 9th January.
- 95 **Blue Tit** *Parus caeruleus* Far commoner than previous species, maximum count twenty on 25th October. One pair bred in a power line pole near High Stables rearing at least five young.
- 96 **Coal Tit** *Parus ater* Four pairs at least bred on Tarn Estate, one of these pairs being in Spiggot Copse and another in the stone cutting leading to Tarn House where two juveniles seen on 21st June.
- 97 **Long-tailed Tit** *Aegithalos caudatus* The birds which arrived 13th October 2007 were last seen on Tarn Fen 29th January. No more records then till the appearance of the usual autumn flock, eight arrived on 21st October and these were seen till year end.
- 98 **Nuthatch** *Sitta europaea* Probably up to six pairs bred this year. One pair breeding successfully in a nest-box near the Bird Hide which had only been erected in March but not before going through the usual ritual of plastering round the nest-box hole. Another pair probably also bred in another of the nest-boxes. A frequent visitor to the bird feeders at Keepers Cottage and Waterhouses.
- 99 **Treecreeper** *Certhia familiaris* Probably three pairs Tarn Estate, on Pot Hole Lane, West Fen and near Bird Hide. No broods were seen this year and just a very few winter records.
- 100 **Maggie** *Pica pica* One, possibly two pairs on Tarn Estate, a pair near Capon Hall and one probably near Darnbrook. Maximum count in year six on Tarn Fen 4th February.
- 101 **Jackdaw** *Corvus monedula* Still increasing, bred Great Close Scar (where eighteen birds on 29th April), Thoragill, Tarn Woods, Tarn House, near Kiln House and in a barn near Tennant Ghyll where young seen in July.
- 102 **Rook** *Corvus frugilegus* A few pairs bred at Low Trenhouse but as usual the highest numbers were in Spiggot Copse on Tarn Moss, 110 nests counted here on 19th March.
- 103 **Carrion Crow** *Corvus corone* At least four pairs bred on Tarn Estate, one pair on Tarn Fen raising two young. Thirty at High Trenhouse on 17th October is an example of how common the species is in the area.



Blue Tit



Nuthatch

- 104 **Raven** *Corvus corax* One pair bred successfully in area raising three young, another pair took up residence on Highfolds but did not breed. Sightings were regular throughout the year, usually ones and twos but with five on 5th June and 12th September.

- 105 **Starling** *Sturnus vulgaris* Recorded all months, bred Tarn Estate, one pair breeding successfully in an old tree stump on West Fen. Some notable flocks in early months when 1000+ at Waterhouse 9th February and 400 West Fen 28th February.

- 106 **Chaffinch** *Fringilla coelebs* Fifteen on 1st January was a high winter count. By 28th February there were twenty singing birds in Tarn Woods. A cold spell saw fifty at Keepers Cottage bird feeders on 20th March. Bred commonly on Tarn Estate. Notable flocks in late summer were fifty on Chapel Fell 8th August and forty at Pot Hole Lane 7th September. Small numbers present to year end.



Chaffinch

- 107 **Brambling** *Fringilla montifringilla* Up to ten birds in Tarn Woods in January with a single male at the bird feeders February to 15th April. Few records in autumn due to the complete absence of any beech mast, only four 7th November and six 18th November.

- 108 **Linnet** *Carduelis cannabina* One bird back at Low Trenhouse on 29th April where two pairs subsequently bred. Probably also bred at High Trenhouse and in the conifer plantation near Capon Hall. Elsewhere a pair near Rough Close 30th June suggestive of breeding nearby. Autumn flocks were lower than normal due no doubt to the awful summer weather, only ten 3rd July and last record for year 25 on 10th September.

- 109 **Twite** *Carduelis flavirostris* Three pairs were located by Richard Humpage above Darnbrook whilst doing a BTO tetrad, this was the only record in the year. The species is still hanging on but only in a fraction of its former numbers.

- 110 **Lesser Redpoll** *Carduelis flammea* First of the year was a male near Sandhill Cottage 15th April. One or two pairs bred on Tarn Fen apparently successfully as a flock of ten down nearby Pot Hole Lane 10th July contained a few juveniles. Last record was a single bird in Globe Flower Wood 10th September.

- 111 **Goldfinch** *Carduelis carduelis* Present throughout the year albeit in small numbers during the winter months. Maximums 16 on 8th February at Waterhouses and six at Thoragill Plantation 19th February. A few pairs bred on Tarn Estate, one or two near Tarn House, one pair also at High Trenhouse. Flocks in late summer were few and contained smaller numbers than normal, probably reflecting a poor breeding season. Most notable were twenty on 25th August at Ha Mire Wood and fifty at Globe Flower Wood on 12th September.

- 112 **Greenfinch** *Carduelis chloris* Recorded in area 1st January to 27th November, peak count in year was only eight on 10th January. Appeared to be three pairs on Tarn Estate, in yews near Tarn House, near Keepers Cottage and down Pot Hole Lane. First juvenile was seen down Pot Hole Lane on 3rd July. No obvious passage in autumn this year, just one or two birds at the feeders.



Greenfinch

- 113 **Siskin** *Carduelis spinus* All records were on spring passage in early part of year and all at the bird-feeders at Waterhouses and Keepers Cottage with one on 8th February, four 9th February, two 13th February, two 7th March and finally two on 8th April.

- 114 **Bullfinch** *Pyrrhula pyrrhula* A single bird on the fen 17th October with two on 30th October

- 115 **Reed Bunting** *Emberiza schoeniclus* Two or three birds on Tarn Fen January /February presumably wintering birds. Arrival back of breeding birds began in March, two in song on Tarn Fen on 20th, where later two pairs. Single pairs also at Tarn Outflow, possibly Ha Mire Wood and at Low Trenhouse. A male, West Fen 6th October, was last of year.

**First and last dates of main
summer and winter visitors**

Species	First Seen	Last Seen
Wheatear	29 th March	4 th October
Chiffchaff	31 st March	28 th September
Willow Warbler	2 nd April	7 th September
Sand Martin	14 th April	1 st September
Ring Ouzel	15 th April	No autumn records
Swallow	15 th April	12 th September
House Martin	19 th April	3 rd October
Common Sandpiper	22 nd April	29 th June
Redstart	23 rd April	8 th August
Blackcap	25 th April	13 th July
Yellow Wagtail	25 th April	23 rd July
Swift	29 th April	21 st July
Sedge Warbler	3 rd May	23 rd July
Garden Warbler	13 th May	5 th June
Spotted Flycatcher	13 th May	6 th September
Redwing	3 rd October	27 th March
Fieldfare	17 th October	22 nd April



Black-headed Gull

Butterflies

- 1 **Small Skipper** *Thymelicus sylvestris* All records as follows: three Streetgate 18th July, two Highfolds 25th July, two roadside verge Chapel Fell 13th August and finally one Tarn Fen 22nd August.

- 2 **Large Skipper** *Ochlodes venata* Just three singletons on 3rd July in Keepers Cottage garden, roadside verge Chapel Fell 13th July and on Fen 26th July

Brimstone *Gonepteryx rhamni* **No records in 2008**

- 3 **Large White** *Pieris brassicae* One Highfolds 8th June and one Tarn Fen 11th June were the only records.

- 4 **Small White** *Pieris rapae* One High Stables 5th June, two Tarn Fen 23rd August and one 8th September Tarn House Meadow.

- 5 **Green-veined White** *Pieris napi* Most records came from the stronghold of the species, Tarn Fen, but in lower numbers than usual, maximum count of first brood, twenty on 5th June, and second brood no more than eight away from this site. Three Thoragill 1st July and four Great Close Scar 5th August, recorded flight period 12th May to 23rd August.

- 6 **Orange-tip** *Anthocharis cardamines* Just managed to get on the year list with a solitary male Tarn Fen 12th May.

- 7 **Green Hairstreak** *Callophrys rubi* Recorded on Tarn Fen 12th May to 9th June, peak count ten on 20th May. The Darnbrook and Tarn Moss colonies were not visited.

Small Copper *Lycaena phlaeas* **No records in 2008**

- 8 **Northern Brown Argus** *Aricia artaxerxes* A second successive bad year for this species, only record a single on Highfolds 4th July.

- 9 **Common Blue** *Polyommatus icarus* Flight period was from 16th June to 15th August, numbers holding up well in spite of the awful summer, recorded from the following sites: Highfolds, Great Close Scar, Tarn House Meadow, roadside verge Chapel Fell, Streetgate, Tarn Fen and Ha Mire Wood. Peak counts were twenty Highfolds 4th July, twenty six roadside verge Chapel Fell 23rd July and sixteen Great Close Scar 31st July.

Holly Blue *Celastrina argiolus* **No records in 2008**

- 10 **Red Admiral** *Vanessa atalanta* An exceptionally poor showing, all records as follows: single 23rd August, 10th September and 13th August with ten on 18th September all on Tarn Estate and further singles at Shepherd's Cottage on 19th and 20th September.

Painted Lady *Vanessa cardui* **No records in 2008**

- 11 **Small Tortoiseshell** *Aglais urticae* Another species which had a bad year, just two on 23rd August, 8th September, 10th September and 18th September on Tarn Estate.

- 12 **Peacock** *Inachis io* Probably lowest numbers ever with no spring records and in late summer only two 22nd August, six 23rd August, eight 8th September, six 10th September and finally 15 18th September.

Large Skipper



Green Hairstreak



Small Tortoiseshell



Other Records

In a period of changing climate it is important that we try and record as much of our changing wildlife as possible. To help visitors to the area around Malham Tarn we have obtained a copy of Recorder 6. This is a piece of biological recording software, created to enable people who conduct field surveys to record their observations efficiently in an electronic format that is ready for widespread exchange. In this, and future, Wildlife Reports we will publish a selection of new and interesting records of various groups of plants, animals and other organisms collected by Field Centre staff, visiting course tutors and local naturalists.

Hoverflies

1. *Episyrphus balteatus* **Marmalade Hoverfly** 28th July Keepers Cottage (SD887673) on French Cranesbill; 17th August Tarn Fen (SD883671) on Devil's-bit Scabious; 4th September Keepers Cottage (SD887673)
2. *Eristalis pertainax* 17th August Tarn Fen (SD883671) on Devil's-bit Scabious; 20th August Keepers Cottage (SD887673); 4th September Keepers Cottage (SD887673)
3. *Eristalis tenax* 28th September Keepers Cottage (SD887673)
4. *Helophilus pendulus* 9th June Keepers Cottage (SD887673); 17th August Tarn Fen (SD883671); 18th September Keepers Cottage (SD887673)
5. *Leucozona lucorum* 3rd August Tarn Fen (SD888671)
6. *Melanaostoma scalare* 31st July Keepers Cottage (SD887673); 17th August Keepers Cottage (SD887673)
7. *Platycyrtus albimanus* 17th September Keepers Cottage (SD887673)
8. *Rhingia campestris* 20th August Keepers Cottage (SD887673); 24th August Keepers Cottage (SD887673)
9. *Sericomyia silentis* 9th June Keepers Cottage (SD887673); 11th June Tarn Fen (SD883671); 20th July Tarn Fen (SD888672); 17th August Keepers Cottage (SD887673); 21st August Tarn Fen (SD883671) on Devil's-bit Scabious; 24th August Tarn Fen (SD883671)
10. *Syrphus ribesii* 24th July Tarn Fen (SD882670) on Meadowsweet; 25th July Tarn Fen (SD882670) on Meadowsweet

Moths

1. *Agrotis ipsilon* **Dark Sword-grass** 18th September attracted to outside light at Keepers Cottage (SD887673). This is a migratory moth that occasionally turns up in this country, more especially in the south.

Bees

1. *Bombus monticola* **Billberry Humble-bee** 13th August feeding on Devil's Bit Scabious on Tarn Fen (SD883671). This species is restricted to the north and west of the country. It is strongly associated with Bilberry (*Vaccinium myrtillus*) and is in decline in most parts of its range.

Photographs (from top) *Episyrphus balteatus* **Marmalade Hoverfly**, *Helophilus pendulus*, *Rhingia campestris*, *Sericomyia silentis*, *Agrotis ipsilon* **Dark Sword-grass**, *Bombus monticola* **Billberry Humble-bee**



Fungi

1. *Agaricus urinascens* **Macro Mushroom** 26th September Malham Lings (SD901658) in Grassland
2. *Amanita fulva* **Tawny Grisette** 17th August Tarn Fen (SD886671) under Birch
3. *Armillaria mellea* **Honey Fungus** 17th September between Bird Hide and Sandhill (SD891672) on Sycamore Log
4. *Ascocoryne cylichnium* **Jellydisc** 22nd December Tarn Woods (SD895672) on fallen Beech
5. *Ascocoryne sarcodes* **Purple Jellydisc** 16th October Tarn Woods (SD892671) on Beech; 22nd December Tarn Woods (SD892671) on Beech log
6. *Auricularia auricula-judae* **Jelly Ear** 21st October Tarn Woods (SD892671) on Beech; 22nd November Tarn Woods (SD892671) on Beech
7. *Bisporella citrina* **Lemon Disco** 16th October Tarn Woods (SD892671) on Deciduous Log
8. *Bjerkandera adusta* **Smoky Bracket** 4th January Woods above Pot Hole Lane (SD882672) on cut Beech and on cut Sycamore stump
9. *Calocera pallidospathulata* **Pale Stagshorn** 11th August Tarn Woods (SD892671) on Beech log
10. *Calocera viscosa* **Yellow Stagshorn** 11th August Tarn Woods (SD892671) on Conifer log; 12th November Tarn Woods (SD892671) on Conifer log; 15th November Tarn Woods (SD892671) on fallen Larch
11. *Chondrostereum purpureum* **Silverleaf Fungus** 28th November Tarn Woods (SD892671) on Beech
12. *Claviceps purpurea* **Ergot** 3rd October Tarn Fen (SD884670) on Molinea
13. *Clavulinopsis fusiformis* **Golden Spindles** 12th October Malham Lings nr Tarn Outflow (SD895662) in CG9/U6Grassland
14. *Collybia confluens* **Clustered Toughshank** 12th October Tarn Woods (SD892671) under Beech
15. *Coprinus disseminatus* **Trooping Crumble Cap** 17th October nr Waterhouses (SD886672) on Sycamore
16. *Coprinus micaceus* **Glistening Inkcap** 16th October Tarn Woods (SD892671) on Beech/Sycamore
17. *Crepidotus cesatii* **Oysterling** 10th November Tarn Woods (SD892671) on dead Sycamore branch
18. *Cystoderma amianthinum* **Earthy Powdercap** 16th September nr Gordale Beck (SD906656) in CG9/U6Grassland
19. *Dacrymyces stillatus* **Common Jelly Spot** 25th January by West Boathouse (SD891671) on cut Scots Pine and woods above East Boathouse (SD897671) on deer damaged Spruce
20. *Daedalea quercina* **Oak Maze Gill** 5th April nr Tarn House (SD894672) on Oak stump
21. *Daedaleopsis confragosa* **Blushing Bracket** 21st November Tarn Fen (SD886672) on Alder
22. *Diatrypella faucae* 16th February between Winskill and Stainforth (SD882667) on Hazel
23. *Enteridium lycoperdon* **Caca de Luna** 30th June nr High Stables (SD892673) on Sycamore / Beech? log
24. *Entoloma serulatum* **Blue Edge Pinkgill** 17th August Behind Keepers Cottage (SD887674) in Calcareous Grassland
25. *Exidia thurettiana* **White Brain** 15th November Tarn Woods (SD892671) on Ash stump
26. *Flammulina velutipes* **Velvet Shank** 10th November Tarn Woods (SD892671) on Ash stump
27. *Fuligo septica* **Slimemould** 22nd July Tarn Fen (SD887671) on Moss under Birch; 25th July Tarn Woods (SD892671) on Moss covered log; 13th August Tarn Woods (SD892673) on Moss covered log
28. *Ganoderma australe* **Southern Bracket** 11th August Tarn Woods (SD892671) on Beech
29. *Gloeophyllum sepiarium* **Conifer Mazegill** 25th January by West Boathouse (SD891671) on cut Scots Pine
30. *Gymnopilus sapineus* **Scaly Rustgill** 15th November Tarn Woods (SD892671) on Coniferous log
31. *Hydnum repandum* **Hedgehog Fungus** 23rd September Tarn Woods (SD892671) under Beech
32. *Hygrocybe coccinea* **Scarlet Waxcap** 22nd November nr Gordale Beck (SD906656) in Calcareous Grassland
33. *Hypholoma fasciculare* **Sulphur Tuft** 11th October between Boathouse and Bird Hide (SD891671) on Deciduous Log
34. *Hypoxylon fragiforme* **Beech Woundwart** 11th October between Boathouse and Bird Hide (SD891671) on Beech log
35. *Hypoxylon fuscum* **Hazel Woundwart** 16th February between Winskill and Stainforth (SD882667) on Hazel
36. *Inonotus radiatus* **Alder Bracket** 21st November Tarn Fen (SD886672) on Alder
37. *Ischnoderma benzoinum* **Benzoin Bracket** 22nd November Tarn Woods (SD892671) on fallen Larch
38. *Ischnoderma resinosum* **Resinous Bracket** 22nd December Tarn Woods (SD895672) on fallen Beech
39. *Ischnomeromyces mutabilis* **Sheathed Woodtuft** 12th November Tarn Woods (SD892671) on Deciduous Log
40. *Laccaria amethystina* **Amethyst Deceiver** 16th October Tarn Woods (SD892671) under Beech; 1st December Pot Hole Lane (SD885673) under Hawthorn
41. *Lactarius blennius* **Beech Milkcap** 7th September Tarn Woods (SD892671) under Beech
42. *Lactarius tabidus* **Birch Milkcap** 14th September Tarn Fen (SD887671) in Sphagnum under Birch
43. *Lactiporus sulphureus* **Sulphur Polypore** 11th June between Bird Hide and Sandhill (SD891672) on Larch
44. *Leotia lubrica* **Jellybabies** 7th September Tarn Woods (SD892671) under Beech
45. *Lycogala terrestre* **Wolfs Blood** 25th September Tarn Fen (SD885671) on Deciduous stump; 11th October Tarn Woods (SD892671) on Beech log; 21st



Flammulina velutipes



Leotia lubrica

- October Tarn Woods (SD892671) on Beech log
46. *Lycoperdon nigrescens* **Dusky Puffball** 26th September Malham Lings (SD901659) in Grassland
 47. *Lycoperdon perlatum* **Common Puffball** 7th September Tarn Woods (SD892671) moss under Deciduous trees; 23rd September Tarn Woods (SD892671) under Beech; 22nd November Tarn Woods (SD892671) under Beech
 48. *Lycoperdon pyriforme* **Stump Puffball** 4th January Woods above Pot Hole Lane (SD882672) on Deciduous stump
 49. *Mucilago crustacea* **Dog's Vomit** 16th September nr Gordale Beck (SD907656) in Grassland
 50. *Mycena arcangeliana* **Angel's Bonnet** 22nd October Tarn Woods (SD893672) on Beech
 51. *Mycena haematopus* **Burgundydrop Bonnet** 13th August Tarn Woods (SD892672) on Beech; 16th October Tarn Woods (SD892672) on Deciduous Log
 52. *Mycena rosea* **Rosy Bonnet** 12th October Tarn Woods (SD892672) under Beech
 53. *Nectria cinnabarina* **Coral Spot** 13th August Tarn Woods (SD892673) on Beech log; 22nd November Tarn Woods (SD892672) on Beech log
 54. *Neobulgaria pura* **Beech Jellydisc** 21st October Tarn Woods (SD892672) on Beech; 22nd December Tarn Woods (SD892672) on Beech log
 55. *Neobulgaria pura* var *foliacea* **Beech Jellydisc** 22nd December Tarn Woods (SD892672) on Beech log
 56. *Oudemansia mucida* **Porcelain Fungus** 26th September Tarn Woods (SD893672) on Beech
 57. *Oxyporus populinus* **Poplar Bracket** 10th November Tarn Woods (SD892672) on Sycamore; 15th November Tarn Woods (SD892672) on Sycamore
 58. *Panaeolus papilionaceus* **Petticoat Mottlegill** 30th August Malham Lings (SD900659) on Cow Dung
 59. *Panaeolus serotinus* **Olive Oysterling** 15th November Tarn Woods (SD892671) on Rowan/Prunus debris; 24th November below Tarn House (SD895671) on Cherry
 60. *Panaeolus semiovatus* **Egghead Mottlegill** 19th July nr Gordale Beck (SD907656) on Cow Dung
 61. *Phlebia radiata* **Wrinkled Crust** 21st November Woods above Pot Hole Lane (SD882672) on Sycamore stump
 62. *Pholiotia squarrosa* **Shaggy Scalycap** 25th September Pot Hole Lane (SD885673) on Beech
 63. *Piptoporus betulinus* **Birch Polypore** 1st December Tarn Fen (SD887671) on Birch
 64. *Pleurotus ostreatus* **Oyster Mushroom** 18th November Woods Pot Hole Lane (SD893674) on Deciduous stump; 27th November Tarn Woods (SD892671) on Sycamore; 28th November Tarn Woods (SD892671) on Sycamore; 22nd December Tarn Woods (SD892671) on Sycamore
 65. *Polyporus squamosus* **Dryad's Saddle** 30th June nr High Stables (SD892673) on Sycamore
 66. *Postia subcaesia* **Blueing Bracket** 22nd November Tarn Woods (SD892671) on Beech
 67. *Psathyrella hirta* 30th August Malham Lings (SD901658) on Cow Dung
 68. *Psilocybe coprophila* 30th August Malham Lings (SD901658) on Cow Dung
 69. *Puccinia urticae* **Nettle Rust** 6th July Keepers Cottage (SD887673) on Nettles
 70. *Russula nitida* **Purple Swamp Brittlegill** 14th September Tarn Fen (SD887671) in Sphagnum under Birch
 71. *Scutellinia scutellata* **Common Eyelash** 15th November Tarn Woods (SD892671) on soil under Ash/Sycamore
 72. *Scutellinia trechispora* **Eyelash Fungus** 10th November Tarn Woods (SD892671) on soil under Ash/Sycamore
 73. *Stereum hirsutum* **Hairy Curtain Crust** 17th January Tarn Fen (SD887671) on Birch; 10th August Tarn Woods (SD892671) on Deciduous stump
 74. *Stereum rugosum* **Bleeding Broadleaf Crust** 27th November Tarn Woods (SD892671) on Beech
 75. *Stereum sanguinolentum* **Bleeding Conifer Crust** 25th January by West Boathouse (SD891671) on cut Scots Pine
 76. *Stropharia semiglobata* **Dung Roundhead** 16th September nr Gordale Beck (SD908655) on Cow Dung
 77. *Tarzetta catinus* 11th August Tarn Woods (SD892671) under Beech
 78. *Trametes ochracea* 13th April Tarn Fen (SD886671) on dead Birch
 79. *Trametes versicolor* **Turkeytail** 13th August Tarn Woods (SD892671) on Deciduous stump; 27th November Tarn Woods (SD892671) on Ash stump
 80. *Tremella foliacea* **Leafy Brain Fungus** 25th September Tarn Fen (SD888671) on Willow
 81. *Tremella mesenterica* **Yellow Brain** 16th October Tarn Woods (SD892671) on Deciduous Log; 21st October Tarn Woods (SD892671) on Deciduous log; 24th November by West Boathouse (SD891671) on fallen Ash branches
 82. *Tubaria furfuracea* **Scurfy Twiglet** 25th January Pot Hole Lane (SD885673) on dead Hawthorn branch
 83. *Tubifera ferruginosa* **Slimemould** 16th October Tarn Woods (SD892671) on Deciduous stump
 84. *Xylaria hypoxylon* **Candlesnuff** 11th August Tarn Woods (SD892671) on dead Beech; 23rd September Tarn Woods (SD892671) on Deciduous log; 15th November Tarn Woods (SD892671) on dead Beech branch; 22nd November Tarn Woods (SD892671) on dead wood under Beech
 85. *Xylaria longipes* **Dead Moll's Fingers** 22nd October Tarn Woods (SD892671) on dead wood under Ash/Beech

Mycena rosea



Psathyrella hirta



Xylaria longipes

Comma *Polygonia c-album* **No records in 2008**

- 13 **Dark Green Fritillary** *Argynnis aglaja* Numbers well down on last few years, recorded 4th July to 23rd August from the following localities: Highfolds, Thoragill, Darnbrook, roadside verge Chapel Fell, Ha mire Wood, Great Close Scar and Tarn Fen with no more than five at any time.

Gatekeeper *Pyronia tithonus* **No records in 2008**

Speckled Wood

- 14 **Speckled Wood** *Pararge aegeria* Like four other species just managed to get on the list with a single insect at Keepers Cottage on 28th September.
- 15 **Wall** *Lasiommata megera* One Great Close Scar 5th June was only second ever record for Tarn area.
- 16 **Meadow Brown** *Maniola jurtina* Recorded 21st July to 23rd August from the following localities: Highfolds, roadside verge Chapel Fell, Tarn House Meadow, Great Close Scar, Tarn Fen and Ha Mire Wood. Peak counts were twelve Ha Mire Wood 31st July and twenty-two Great Close Scar 5th August.



- 17 **Ringlet** *Aphantopus hyperantus* This species seems to do well in wet weather so quite a decent emergence in period 4th July to 31st July from Highfolds, Thoragill, Ha Mire Wood, Waterhouses and the roadside verge below Chapel Fell. Peak counts, nineteen Thoragill and fourteen Waterhouses on 25th July with fourteen Ha Mire Wood 31st July.
- 18 **Small Heath** *Coenonympha pamphilus* Recorded 5th June to 5th August from Great Close Scar, Streetgate, roadside verge Chapel Fell, Ha Mire, Highfolds, Malham Lings, Tarn House Meadow and Pennine Way to rear of Keepers Cottage, peak counts were from Great Close Scar where fourteen 4th July and twenty-two 27th July with smaller numbers from the other sites.



Small Heath

Dragonflies & Damselflies

- 1 **Banded Demoiselle** *Calopteryx splendens* A male near Sandhill Cottage 16th August seen by Robin Sutton is first record for Tarn area and an astonishing one at this altitude though well established on the River Ribble on lower ground.
- 2 **Emerald Damselfly** *Lestes sponsa* Only two records of single insects on Tarn Fen 27th July and 23rd August
- 3 **Large Red Damselfly** *Pyrrosoma nymphula* Recorded 12th May to 25th July from Tarn Fen in small numbers, peak count six on 16th July.
- 4 **Azure Damselfly** *Coenagrion puella* Like all insects suffered badly in a dreadful summer which was probably worse than last year. The only records, four 1st July, one 25th July and two 27th July on Tarn Fen.
- 5 **Common Blue Damselfly** *Enallagma cyathigerum* On the boardwalk below Sandhill Cottage, six on 8th June, one 1st July and two 19th July.



Common Blue Damselfly

Blue-tailed Damselfly *Ischnura elegans* **No records in 2008**

- 6 **Common Hawker** *Aeshna juncea* An exceptionally poor emergence with only singles on 25th July, 23rd August and 10th September.
- 7 **Southern Hawker** *Aeshna cyanea* The only record a single near Tarn House 15th August.

Golden-ringed Dragonfly *Cordulegaster boltonii* **No records in 2008**

Four-spotted Chaser *Libellula quadrimaculata* **No records in 2008**

Broad-bodied Chaser *Libellula depressa* **No records in 2008**

- 8 **Common Darter** *Sympetrum striolatum* Little was seen of this species only, three 23rd August, one 13th September and four 28th September all on Tarn Fen.
- 9 **Black Darter** *Sympetrum danae* Even numbers of this common species were low, only one 15th August, six 23rd August, two 8th September, four 10th September and six 28th September all on Tarn Fen.



Black Darter



Common Darter

Weather Report – Winter to early Spring

Overall the first part of the year was very mixed, January was warm and very wet with little sunshine. February stayed warm but with a roughly average amount of rain, slightly more sunshine and fewer frosts than normal. March had roughly average temperatures but was wetter than usual and April was pretty much as we'd expect with almost average amounts of sun, rain and frosts and near to normal temperatures. In fact the temperatures remained pretty close to average for the whole of the rest of the year.

January – a very wet month, it rained almost every day from the 1st to the 24th of the month. On the 10th January we had 46.8mm of rain and by the end of the month 320.8mm – the highest ever January rainfall recorded since we started taking weather readings in 1959. After five days with no rain (25th – 29th) the last couple of days were also wet. We had a little snow on the 3rd and 4th but temperatures were generally well above average with few frosts. The warmest day was the 19th at 10.7°C but like most of the month it was also distinctly damp with 18.6mm of rain. The other feature of the month was the almost total lack of any sunshine, in the whole month we only totalled 9.5 hours of sunshine and the maximum amount of sun on a single day was a meagre 2.3 hours on the 25th. In summary a very dull, grey and damp month to start the year.

January 2008 Summary		Mean for period 1961 -1990
Warmest Day (19th Jan)	10.7 °C	
Average Maximum	6.6 °C	3.6 °C
Coldest Day (3rd & 4th Jan)	-2.5 °C	
Average Minimum	1.5 °C	-0.9 °C
Days with Air Frost	7 days	18 days
Wettest Day (10th Jan)	46.8 mm	
Total Rain for Month	320.8 mm	154 mm
Days with > 1mm Rain	24 days	18 days
Sunniest Day (25th Jan)	2.3 hours	
Total Sunshine	9.5 hours	35.3 hours

September 2008 Summary	Mean for period 1961-1990
Warmest Day (22nd Sept)	17.9 °C
Average Maximum	14.3 °C
Coldest Day (16th Sept)	3.9 °C
Average Minimum	8.2 °C
Days with Air Frost	0 days
Wettest Day (6th Sept)	35.5 mm
Total Rain for Month	134.4 mm
Days with > 1mm Rain	17 days
Sunniest Day (28th Sept)	8.6 hours
Total Sunshine	72.2 days

October 2008 Summary	Mean for period 1961-1990
Warmest Day (13th Oct)	14.8 °C
Average Maximum	10.3 °C
Coldest Day (29th Oct)	-2.8 °C
Average Minimum	4.6 °C
Days with Air Frost	4 days
Wettest Day (5th Oct)	37.6 mm
Total Rain for Month	234.5 mm
Days with > 1mm Rain	20 days
Sunniest Day (9th Oct)	6.5 hours
Total Sunshine	68.9 hours

November 2008 Summary	Mean for period 1961-1990
Warmest Day (15th Nov)	11.3 °C
Average Maximum	7.4 °C
Coldest Day (22nd Nov)	-3.6 °C
Average Minimum	2.7 °C
Days with Air Frost	6 days
Wettest Day (10th Nov)	27.3 mm
Total Rain for Month	122.1 mm
Days with > 1mm Rain	14 days
Sunniest Day (4th Nov)	6.5 hours
Total Sunshine	52.8 hours

December 2008 Summary	Mean for period 1961-1990
Warmest Day (22nd Dec)	9.0 °C
Average Maximum	4.4 °C
Coldest Day (31st Dec)	-7.2 °C
Average Minimum	-0.7 °C
Days with Air Frost	19 days
Wettest Day (19th Dec)	24.2 mm
Total Rain for Month	88.9 mm
Days with > 1mm Rain	15 days
Sunniest Day (10/11th Dec)	6.5 hours
Total Sunshine	43.1 hours

Autumn/early Winter – September started as August finished - grey and wet. Things picked up a little in the latter half of the month only to be followed by another wet month (October). November was much better; drier and slightly warmer on average with near normal levels of sunshine. Temperatures dropped towards the end of the month heralding a very cold fortnight at the beginning of December.

September – had near average rainfall though the vast majority of this fell in the first half of the month – 124mm of the monthly total of 134mm falling between the 1st and 15th of the month. The second half of the month gave the first settled spell of weather since early June.

October – yet another of the very wet months in 2008. It turned out to be the fifth wettest October with 234.5mm although this was well below the 328.9mm of October 2000. The rain was spread fairly evenly throughout the month. Levels of sunshine were correspondingly lower than average though temperatures held up better and came in at about the long-term average for the month.

November – started with a relatively dry week with reasonable sunshine levels. Most of the rain 96mm of the months total of 122mm fell in the period 8th to 15th November and that was followed by another spell of relatively dry weather with temperatures up to a mild 11.3°C on the 15th. The last ten days or so saw temperatures dropping well down. Air and ground frosts were recorded on most days from the 22nd until the end of the month.

December – started where November had left off, the cold weather continuing until the 16th of the month. The lowest air temperature was -7.4°C on the 31st whilst the grass minimum got down to -13.2°C on the 4th. Heavy snow fell on the 2nd and particularly on the 4th leading to even depths of 30cm in sheltered areas and deeper drifts in more exposed areas. The snow cover persisted for the first fortnight and only finally melted after heavy rain on the 17th and 18th when night-time temperatures finally rose above zero. Things then stayed reasonably mild until Boxing Day when a further cold spell took us through to the end of the year. The month was drier, colder and slightly sunnier than average.

May 2008 Summary	Mean for period 1961 -1990	
Warmest Day (12th May)	22.2 °C	
Average Maximum	14.9 °C	12.3 °C
Coldest Day (20th May)	1.3 °C	
Average Minimum	6.9 °C	4.6 °C
Days with Air Frost	0 days	1.2 days
Wettest Day (5th May)	7.9 mm	
Total Rain for Month	29.9 mm	92.3 mm
Days with > 1mm Rain	5 days	13.5 days
Sunniest Day (14th & 15th May)	13.0 hours	
Total Sunshine	146.1 hours	163.4 hours

June 2008 Summary	Mean for period 1961 -1990	
Warmest Day (9th June)	19.1 °C	
Average Maximum	14.8 °C	15.1 °C
Coldest Day (23rd June)	3.7 °C	
Average Minimum	7.9 °C	7.6 °C
Days with Air Frost	0 days	0.10 days
Wettest Day (19th June)	31.8 mm	
Total Rain for Month	127.0 mm	93.7 mm
Days with > 1mm Rain	18days	13.1
Sunniest Day (9th June)	12.8 hours	
Total Sunshine	112.0 hours	151.5 hours

July 2008 Summary	Mean for period 1961 -1990	
Warmest Day (28th July)	22.7 °C	
Average Maximum	16.7 °C	16.5 °C
Coldest Day (21st July)	4.8 °C	
Average Minimum	10.5 °C	9.2 °C
Days with Air Frost	0 days	0 days
Wettest Day (10th July)	35.4 mm	
Total Rain for Month	198.1 mm	100.3 mm
Days with > 1mm Rain	17 days	13 days
Sunniest Day (28th July)	10.9 hours	
Total Sunshine	86.1 hours	136.4 hours

August 2008 Summary	Mean for period 1961 -1990	
Warmest Day (1st August)	19.3 °C	
Average Maximum	16.0 °C	16.1 °C
Coldest Day (18th August)	2.1 °C	
Average Minimum	10.5 °C	9.3 °C
Days with Air Frost	0 days	0 days
Wettest Day (1st August)	35.8 mm	
Total Rain for Month	259.4 mm	130.8 mm
Days with > 1mm Rain	23 days	14.7 days
Sunniest Day (25th August)	6.5 hours	
Total Sunshine	62.6 hours	142.6 hours

May – This turned out to be by far the best month of the summer. There was very little rain, the total of 29.9mm was the sixth driest ever for May it was also the fourth warmest May with an average maximum of 14.9°C being beaten only by 1992 and 1998 at 15.1°C and 1959 at 15.4°C. Disappointingly the amount of sunshine didn't match those with a total of 146.1 hours being well down on the 163.4 hours recorded on average. The warmest day of the month was the 12th when a maximum of 22.2°C was recorded, this in fact was only bettered by two days in the whole year, in July with temperatures of 22.6°C and 22.7°C.

June – the dry weather of May extended into the beginning of June. By the 17th we had only had a further 22mm and we were beginning to get concerned about our water supply. We needn't have worried, the remaining two weeks gave us another 105mm, topped up our water supply and set the scene for a wet July and August. Temperatures for the month were close to the long-term averages but sunshine hours were well below average and rain well above average.

July – followed a similar pattern to the latter half of June with temperatures close to the long-term norm but with appreciably more rain and less sunshine than average. July was the third wettest July ever after 2007 with 207.4mm and 1988 with 214.1mm. In terms of sunshine it was the second lowest total ever after 1993 with 81 hours.

August – the pattern was very similar to the latter half of June and into July. Temperatures were close to the long-term averages but rainfall was high and sunshine hours low. Total rainfall for the month was 259.4mm which has only ever been exceeded once in August (260.1mm fell in August 1985). Almost miraculously though in did stay dry for Malham Show day on the 23rd. The total hours of sun was the lowest ever recorded for August with only 62.6 hours, this was over 20 hours less than the previous lowest August value of 83.3 hours in 1985.

Combining June, July and August we had the highest ever rainfall (584.5mm) and lowest ever hours of sun (260.7 hours) ever recorded for those three months, 2008 will go down as probably the worst ever summer at Malham Tarn since we started recording weather data in 1959.

February – like January a warm month with a maximum of 15.3°C on the 13th and temperatures generally well above average. The exceptions being the first four days and again around the 15th – 18th when temperatures were around the average we might expect in February. The coldest day fell in this later period when the minimum screen temperature went down to -6.2°C and there was a heavy ground frost with the grass minimum down to -11.2°C. There were in fact eighteen days of ground frost, mostly in the middle of the month when we had a succession of clear bright days with no rain and very little cloud cover. Total rainfall was just below average at 90.5mm.

February 2008 Summary	Mean for period 1961 -1990	
Warmest Day (13th Feb)	15.3 °C	
Average Maximum	7.5 °C	3.4 °C
Coldest Day (17th Feb)	-6.2 °C	
Average Minimum	0.2 °C	-1.1 °C
Days with Air Frost	11 days	17.3 days
Wettest Day (21st Feb)	16.3 mm	
Total Rain for Month	90.5 mm	103.6 mm
Days with > 1mm Rain	11 days	13 days
Sunniest Day (11th Feb)	8.7 hours	
Total Sunshine	89.5 hours	58.5 hours

March – a return to wet weather with rain being recorded on all but ten days of the month. Total rainfall was 201.6mm, well above average and the fourth wettest ever March but still well behind March 1981 when we had 320.5mm. The only dry period was from the 15th – 19th but these days were also largely cloudy with no real sunshine. Most other days had a little sunshine to go with the rain so the total hours of sunshine for the month was just slightly above average. There were eleven days of air frost and nineteen of ground frosts. The minimum temperature recorded was on the 25th March with the minimum screen temperature down to -4.7°C and the grass minimum down to -8.1°C. These are still a long way off March 2001 which goes down as having the coldest day we have ever recorded when the screen temperature reached -13.5°C and the grass minimum went down to -20.1°C. All in all this was a not unusual March picture, close to average temperatures after February's warmth (the maximum of 8.8°C being well down on February's 15.3°C) with some sunshine but with rather more rainfall in the form of heavy, showery outbursts of rain.

March 2008 Summary	Mean for period 1961 -1990	
Warmest Day (1st Mar)	8.8 °C	
Average Maximum	6.2 °C	5.7 °C
Coldest Day (25th Mar)	-4.7 °C	
Average Minimum	0.7 °C	0 °C
Days with Air Frost	11 days	15.2 days
Wettest Day (1st Mar)	27.2 mm	
Total Rain for Month	201.6 mm	125.6 mm
Days with > 1mm Rain	21 days	15.8 days
Sunniest Day (31st Mar)	8.8 hours	
Total Sunshine	93.1 hours	85.3 hours

April 2008 Summary	Mean for period 1961 -1990	
Warmest Day (27th Apr)	13.9 °C	
Average Maximum	8.8 °C	8.7 °C
Coldest Day (6th Apr)	-4.9 °C	
Average Minimum	2.0 °C	1.8 °C
Days with Air Frost	9 days	7.3 days
Wettest Day (12th Apr)	14.6 mm	
Total Rain for Month	72.2 mm	90.5 mm
Days with > 1mm Rain	18 days	13.3 days
Sunniest Day (4th Apr)	9.3 hours	
Total Sunshine	92.3 hours	120.3 hours

April – a contrast to April 2007 which had been one of the nicer months of a poor year. April 2008 was a typical month of sunshine and showers. Temperatures were very close to average but there was slightly less rainfall and less sunshine than we might expect. There were slightly above average days of air frost (9 days) and 14 days of ground frosts – mostly in the middle of the month. Most days had some rain but amounts were generally small with only two days having more than 5mm (6.8mm on the 1st and 14.6mm on the 12th). Most days also had a little sunshine – only three days (26th, 28th & 29th) had no sun recorded at all.

Summer – After a warm start to the year March and April had been fairly typical months, perhaps slightly less warm than we have been used to in recent years but close to the long-term 1961-1990 averages. Moving into the summer we were looking forward to something rather better this year after a poor summer last year. Things started well with a fine May. This however turned out to be the driest and sunniest month of the whole year and the rest of the summer months settled into a dreary damp routine with only a very few bright sunny periods to cheer us up.

Records

Temperature

Warmest Day
Coldest Day
Warmest Month
Coldest Month
Lowest Grass Temperature
Lowest 10cm Temperature

Rainfall

Wettest Day
Wettest Month
Driest Month
Total Rainfall for Year

Sunshine

Sunniest Day
Sunniest Month
Least Sunny Month

2008		
Date	Amount	
28th July	22.7 °C	
31st December	-7.2 °C	
July	16.7 °C	
December	-0.7 °C	
4th December	-13.2 °C	
18th/19th Feb.	-0.2 °C	
10th January	46.8 mm (1.8 in)	
January	320.8 mm (12.6 in)	
May	29.9 mm (1.20 in)	
	1898.4 mm (74.7 in)	
14th/15th May	13.0 hours	
May	146.1 hours	
January	9.5 hours	

Ever (1959 - 2006)		
Date	Amount	
3rd Aug. 1990	28.2 °C	
5th Mar. 2001	-13.5 °C	
Jul. 2006	21.9 °C	
Feb. 1986	-5.6 °C	
5th Mar. 2001	-20.1 °C	
14th Dec. 1999	-7.1 °C	
31st Jan. 2002	135.4 mm (5.3 in)	
Feb. 2002	364.1 mm (14.3 in)	
Jan/Feb 1979	No Rain	
2000	2097.9 mm (82.6 in)	
7th May 1985	15.7 hours	
Jul. 2006	257.5 hours	
Jan. 1997	No Sun	

Notes

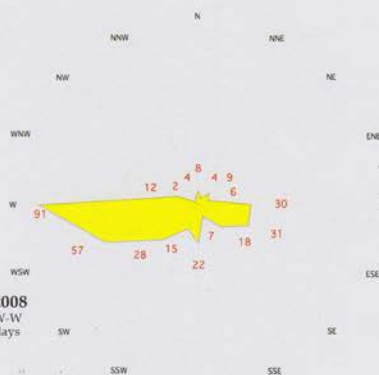
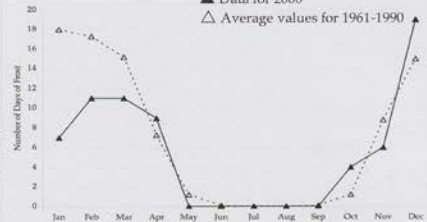
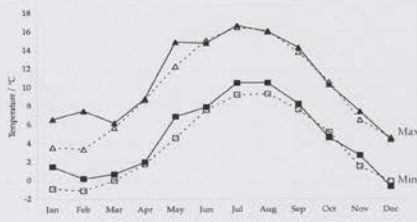
Highest air temperature recorded
Lowest air temperature recorded
Highest Average Maximum readings
Lowest Average Minimum readings

2008 was the 2nd wettest year since our records began in 1959

2008 in Graphs

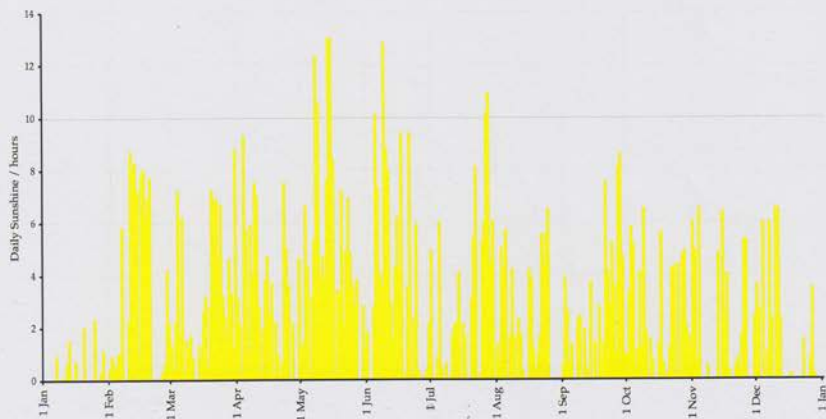
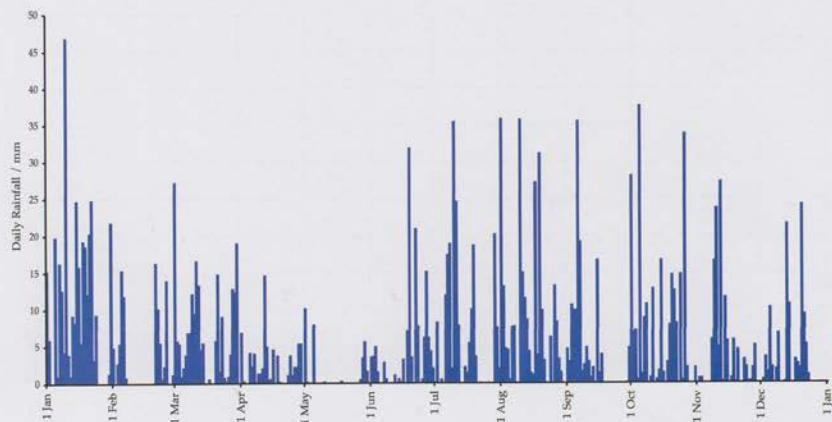
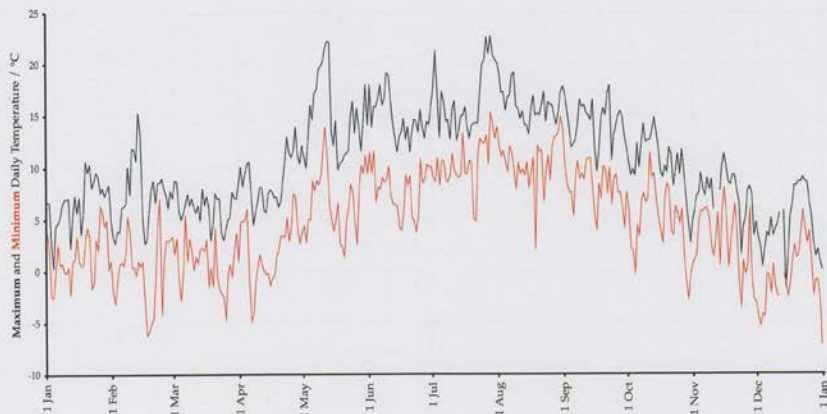
▲ Data for 2008

△ Average values for 1961-1990



Wind Rose for 2008

Winds come from a SW-W direction on c50% of days



Want to know more?

Malham Tarn Field Centre

Malham Tarn Field Centre is one of 17 centres run by the Field Studies Council – the leading provider of environmental education in the country. It has been helping students of ecology, heritage and landscape explore the environment around the Tarn since 1947. Visitors to the Centre cover the whole range from pre-school day visits to retired adults on leisure learning courses.

Our Leisure Learning Courses run throughout the year and are led by expert tutors. If you want to find out more about the area around Malham Tarn then why not book on one of our courses? To contact the Centre: Phone 01729 830331 or write to us at: **Malham Tarn Field Centre, Settle, North Yorkshire, BD24 9PU**. More details about our courses are also on our website www.field-studies-council.org.

Malham Tarn Estate and National Nature Reserve

Malham Tarn and much of the neighbouring farmland is owned and managed by the National Trust. There are a series of way-marked walks which provide the best way to appreciate the wildlife, landscape and history of this outstanding area of upland limestone country. The walks start and finish at the car park. Please follow the way-marked routes and keep dogs on a lead at all times. The National Trust run an annual series of walks on and around the Malham Tarn Estate, for further details ring 01729 830416, or email malhamtarn@nationaltrust.org.uk

Malham Tarn is an unusual lime-rich upland lake, set amid a variety of habitats with a range of nationally-scarce species. To the west of the Tarn is an area of fen and raised bog, while the surrounding grassland has areas of limestone pavement and a rich flora. The woodland around Tarn House is also of conservation importance. The Tarn and its associated wetlands and woodlands form a 136.5 hectare National Nature Reserve, declared by English Nature in 1992. The reserve is part of the much larger Malham –Arndcliffe Site of Special Scientific Interest (SSSI) – one of the most extensive areas of limestone scenery in England. The area's importance in an international context is recognised by its designation as a RAMSAR site and as a Special Area of Conservation (SEC). The National Trust manages the reserve in partnership with English Nature and the Field Studies Council.



FSC
BRINGING
ENVIRONMENTAL
UNDERSTANDING TO ALL

Malham Tarn Field Centre
Settle, North Yorkshire. BD24 9PU
Tel: 01729 830331 Fax: 01729 830658
Email: enquiries.mt@field-studies-council.org
Web site: www.field-studies-council.org


**THE
NATIONAL
TRUST**